

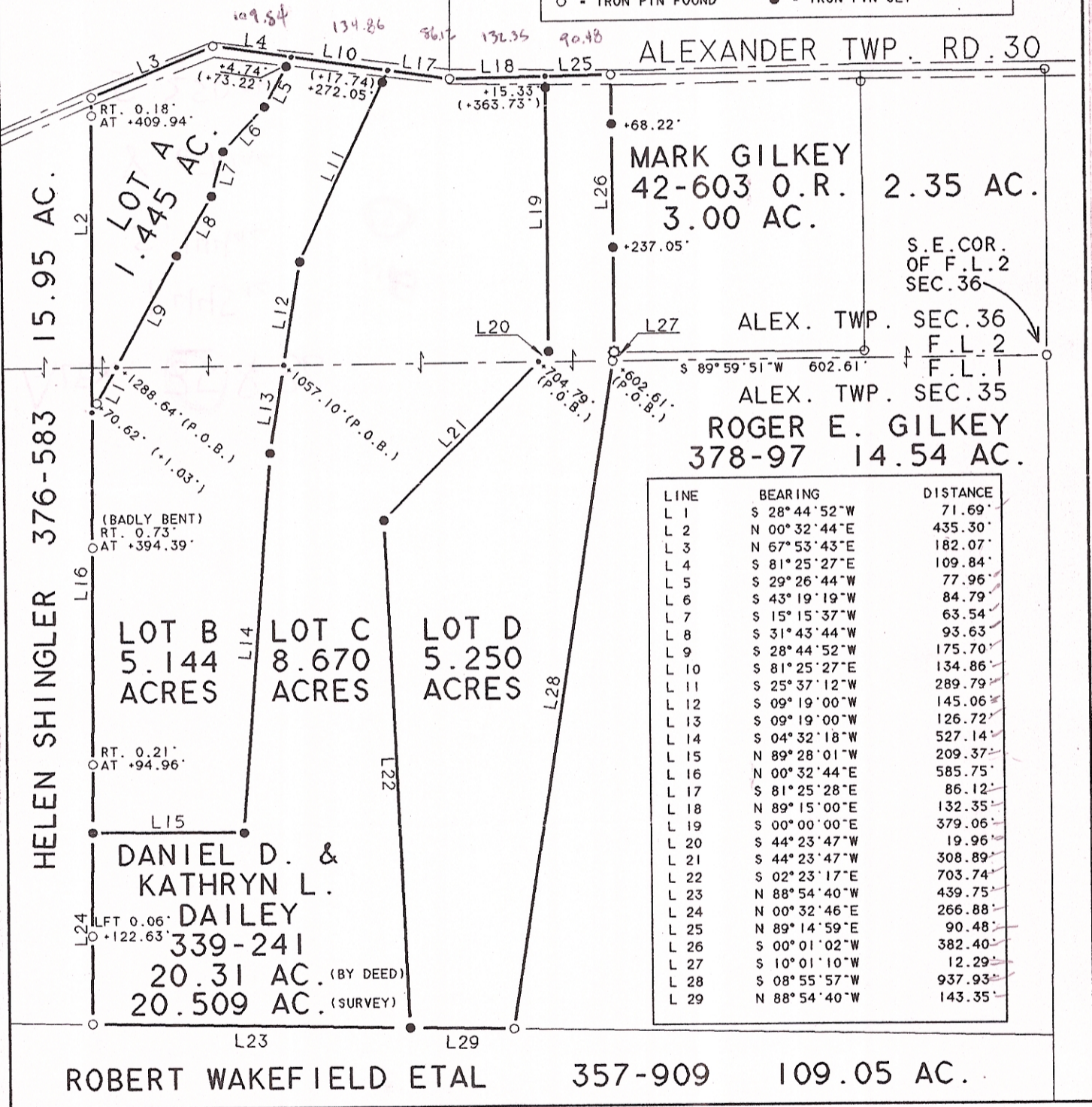
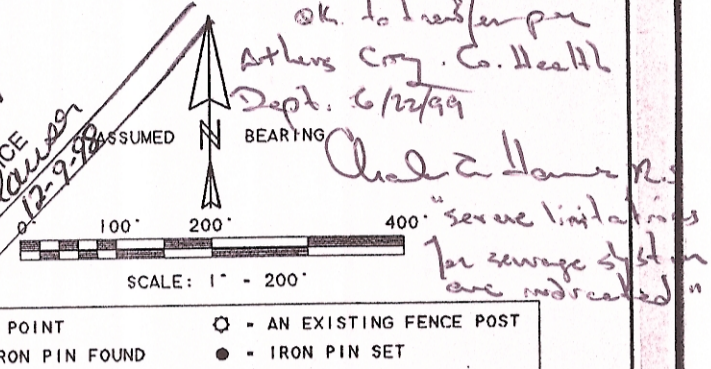
# SOUTHEASTERN LAND SURVEYS

LEONARD F. SWOYER  
REGISTERED PROFESSIONAL LAND SURVEYOR

3428 Pleasant Hill Road  
Athens, Ohio 45701  
614/593-8701

SUB-ACREAGE TABLE:	SECTION 35 FARM LOT 1	SECTION 36 FARM LOT 2	TOTAL
LOT A	0.025 AC.	1.420 AC.	1.445 AC
LOT B	3.452 AC.	1.692 AC.	5.144 AC
LOT C	5.876 AC.	2.794 AC.	8.670 AC
LOT D	4.430 AC.	0.820 AC.	5.250 AC
TOTALS FOR V339-PG241	13.783 AC.	6.726 AC.	20.509 AC.

Description checked for  
Mathematical Accuracy  
ATHENS COUNTY  
ENGINEERS OFFICE  
By: *S. Blawie*  
DATE: *12-9-98*



LINE	BEARING	DISTANCE
L 1	S 28° 44' 52" W	71.69'
L 2	N 00° 32' 44" E	435.30'
L 3	N 67° 53' 43" E	182.07'
L 4	S 81° 25' 27" E	109.84'
L 5	S 29° 26' 44" W	77.96'
L 6	S 43° 19' 19" W	84.79'
L 7	S 15° 15' 37" W	63.54'
L 8	S 31° 43' 44" W	93.63'
L 9	S 28° 44' 52" W	175.70'
L 10	S 81° 25' 27" E	134.86'
L 11	S 25° 37' 12" W	289.79'
L 12	S 09° 19' 00" W	145.06'
L 13	S 09° 19' 00" W	126.72'
L 14	S 04° 32' 18" W	527.14'
L 15	N 89° 28' 01" W	209.37'
L 16	N 00° 32' 44" E	585.75'
L 17	S 81° 25' 28" E	86.12'
L 18	N 89° 15' 00" E	132.35'
L 19	S 00° 00' 00" E	379.06'
L 20	S 44° 23' 47" W	19.96'
L 21	S 44° 23' 47" W	308.89'
L 22	S 02° 23' 17" E	703.74'
L 23	N 88° 54' 40" W	439.75'
L 24	N 00° 32' 46" E	266.88'
L 25	N 89° 14' 59" E	90.48'
L 26	S 00° 01' 02" W	382.40'
L 27	S 10° 01' 10" W	12.29'
L 28	S 08° 55' 57" W	937.93'
L 29	N 88° 54' 40" W	143.35'

Plat of Survey of Lots A-D, inclusive Scale 1" = 200'

Surveyed for Daniel & Kathryn Dailey Date 11/21/98

Subdivision Farm Lots 1 & 2

Township Alexander Section 35 and 36 Town 8 Range 14

Corporation - County Athens State Ohio

*Leonard F. Swoyer Jr.*  
Leonard F. Swoyer Jr. Reg. Prof. Land Surveyor No. 6765