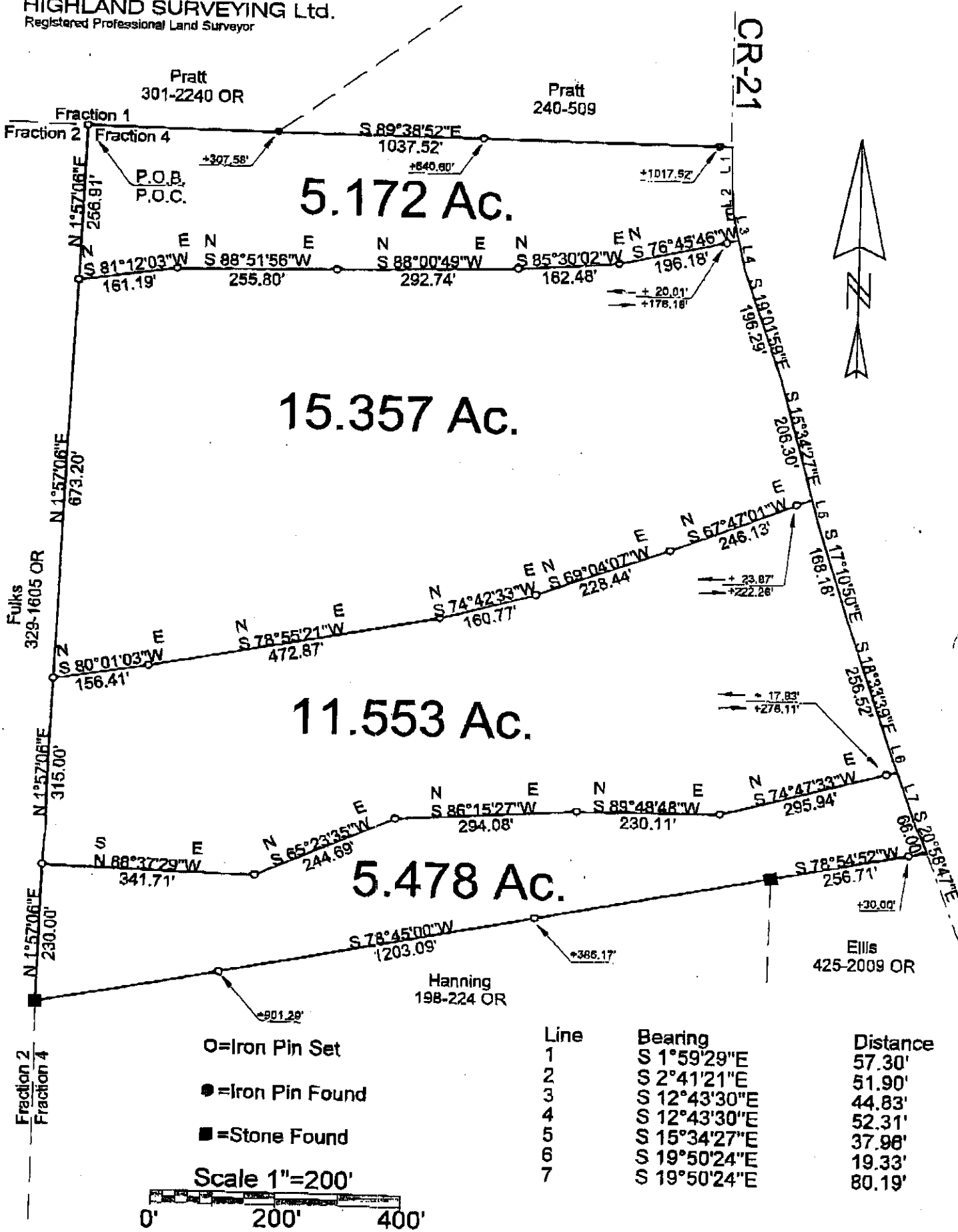


HIGHLAND SURVEYING Ltd.  
Registered Professional Land Surveyor



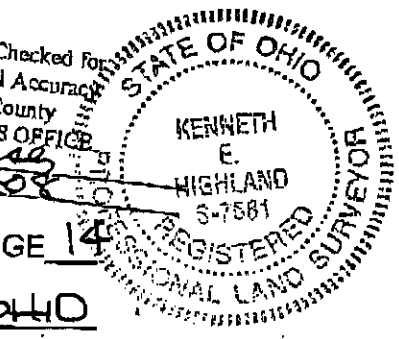
- O=Iron Pin Set
- =Iron Pin Found
- =Stone Found

Scale 1"=200'

Line	Bearing	Distance
1	S 1°59'29"E	57.30'
2	S 2°41'21"E	51.90'
3	S 12°43'30"E	44.83'
4	S 12°43'30"E	52.31'
5	S 15°34'27"E	37.96'
6	S 19°50'24"E	19.33'
7	S 19°50'24"E	80.19'

PLAT OF SURVEY OF 4 TRACTS  
 SURVEYED FOR RICK ELLIS  
 SUBDIVISION FRACTION 4  
 TOWNSHIP ALEXANDER SECTION 10 TOWN 8 RANGE 14  
 CORPORATION — COUNTY ATHENS STATE OHIO  
 SCALE 1"=200' DATE JULY 2008

Kenneth E. Highland  
 86 Fayette St.  
 Nelsonville, Ohio 45764  
 740-753-1254



Kenneth E. Highland S-7581