

# BRANNER SURVEYING

MEMBER-PROFESSIONAL LAND SURVEYORS OF OHIO

12500 N. PEACH RIDGE ROAD  
ATHENS, OHIO 45701

JOHN M. BRANNER  
Registered Land Surveyor

TELEPHONE  
(614) 592-5778

## DESCRIPTION OF A 0.64 ACRE TRACT

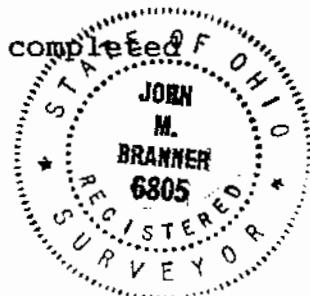
Situated in Section 13, T.8, R.14, Alexander Township, Athens County, Ohio and being part of a 31.02 acre tract of land as described in Volume 293 Page 220 of the Official Records of Athens County and being more particularly described as follows:

Commencing at the South-East corner of Section 13, thence,  
West, a distance of 89.10 feet to a point; thence,  
North, a distance of 384.45 feet to a point; thence,  
North 24 degrees 00 minutes 00 seconds West, a distance of 185.46 feet to a point said point being the POINT OF BEGINNING; thence,  
North 89 degrees 00 minutes 00 seconds West, a distance of 335.94 feet to a point; thence,  
North, a distance of 273.24 feet to a point in the intersection of Township road 1268 and County road 82; thence,  
with said Township road 1268, South 18 degrees 52 minutes 42 seconds East, a distance of 30.31 feet to a point; thence,  
South 17 degrees 40 minutes 27 seconds East, a distance of 48.32 feet to a point; thence,  
South 38 degrees 15 minutes 47 seconds East, a distance of 107.76 feet to a point; thence,  
South 49 degrees 43 minutes 40 seconds East, a distance of 50.15 feet to a point; thence,  
South 62 degrees 05 minutes 20 seconds East, a distance of 72.24 feet to a point; thence,  
South 69 degrees 20 minutes 09 seconds East, a distance of 105.93 feet to a point; thence,  
South 69 degrees 36 minutes 54 seconds East, a distance of 46.36 feet to the POINT OF BEGINNING and containing 0.64 acres.

Subject to all easements and rights of way of record.

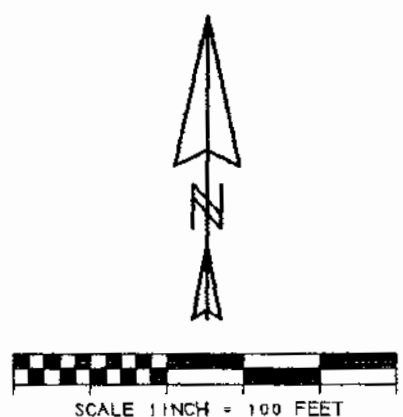
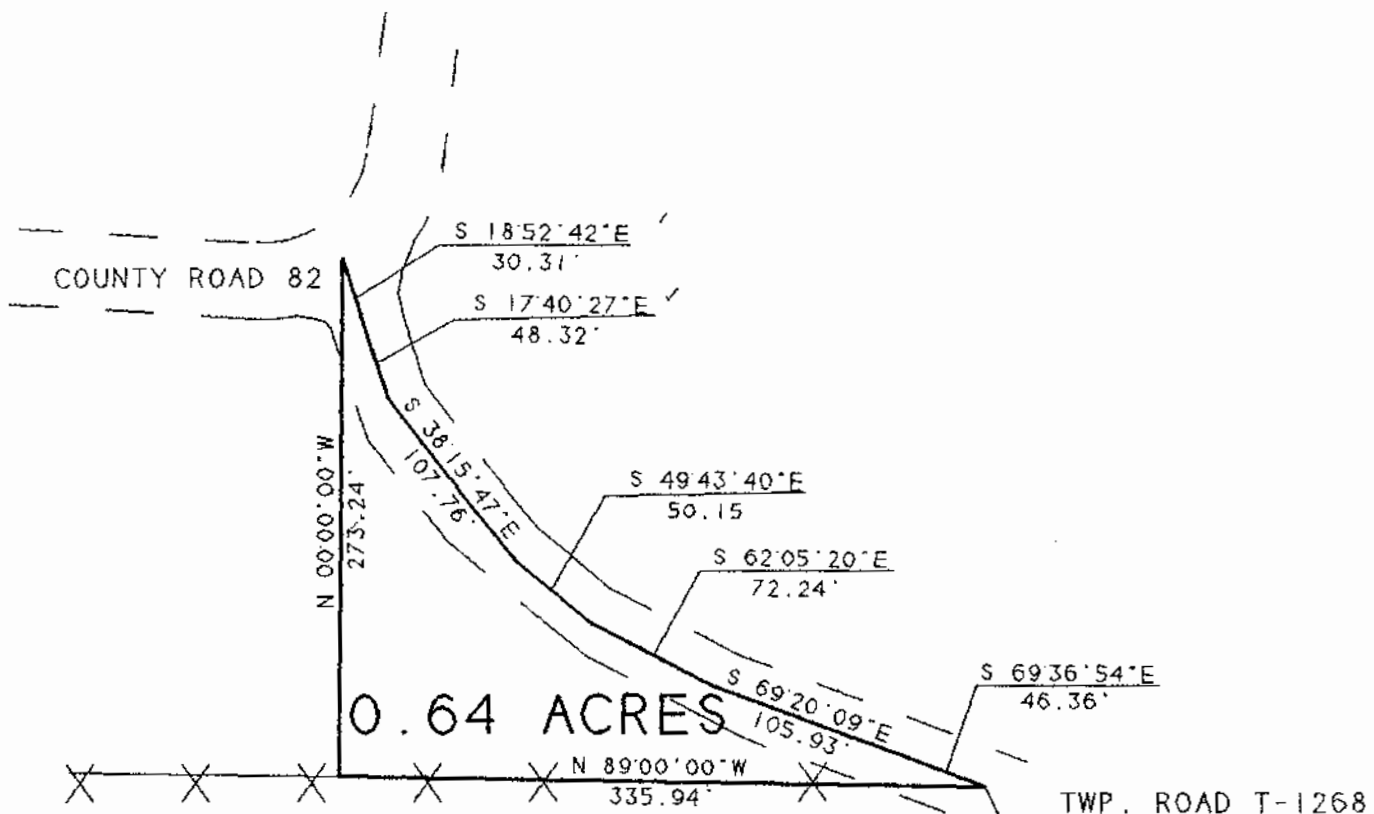
The above description is based on a field survey completed October 1996 by John M. Branner P.S. 6805

*John M. Branner*  
Description checked for  
Mathematical Accuracy  
ATHENS COUNTY  
SURVEYOR'S OFFICE  
BY *Donna M. Lee*  
DATE *10-11-96*



30

*Sec. # 13 Alex. Twp.*



BEARINGS SHOWN HEREON  
 ARE BASED ON A SURVEY OF AN  
 5.00 ACRE TRACT AND ARE USED  
 TO DENOTE ANGLES ONLY

SURVEY OF A 0.64 ACRE TRACT  
 SEC. 13, T. 8, R. 14, ALEXANDER TWP.  
 ATHENS COUNTY, OHIO  
 SURVEYED OCTOBER 1996

*John M. Branner*  
 JOHN M. BRANNER P. S. 6805  
 12500 N. PEACH RIDGE ROAD  
 ATHENS, OHIO 592-5778

N 90°00'00"W  
 89.10'  
 S.E. CORNER  
 OF SEC. #13

Description checked for  
 Mathematical Accuracy  
 ATHENS COUNTY  
 ENGINEER'S OFFICE  
*Donna McLean*  
 DATE 10-11-96



31

~~~~~  
 ACREAGE, CLOSURE, AND ERROR OF PLAT  
 ~~~~~

Line #							
1	South	18x	52°	42"	East	30.31 feet.	✓
2	South	17x	40°	27"	East	48.32 feet.	✓
3	South	38x	15°	47"	East	107.76 feet.	✓
4	South	49x	43°	40"	East	50.15 feet.	✓
5	South	62x	05°	20"	East	72.24 feet.	✓
6	South	69x	20°	09"	East	105.93 feet.	✓
7	South	69x	36°	54"	East	46.36 feet.	✓
8	North	00x	00°	00"	West	273.24 feet.	✓
9	North	89x	00°	00"	West	335.94 feet.	✓

The easting error is -0.01 feet.  
 The northing error is 0.01 feet.  
 The gap in closure is 0.01 feet.

The precision of the field survey is  
 0.11 feet error per 10,000 feet traverse.

The area computes to be -1.46 acres.