

EXHIBIT "A"

TRACT II:

Being a part of the tract of land that is now or formerly in the name of Joseph N. and Wanda M. Pare', et al., as recorded in Official Record 296 at page 1579, Athens County Recorder's Office, said tract being situated in Farm Lot 3 (Section 20), T8N, R14W, Alexander Township, Athens County, State of Ohio, and being more particularly described as follows:

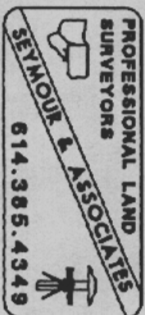
Beginning at an iron pipe found on the northwest corner of Farm Lot 3 (Section 20);

Thence along the north line of Farm Lot 3, and the grantor's north line, South 88 degrees 35 minutes 12 seconds East (South 88 degrees 37 minutes 20 seconds East Deed) passing through an iron pipe found at 1,859.68 feet, going a total distance of 1,879.68 feet (1,879.13 Deed) to a spike found in the center of Sandusky Road, Alexander Road 44 and the grantor's northeast corner;

Thence along the center of Alexander Township Road 44, South 17 degrees 10 minutes 11 seconds West (South 17 degrees 10 minutes 02 seconds West Deed) a distance of 295.08 feet to a point;

Thence leaving the center of Alexander Township Road 44, and along the along the center of a 30.00 foot wide common, private ingress-egress easement, the following eleven courses:

1. North 67 degrees 56 minutes 42 seconds West passing through a 5/8" X 30" iron pin with a plastic identification cap set at 3.70 feet, going a total distance of 124.08 feet to a 5/8" X 30" iron pin with a plastic identification cap set;
2. North 52 degrees 29 minutes 20 seconds West a distance of 60.15 feet to a 5/8" X 30" iron pin with a plastic identification cap set;
3. North 40 degrees 04 minutes 52 seconds West a distance of 61.54 feet to a 5/8" X 30" iron pin with a plastic identification cap set;
4. North 32 degrees 31 minutes 05 seconds West a distance of 88.32 feet to a 5/8" X 30" iron pin with a plastic identification cap set;
5. North 45 degrees 07 minutes 25 seconds West a distance of 32.54 feet to a 5/8" X 30" iron pin with a plastic identification cap set;
6. North 63 degrees 19 minutes 04 seconds West a distance of 42.03 feet to a 5/8" X 30" iron pin with a plastic identification cap set;
7. North 73 degrees 49 minutes 58 seconds West a distance of 63.48 feet to a 5/8" X 30" iron pin with a plastic identification cap set;
8. North 87 degrees 51 minutes 03 seconds West a distance of 54.04 feet to a 5/8" X 30" iron pin with a plastic identification cap set;
9. South 73 degrees 08 minutes 34 seconds West a distance of 32.10 feet to a 5/8" X 30" iron pin with a plastic identification cap set;
10. South 56 degrees 54 minutes 46 seconds West a distance of 47.05 feet to a 5/8" X 30" iron pin with a plastic identification cap set, and;
11. South 51 degrees 51 minutes 43 seconds West a distance of 31.89 feet to a 5/8" X 30" iron pin with a plastic identification cap set at the termination of said private 30.00 foot wide common, private ingress-egress easement;



114 x # 20

EXHIBIT "A"

Thence continuing with a new line through the grantor's land, the following three courses:

1. South 00 degrees 51 minutes 04 seconds East a distance of 254.47 feet to a 5/8" X 30" iron pin with a plastic identification cap set;
2. South 23 degrees 41 minutes 34 seconds West a distance of 311.76 feet to a 5/8" X 30" iron pin with a plastic identification cap set, and;
3. North 71 degrees 24 minutes 25 seconds West a distance of 1,222.35 feet to a 5/8" X 30" iron pin with a plastic identification cap set on the west line of Farm Lot 3, and the grantor's west line;

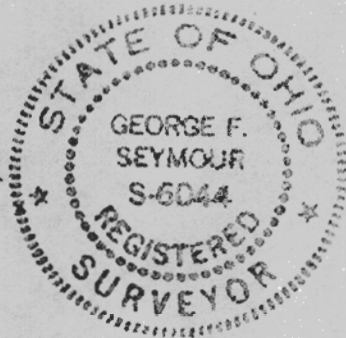
Thence along the west line of Farm Lot 3, North 01 degree 51 minutes 27 seconds East (North 01 degree 51 minutes 27 seconds East Deed) a distance of 267.00 feet to the point of beginning containing 15.058 acres, more or less, and subject to the right-of-way of Alexander Township Road 44, the 30.00 foot wide common, private ingress-egress easement as shown on the attached Exhibit "B" and all easements of record.

All 5/8" X 30" iron pins with plastic identification caps set are stamped "Seymour & Associates".

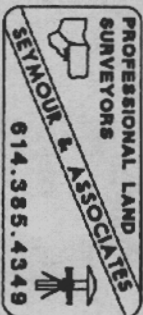
The bearings used in the above described tract were based on monumentation found on west line of Farm Lot 3 as bearing, North 01 degree 51 minutes 27 seconds East and are for the determination of angles only.

The above described tract was surveyed by George F. Seymour, Ohio Professional Surveyor No. 6044, in April of 2000.

George F. Seymour
George F. Seymour, P.S. 6044

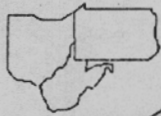


Description Checked for
Mathematical Accuracy
Athens County
ENGINEER'S OFFICE
BY: *S. Blawie*
DATE: 5-16-2000



000061

PROFESSIONAL LAND SURVEYORS



SEYMOUR & ASSOCIATES

P.O. Box 624
830 W. Hunter St. (740) 385-4349
Logan, Ohio 43138



PLAT OF SURVEY

OF 2 TRACTS SITUATE IN F.L. 3 -
(SECTION 20) - T. 8. N. - R. 14. W. -
ALEXANDER TWP. - ATHENS CO. -
STATE OF OHIO.



EXHIBIT "B"

DATE: 05.03.00

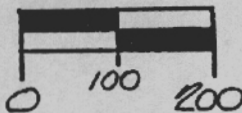
DRAWN BY: [Signature]

FOR: JOSEPH N. & WANDAM M. PARÉ & WILLIAM D. & CAROL CALHOUN

JOB #: ATOO12

SCALE:

1" = 200'



I HEREBY CERTIFY THAT AN ACTUAL SURVEY WAS MADE UNDER MY
DIRECT SUPERVISION OF THE PREMISES SHOWN HEREON ON
THE 3RD DAY OF MAY 2000, AND THAT THE PLAT IS A
CORRECT REPRESENTATION OF THE PREMISES AS DETER-
MINED BY SAID SURVEY. I FURTHER CERTIFY THAT THERE ARE
NO UNRECORDED EASEMENTS OR OTHER RIGHTS WHICH ARE
EXCEPT AS SHOWN HEREON.
George F. Seymour
PROFESSIONAL SURVEYOR No. 5-6044

LEGEND

- △ - 5/8" x 30" IRON PIPES SET W/ I.D. CAP STAMPED "SEYMOUR & ASSOC." (370/991)
- - IRON PIPE FOUND
- - SPIKE FOUND

NOTE:

BEARINGS DERIVED FROM PREVIOUS SURVEYS AND ARE FOR SETTING. MEASUREMENT OF ANGLES ONLY ARE BASED ON THE WEST LINE OF F.L. 3 (SECTION 20) AS BEARING: N01°51'27"E

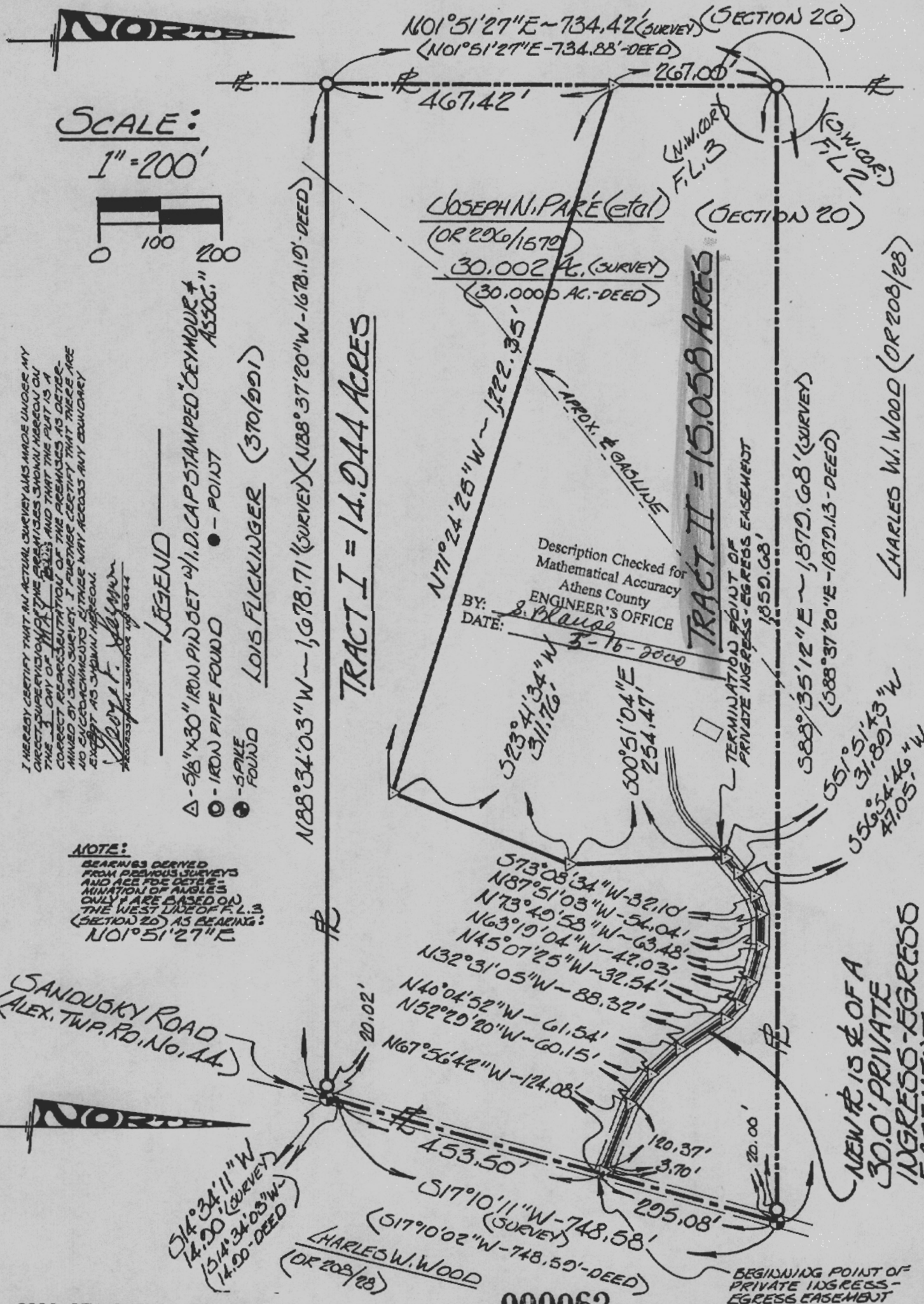
SANDUSKY ROAD (ALEX. TWP. RD. No. 44)



S14°34'11"W 14.00' (SURVEY)
S14°34'03"W 14.00' (DEED)

S17°10'11"W 748.58' (SURVEY)
S17°10'02"W 748.59' (DEED)
CHARLES W. WOOD (OR 208/28)

NEW #15 IS # OF A 30.0' PRIVATE INGRESS-EGRESS EASEMENT.



Description Checked for Mathematical Accuracy
Athens County
ENGINEER'S OFFICE
BY: S. Blaus
DATE: 3-16-2000

TRACT I = 14.944 ACRES

TRACT II = 15.058 ACRES

CHARLES W. WOOD (OR 208/28)

"Sight" Survey 970324-Z-0324

Tuesday, May 16, 2000 9:31 am.

Pg: 3

Registered to:

ATHENS COUNTY ENGINEER DEPT.

File Name:

C:\LOTSPL~1\ALEX\S20\T44-15-0.ZAK

	Point	Direction	Distance	Northing	Easting	Elevation
	11			4938.02081	6366.59993	0.000
Raw:		S73.0834W	32.1			
TR		S 73°08'34.0" W	32.100			
	12			4928.71221	6335.87925	0.000
Raw:		S56.5446W	47.05			
TR		S 56°54'46.0" W	47.050			
	13			4903.02690	6296.45886	0.000
Raw:		S51.5143W	31.89			
TR		S 51°51'43.0" W	31.890			
	14			4883.33296	6271.37657	0.000
Raw:		S00.5104E	254.47			
TR		S 0°51'04.0" E	254.470			
	15			4628.89104	6275.15651	0.000
Raw:		S23.4134W	311.76			
TR		S 23°41'34.0" W	311.760			
	16			4343.40827	6149.88125	0.000
Raw:		N71.2425W	1222.35			
TR		N 71°24'25.0" W	1222.350			
	17			4733.14777	4991.32929	0.000
Raw:		N01.5127E	267			
TR		N 1°51'27.0" E	267.000			
	18			5000.00747	4999.98378	0.000
IN		S 65°16'47.2" E	0.018			
	1			5000.00000	5000.00000	0.000

Area = 655925.805 Sq. Feet or 15.058 Acres

Precision Ratio	=	1 : 4.87E+23
Length Traversed	=	4867.578
Length To Close	=	0.000
Error in Latitude	=	0.000
Error in Departure	=	0.000
Error in Elevation	=	0.000

Area = 655925.805 Sq. Feet or 15.058 Acres

Total Angular Error	=	0°00'00.0"
Error Per Station	=	0°00'00.0"

Database Saved: Tuesday, May 16, 2000 9:31 am.

000063

"Sight" Survey 970324-Z-0324
 Tuesday, May 16, 2000 9:31 am.
 Pg: 1
 Registered to:
 ATHENS COUNTY ENGINEER DEPT.
 File Name:
 C:\LOTSPL~1\ALEX\S20\T44-15-0.ZAK

Point	Direction	Distance	Northing	Easting	Elevation
-------	-----------	----------	----------	---------	-----------

Database opened: Tuesday, May 16, 2000 9:09 am.

Assigned point

	1		5000.00000	5000.00000	0.000
Start					
	1		5000.00000	5000.00000	0.000
Raw:	s88.3512e	1879.13			
TR	S 88°35'12.0" E	1879.130			
	2		4953.65160	6878.55833	0.000
Raw:	s17.1011w	295.08			
TR	S 17°10'11.0" W	295.080			
	3		4671.72199	6791.44977	0.000
Raw:	n67.5642w	124.08			
TR	N 67°56'42.0" W	124.080			
	4		4718.31359	6676.44947	0.000
Raw:	n52.2920w	60.15			
TR	N 52°29'20.0" W	60.150			
	5		4754.93984	6628.73636	0.000
Raw:	n40.0452w	61.54			
TR	N 40°04'52.0" W	61.540			
	6		4802.02617	6589.11252	0.000
Raw:	n32.3105w	88.32			
TR	N 32°31'05.0" W	88.320			
	7		4876.49955	6541.63474	0.000
Raw:	n45.0725w	32.54			
TR	N 45°07'25.0" W	32.540			
	8		4899.45911	6518.57590	0.000
Raw:	n63.1904w	42.03			
TR	N 63°19'04.0" W	42.030			
	9		4918.33233	6481.02165	0.000
Raw:	n73.4958w	63.48			
TR	N 73°49'58.0" W	63.480			
	10		4936.00781	6420.05208	0.000
Raw:	n87.5103w	54.04			
TR	N 87°51'03.0" W	54.040			
	11		4938.03438	6366.05009	0.000
Raw:	s73.0834w	32.10			
TR	S 73°08'34.0" W	32.100			
	12		4928.72577	6335.32942	0.000
Raw:	s56.5446w	47.05			
TR	S 56°54'46.0" W	47.050			
	13		4903.04046	6295.90902	0.000
Raw:	s51.5143w	31.89			
TR	S 51°51'43.0" W	31.890			
	14		4883.34653	6270.82674	0.000
Raw:	s00.5104e	254.47			
TR	S 0°51'04.0" E	254.470			
	15		4628.90460	6274.60668	0.000
Raw:	s23.4134w	311.76			
TR	S 23°41'34.0" W	311.760			

000064

"Sight" Survey 970324-Z-0324
 Tuesday, May 16, 2000 9:31 am.
 Pg: 2
 Registered to:
 ATHENS COUNTY ENGINEER DEPT.
 File Name:
 C:\LOTSPL~1\ALEX\S20\T44-15-0.ZAK

	Point	Direction	Distance	Northing	Easting	Elevation
	16			4343.42184	6149.33142	0.000
Raw:	n71.2425w		1222.35			
TR	N 71°24'25.0" W		1222.350			
	17			4733.16133	4990.77946	0.000
Raw:	n01.5127e		267.00			
TR	N 1°51'27.0" E		267.000			
	18			5000.02103	4999.43395	0.000
IN	S 87°52'19.2" E		0.566			
	1			5000.00000	5000.00000	0.000

Editing Raw Data
 Traverse Modified
 Rerunning Modified Traverse

Inversing Adjusted Points

Go to	1			5000.00000	5000.00000	0.000
EP	S 0°00'00.0" E		10.000	New Backsight Bng. (B.S. is ~BS1)		
Start	1			5000.00000	5000.00000	0.000
Raw:	S88.3512E		1879.68			
TR	S 88°35'12.0" E		1879.680			
	2			4953.63803	6879.10816	0.000
Raw:	S17.1011W		295.08			
TR	S 17°10'11.0" W		295.080			
	3			4671.70842	6791.99960	0.000
Raw:	N67.5642W		124.08			
TR	N 67°56'42.0" W		124.080			
	4			4718.30002	6676.99930	0.000
Raw:	N52.2920W		60.15			
TR	N 52°29'20.0" W		60.150			
	5			4754.92628	6629.28620	0.000
Raw:	N40.0452W		61.54			
TR	N 40°04'52.0" W		61.540			
	6			4802.01260	6589.66235	0.000
Raw:	N32.3105W		88.32			
TR	N 32°31'05.0" W		88.320			
	7			4876.48598	6542.18458	0.000
Raw:	N45.0725W		32.54			
TR	N 45°07'25.0" W		32.540			
	8			4899.44554	6519.12574	0.000
Raw:	N63.1904W		42.03			
TR	N 63°19'04.0" W		42.030			
	9			4918.31877	6481.57148	0.000
Raw:	N73.4958W		63.48			
TR	N 73°49'58.0" W		63.480			
	10			4935.99424	6420.60191	0.000
Raw:	N87.5103W		54.04			
TR	N 87°51'03.0" W		54.040			

000065