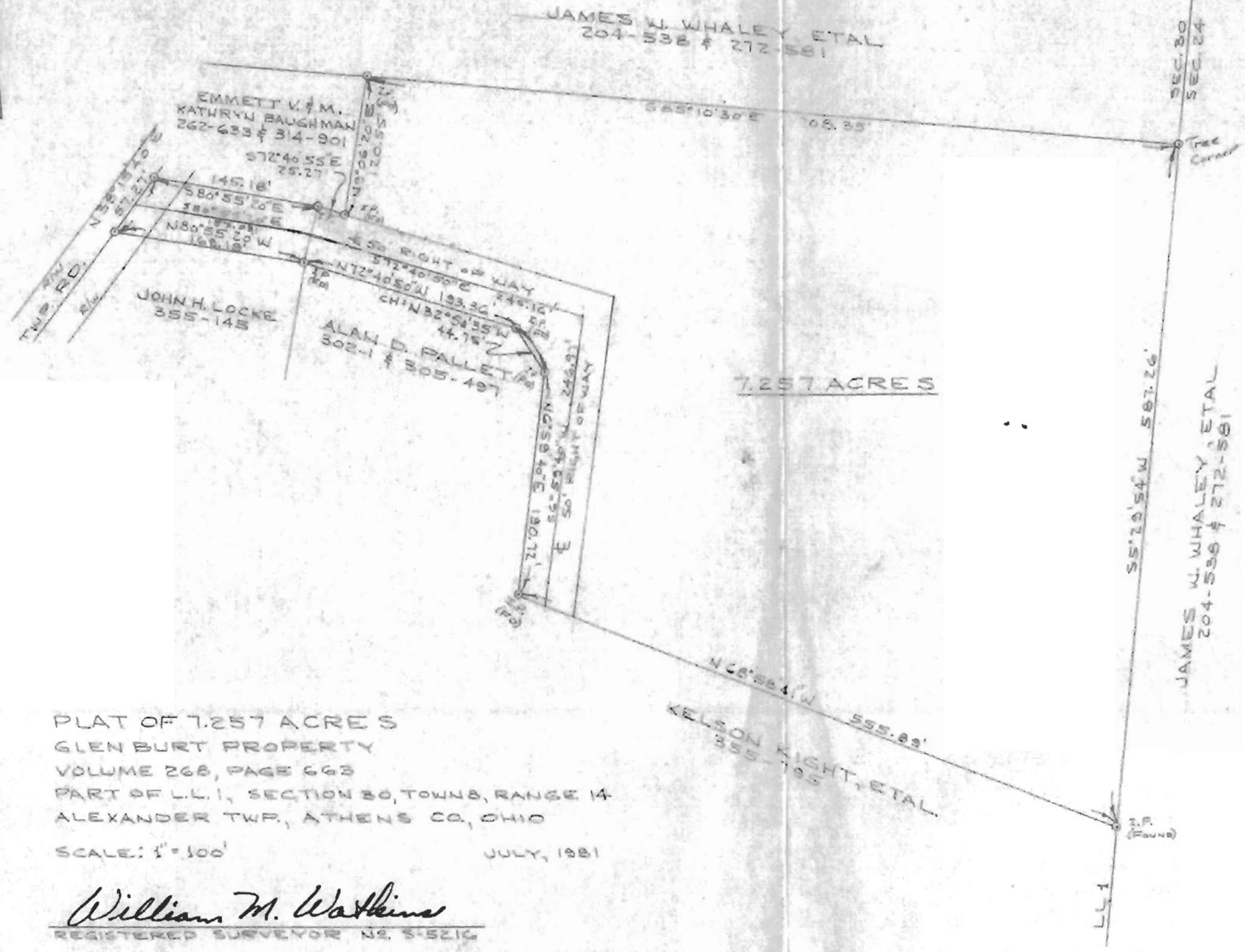


111  
N



7.257 ACRES

PLAT OF 7.257 ACRES  
 GLEN BURT PROPERTY  
 VOLUME 268, PAGE 663  
 PART OF L.L.1, SECTION 20, TOWNS, RANGE 14  
 ALEXANDER TWP., ATHENS CO., OHIO  
 SCALE: 1" = 100' JULY, 1981

*William M. Watkins*  
 REGISTERED SURVEYOR NO. 5-5216

