

C. TIM NEWMAN
Professional Surveyor

66 Elmwood Place
Athens, Ohio 45701

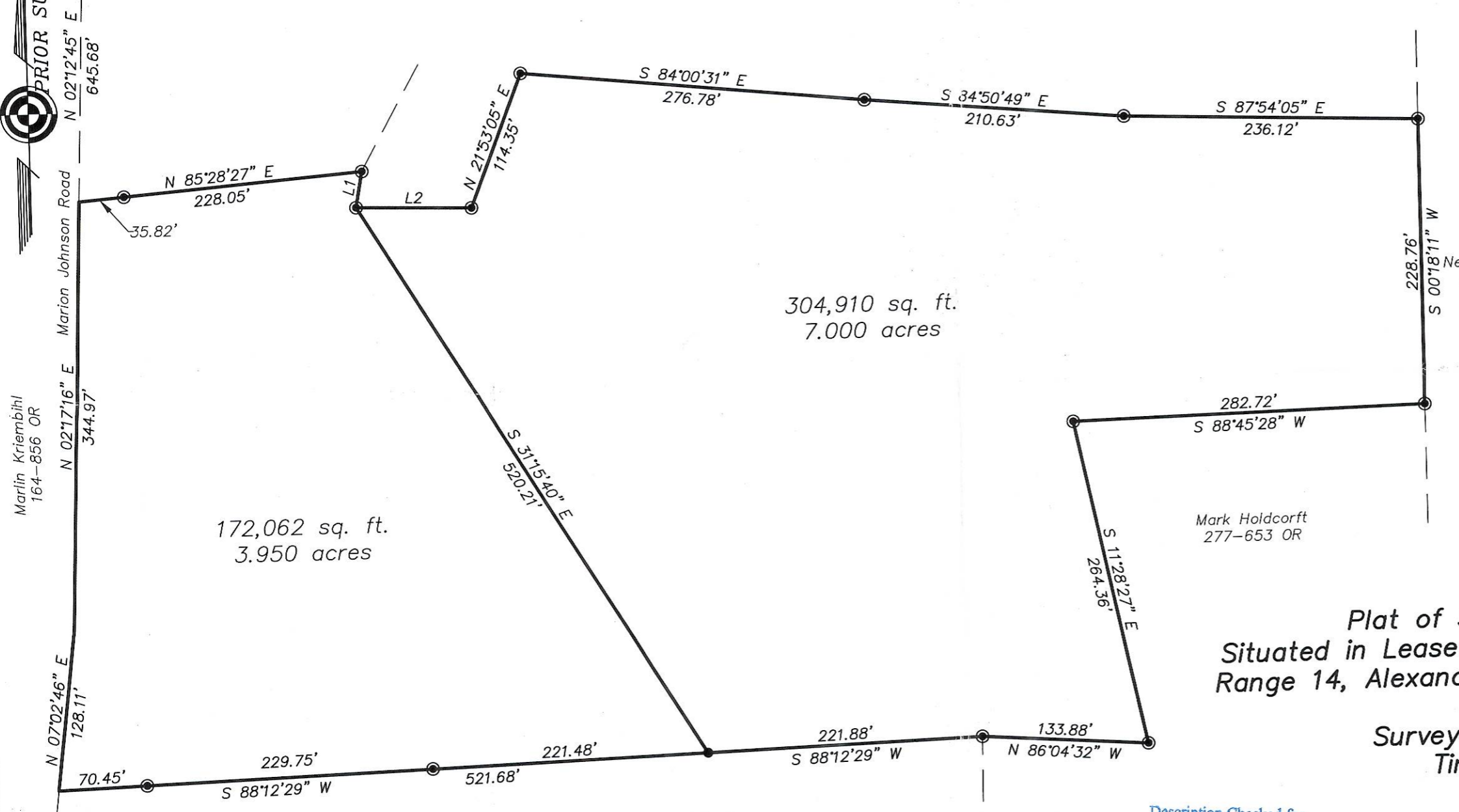
740-594-1884
FAX 740-594-9413

LINE TABLE		
LINE	LENGTH	BEARING
L1	29.33	S10°31'13"W
L2	92.97	S88°24'04"E



Northwest Corner
Lease Lot 2
Section 36

Larry E. Cooper
293-701 OR



- △ = Railroad Spike Found
- ▲ = Railroad Spike Set
- ⊙ = Iron Pin Found
- = Iron Pin Set
- = Stone Found
- ⊕ = Monument Found

Nedra Zirkle Trust
274-1154 OR

Mark Holdcroft
277-653 OR

Devid Kasler
132-780 OR

Plat of Survey of 2 Tracts
Situated in Lease Lot 2, Section 36, Town 8,
Range 14, Alexander Township, Athens County,
Ohio
Surveyed May 2006 for:
Timothy Arnold

Description Checked for
Mathematical Accuracy
Athens County
ENGINEER'S OFFICE

BY: S. Blaus
DATE: 5-10-06

Charles T. Newman
Charles T. Newman

GRAPHIC SCALE



(IN FEET)
1 inch = 100 ft.