

DESCRIPTION OF A 35.805 ACRE TRACT

Situated in Section 18, T.9,R.13, Ames Township, Athens County, Ohio and being more particularly described as follows:

Commencing at the North-east corner of Section 18, thence, South, 40.58 chains (deed) to a Point; thence, along Grantor's North-line, North 89 Degrees 46 Minutes 54 Seconds West, 462.46 feet to an iron Pin set, said Pin being the Point of beginning for the tract of land herein described:

Thence, continuing along Grantor's North-line North 89 Degrees 46 Minutes 54 Seconds West, 1800.00 feet to a railroad spike set in State Route 329; thence, along said road, South 23 Degrees 18 Minutes 32 Seconds East, 564.82 feet to a Point; thence, South 25 Degrees 13 Minutes 10 Seconds East, 187.79 feet to a Point; thence, South 28 Degrees 58 Minutes 28 Seconds East, 216.80 feet to a Point; thence, South 30 Degrees 11 Minutes 28 Seconds East, 623.33 feet to a Point; thence, leaving said road, North 52 Degrees 44 Minutes 40 Seconds East, 1064.32 feet to an iron Pin set; Passing an iron Pin set at 33.82 feet; thence, North 16 Degrees 46 Minutes 20 Seconds East, 799.93 feet to the Point of beginning and containing 35.805 acres.

Subject to all easements and rights of way of record.

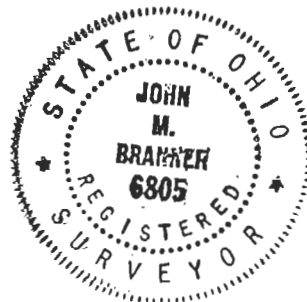
John M. Branner

John M. Branner R.L.S. 6805

Description checked for
Mathematical Accuracy
ATHENS COUNTY
ENGINEERING OFFICE

BY: *Bob Eichenberg*

DATE: *5/15/86*



EVERETT 104.73 AC.

WILLIAMSON 64.05 AC.

N.E. COR. SEC. 18

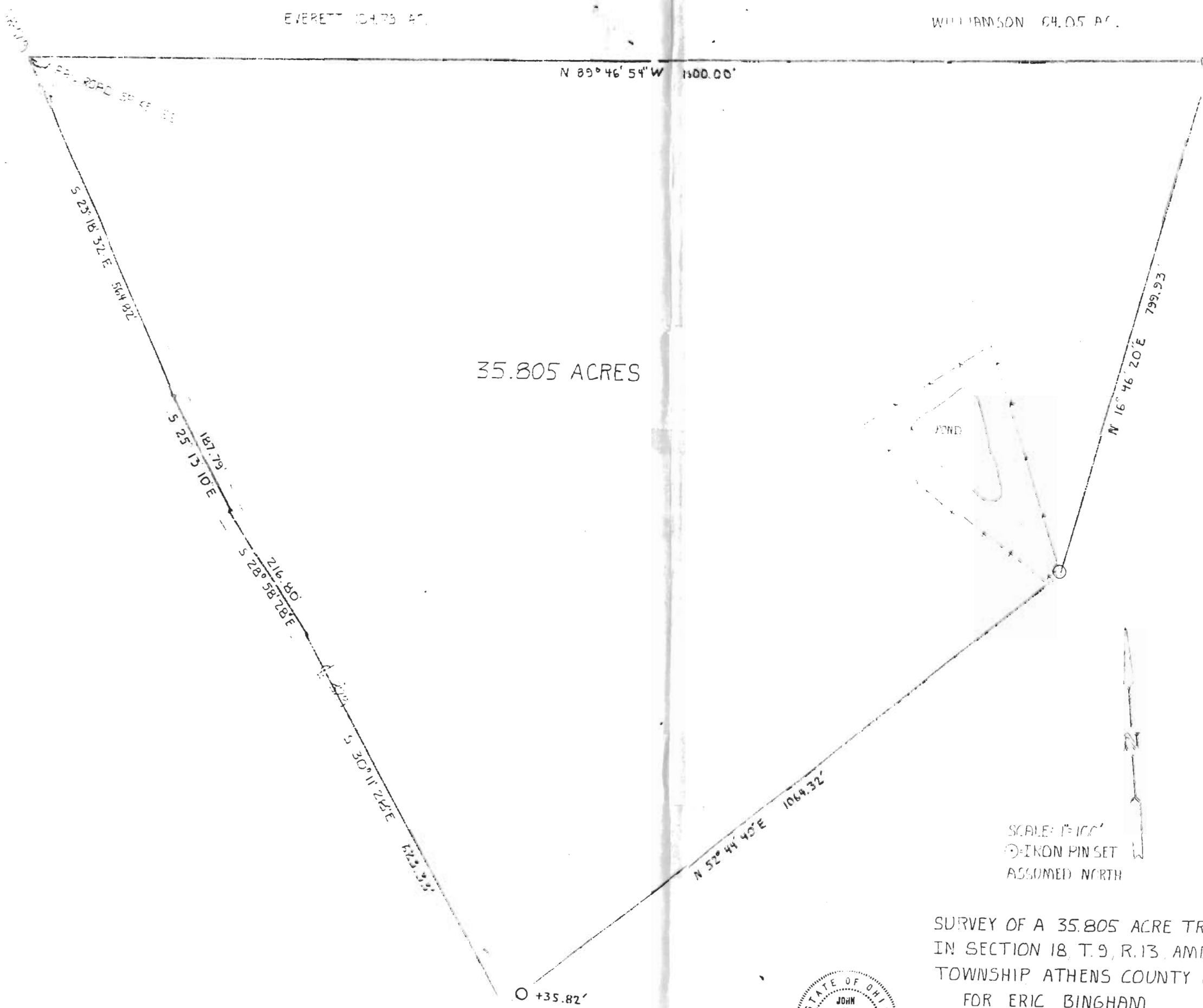
40.58 CH
(DI)

N 89° 46' 54" W 1100.00'

462.46

35.805 ACRES

BANK C.N.E. N.A.
OF
ATHENS



SCALE: 1"=100'
○ IRON PIN SET
ASSUMED NORTH

SURVEY OF A 35.805 ACRE TRACT
 IN SECTION 18, T. 9, R. 13, AMES
 TOWNSHIP ATHENS COUNTY OHIO
 FOR ERIC BINGHAM
 SURVEYED MAY 86
John M. Branner
 JOHN M. BRANNER R.L.S. 6805
 RT. 3, ATHENS, O., 592-5778

