

Phone 740-753-1264  
Fax 740-753-1264

**Description of a 6.088 Acre Tract**

Situated in Section 19, T-6, R-13, Ames Township, Athens County, State of Ohio and being a part of a tract as described in the second tract of a deed described in Volume 301, Page 1033 of the Official Records of Athens County and being more particularly described as follows:

BEGINNING at a point in the center of CR-34 that bears North 53°28'22"West, 1586.43 feet (calculated from deed) from the southeast corner of Section 19, THENCE along a new line North 21°05'27"East, 201.27 feet to a point in the center of a creek, passing iron pins set at 27.65 feet and at 168.83 feet, THENCE along the center of said creek the following twenty four courses;

South 67°57'32"East, 68.98 feet to a point,  
North 46°07'30"East, 110.56 feet to a point,  
South 81°14'14"East, 46.48 feet to a point,  
South 49°36'13"East, 85.52 feet to a point,  
South 23°48'16"East, 48.43 feet to a point,  
South 52°28'10"East, 121.17 feet to a point,  
North 67°34'49"East, 52.04 feet to a point,  
South 83°38'07"East, 47.44 feet to a point,  
South 43°18'13"East, 35.58 feet to a point,  
South 4°27'48"West, 50.17 feet to a point,  
South 32°17'43"East, 55.12 feet to a point,  
North 40°39'45"East, 40.00 feet to a point,  
South 24°07'21"East, 25.18 feet to a point,  
South 35°45'00"East, 73.00 feet to a point,  
South 51°47'06"East, 69.70 feet to a point,  
South 11°38'18"East, 46.95 feet to a point,  
South 19°59'14"East, 53.74 feet to a point,  
South 28°29'16"East, 63.99 feet to a point,  
South 9°24'10"East, 85.42 feet to a point,  
South 6°42'37"West, 74.90 feet to a point,  
South 16°49'34"East, 83.79 feet to a point,  
South 30°44'09"East, 68.98 feet to a point,  
South 38°48'57"East, 70.71 feet to a point,  
South 18°36'37"West, 49.15 feet to a PK Nail set in the center of a bridge on CR-34 crossing the creek, an iron pin set for reference bears North 15°39'11"West, 33.54 feet from said PK Nail,

THENCE along the center of CR-34 the following nine courses;

Description checked for  
Mathematical Accuracy  
ATHENS COUNTY  
ENGINEER'S OFFICE  
BY: K. Cantel  
DATE: 3/29/07

Ames #19

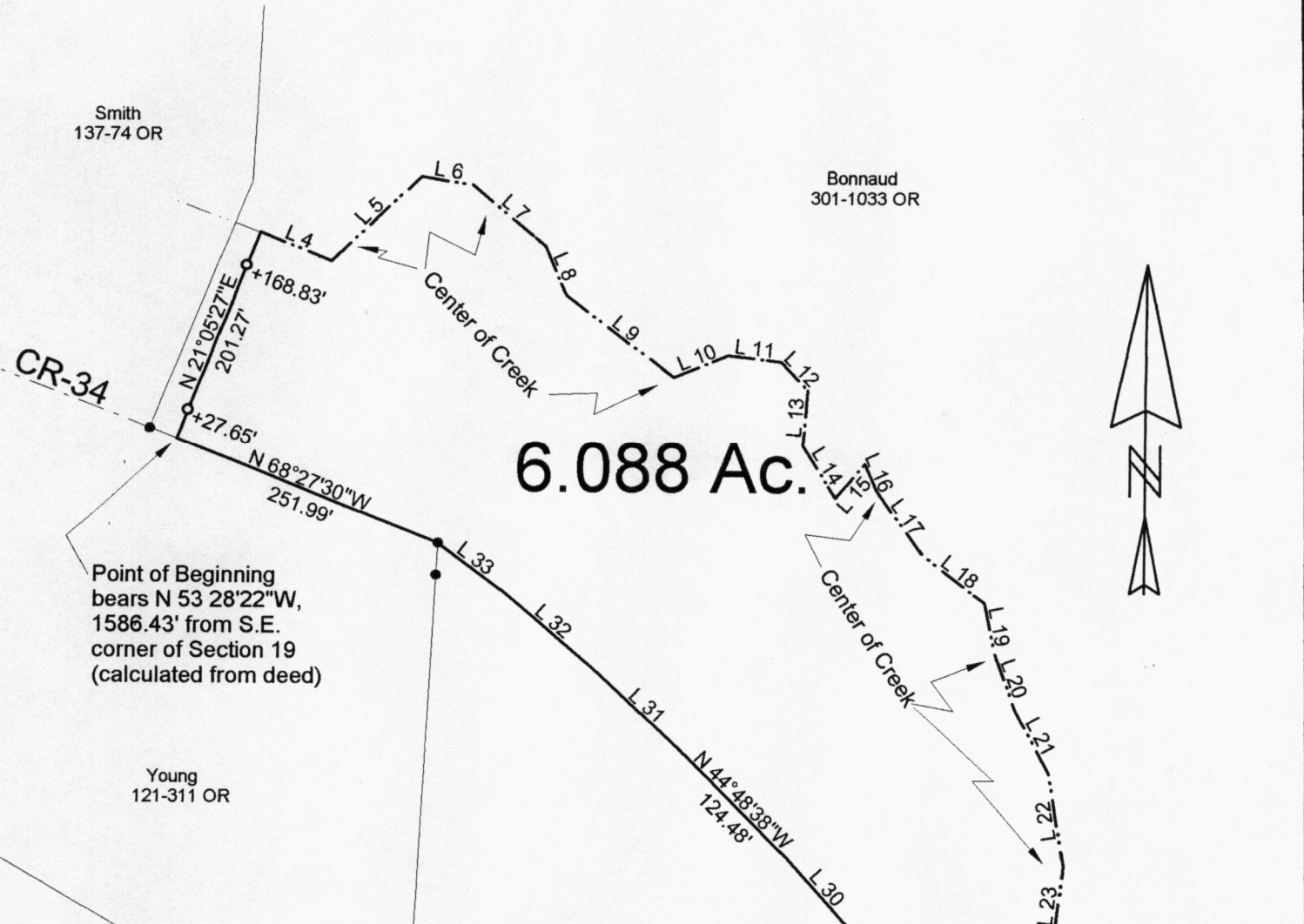
North 58°49'59"West, 90.85 feet to a point,  
North 46°48'31"West, 93.12 feet to a point,  
North 39°57'46"West, 187.64 feet to a point,  
North 41°36'51"West, 90.37 feet to a point,  
North 44°48'38"West, 124.48 feet to a point,  
North 46°49'44"West, 119.04 feet to a point,  
North 49°13'58"West, 106.82 feet to a point,  
North 52°55'37"West, 72.00 feet to an iron pin found at the northeast corner of a  
5.00 acre tract,  
North 68°27'30"West, 251.99 feet to the point of beginning and containing 6.088  
acres.

Bearings are to an assumed meridian and are for angular determination only

Subject to all Easements and Rights of Way of record



Description checked for  
Mathematical Accuracy  
ATHENS COUNTY  
ENGINEER'S OFFICE  
BY: \_\_\_\_\_  
DATE: \_\_\_\_\_

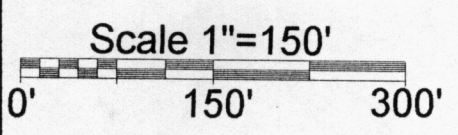


6.088 Ac.

Point of Beginning  
bears N 53°28'22"W,  
1586.43' from S.E.  
corner of Section 19  
(calculated from deed)

Line	Bearing	Distance
4	S 67°57'32"E	68.98'
5	N 46°07'30"E	110.56'
6	S 81°14'14"E	46.48'
7	S 49°36'13"E	85.52'
8	S 23°48'16"E	48.43'
9	S 52°28'10"E	121.17'
10	N 67°34'49"E	52.04'
11	S 83°38'07"E	47.44'
12	S 43°18'13"E	35.58'
13	S 4°27'48"W	50.17'
14	S 32°17'43"E	55.12'
15	N 40°39'45"E	40.00'
16	S 24°07'21"E	25.18'
17	S 35°45'00"E	73.00'
18	S 51°47'06"E	69.70'
19	S 11°38'18"E	46.95'
20	S 19°59'14"E	53.74'
21	S 28°29'16"E	63.99'
22	S 9°24'10"E	85.42'
23	S 6°42'37"W	74.90'
24	S 16°49'34"E	83.79'
25	S 30°44'09"E	68.98'
26	S 38°48'57"E	70.71'
27	S 18°36'37"W	49.15'
28	N 58°49'59"W	90.85'
29	N 46°48'31"W	93.12'
30	N 41°36'51"W	90.37'
31	N 46°49'44"W	119.04'
32	N 49°13'58"W	106.82'
33	N 52°55'37"W	72.00'

- = Iron Pin Set
- ▲ = P K Nail set
- = Iron Pin Found

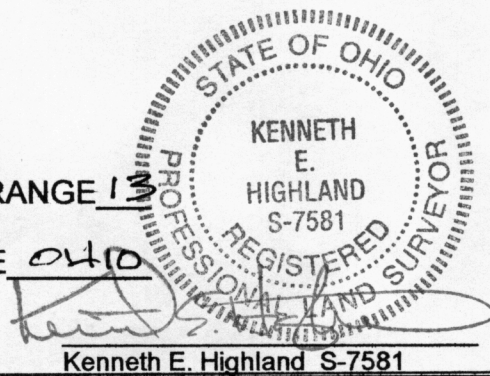


Reference Iron Pin Set  
bears N 15°39'11"W,  
33.54' from PK Nail  
set in Bridge

Description checked for  
Mathematical Accuracy  
ATHENS COUNTY  
ENGINEERS OFFICE  
BY: *K. Highland*  
DATE: 3-27-03

PLAT OF SURVEY OF A 6.088 Ac. TRACT  
 SURVEYED FOR MAY BONNAUD  
 SUBDIVISION —  
 TOWNSHIP AMES SECTION 19 TOWN 6 RANGE 1  
 CORPORATION — COUNTY ATHENS STATE OHIO  
 SCALE 1" = 150' DATE MAR, 2003

Kenneth E. Highland  
80 Fayette St.  
Nelsonville, Ohio 45764  
740-753-1264



Kenneth E. Highland S-7581