

BRANNER SURVEYING
MEMBER-PROFESSIONAL LAND SURVEYORS OF OHIO
12500 PEACH RIDGE ROAD
ATHENS, OHIO 45701

JOHN M. BRANNER
Registered Land Surveyor

TELEPHONE
(614) 592-5778

DESCRIPTION OF A 9.83 ACRE TRACT

Situated in Fraction 30, T.6, R.13, Ames Township, Athens County, Ohio and being more particularly described as follows:

Beginning at a railroad spike at the intersection of County Road 36 with Township Road 335, said spike being a corner to a 32.41 acre tract as described in Volume 13, Page 326;

thence along County Road 36 N 36°06'E, 194.29' to a point;

thence, leaving said road S 36°49'14"E, 392.02' to an iron pin set, passing an iron pin set at 22.5'

thence, South 01°49'E, 179.04' to an iron pin set;

thence, S 23°11'19"E, 290.34' to an iron pin set;

198.00' thence, along Grantor's South-lines, S 34°35'22"W, to an iron pin set;

thence, S 51°35'22"W, 128.04' to an iron pin set;

thence, S 83°35'22"W, 105.60' to an iron pin set;

thence, N 79°24'36"W, 99.00' to an iron pin set;

thence, N 63°20'W, 207.40' to a point in County Road 36, passing an iron pin set at 176.2';

thence, along said road, N 07°45'W, 266.55' to a point;

thence, N 06°30'41"E, 241.55' to a point;

thence, N 17°40'18"E, 83.83' to a rail road spike;

thence, N 35°10'48"E, 197.90' to the point of beginning

and containing 9.83 acres.

Subject to all easements and rights of way of record.

John M. Branner
John M. Branner
R.L.S. 6805

Description checked

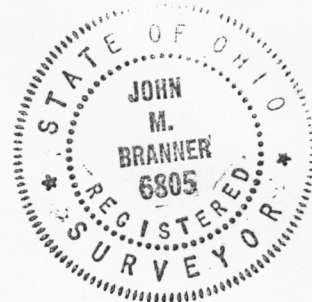
Mathematical Accuracy

ATHENS COUNTY

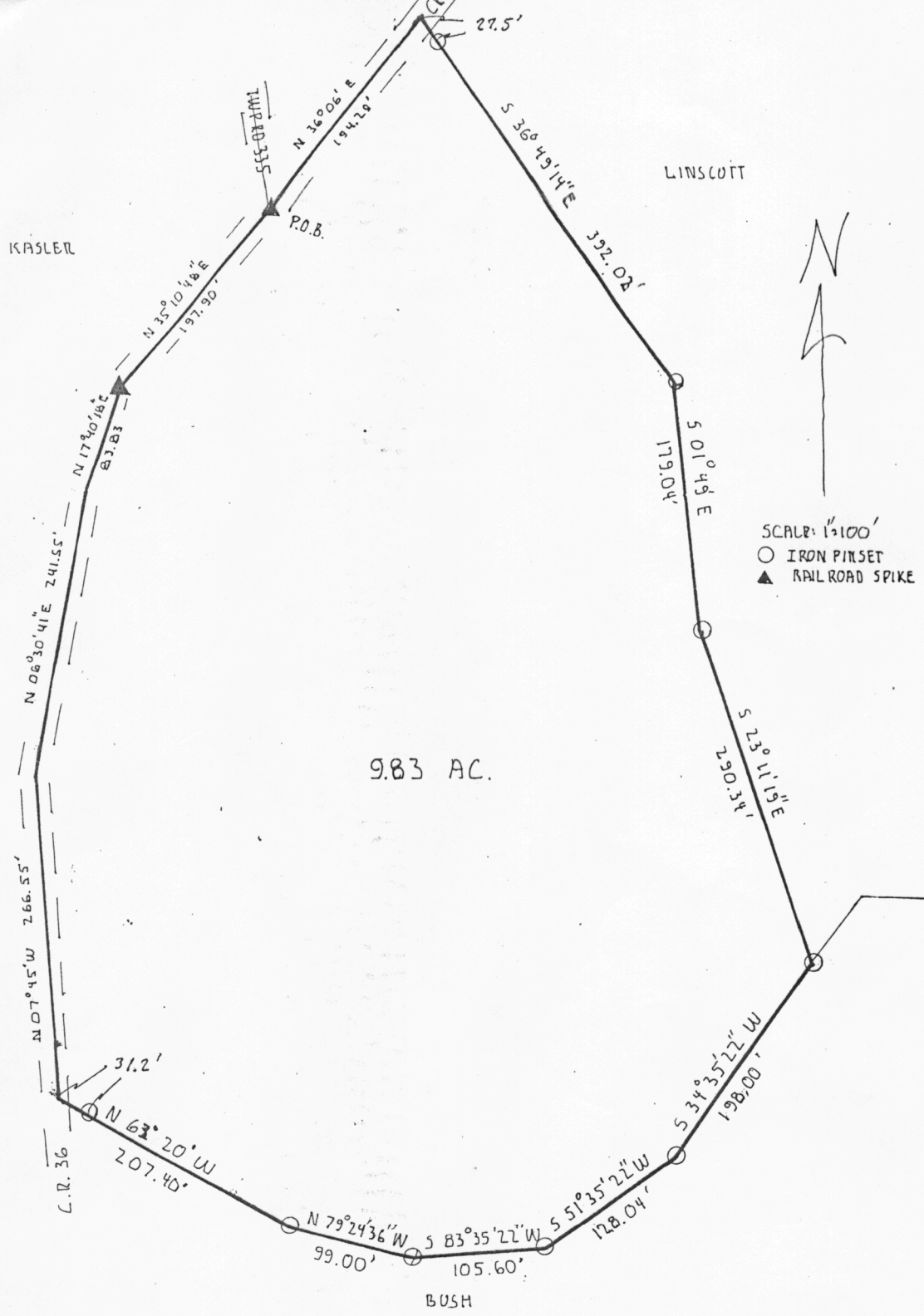
ENGINEER'S OFFICE

BY: *Bob Eichenberg*

DATE: 3-31-88



AMS# 21



SURVEY OF A 9.83 ACRE TRACT
 IN FR. 30, SEC. 21, T. 6 R. 13, AMES TWP.,
 ATHENS COUNTY, OHIO
 SURVEYED MARCH 1988



John M. Branner
 JOHN M. BRANNER R.L.S. 6805