

SOUTHEASTERN LAND SURVEYS

LEONARD F. SWOYER
REGISTERED PROFESSIONAL LAND SURVEYOR

3428 Pleasant Hill Road
Athens, Ohio 45701
740/593-8701

6.328 ACRE TRACT

Situated in Section 25, Town 6, Range 13, Ames Township, Athens County, Ohio and described as follows:

Commencing at a found 5/8" rebar with cap at the westerly northwest corner of a 15.1824 acre tract described in Volume 289, Page 2384, Athens County Official Records which bears North 85 Degrees 45 Minutes 00 Seconds West a distance of 2743.88 feet, North 03 Degrees 58 Minutes 00 Seconds East a distance of 1572.56 feet, and North 04 Degrees 35 Minutes 06 Seconds East a distance of 562.13 feet from the estimated southeast corner of Section 25, Ames Township; thence along a random line on an assumed bearing of North 84 Degrees 56 Minutes 46 Seconds West for a distance of 706.86 feet to a point in the center of Ames Township Road 217 for THE TRUE POINT OF BEGINNING of this tract; thence along the center of said township road, South 27 Degrees 51 Minutes 34 Seconds West for a distance of 59.90 feet to a point; thence leaving the center of said township road along a new line, 25 feet south of the center line of an existing unpaved access route for the following fifteen bearings and distances: 1) South 84 Degrees 26 Minutes 49 Seconds West for a distance of 313.14 feet to a point; 2) thence North 88 Degrees 26 Minutes 38 Seconds West for a distance of 110.53 feet to a point; 3) thence North 83 Degrees 47 Minutes 41 Seconds West for a distance of 74.24 feet to a point; 4) thence South 82 Degrees 34 Minutes 23 Seconds West for a distance of 28.76 feet to a point; 5) thence South 48 Degrees 37 Minutes 20 Seconds West for a distance of 97.29 feet to a point; 6) thence South 44 Degrees 39 Minutes 31 Seconds West for a distance of 160.97 feet to a point; 7) thence South 53 Degrees 26 Minutes 03 Seconds West for a distance of 51.84 feet to a point; 8) thence South 61 Degrees 58 Minutes 40 Seconds West for a distance of 67.98 feet to a point; 9) thence South 73 Degrees 57 Minutes 35 Seconds West for a distance of 52.36 feet to a point; 10) thence South 84 Degrees 38 Minutes 24 Seconds West for a distance of 99.31 feet to a

point; 11) thence North 85 Degrees 34 Minutes 05 Seconds West for a distance of 92.79 feet to a point; 12) thence South 84 Degrees 57 Minutes 38 Seconds West for a distance of 89.22 feet to a point; 13) thence South 73 Degrees 27 Minutes 09 Seconds West for a distance of 93.17 feet to a point; 14) thence South 67 Degrees 57 Minutes 54 Seconds West for a distance of 99.17 feet to a point for the southwest corner of this tract; thence leaving said line, North 01 Degrees 00 Minutes 38 Seconds West (passing a set iron pin at 53.74 feet and passing a 24" diameter white oak at 402.03 feet) for a total distance of 540.50 feet to a set iron pin for the northwest corner of this tract; thence North 79 Degrees 35 Minutes 52 Seconds East for a distance of 206.91 feet to a set iron pin; thence South 57 Degrees 12 Minutes 10 Seconds East for a distance of 122.26 feet to a set iron pin; thence South 49 Degrees 53 Minutes 32 Seconds East for a distance of 96.80 feet to a set iron pin; thence South 39 Degrees 00 Minutes 32 Seconds East for a distance of 187.73 feet to a set iron pin; thence South 42 Degrees 48 Minutes 01 Seconds East (passing a set iron pin at 145.22 feet) for a total distance of 145.79 feet to a point 25 feet north of the center line of aforesaid existing unpaved access route; thence along a line 25 feet north of said center line for the following six bearings and distances: 1) North 44 Degrees 39 Minutes 31 Seconds East for a distance of 148.31 feet to a point; 2) thence North 48 Degrees 37 Minutes 20 Seconds East for a distance of 114.29 feet to a point; 3) thence North 82 Degrees 34 Minutes 23 Seconds East for a distance of 50.00 feet to a point; 4) thence South 83 Degrees 47 Minutes 41 Seconds East for a distance of 78.19 feet to a point; 5) thence South 88 Degrees 26 Minutes 38 Seconds East for a distance of 105.39 feet to a point; 6) thence North 84 Degrees 26 Minutes 49 Seconds East for a distance of 343.02 feet to THE POINT OF BEGINNING containing 6.328 acres, and being a part of a 116.78 acre tract described in Volume 303, Page 242, Athens County Deed Records.

Note: Unless otherwise noted all set iron pins are 5/8" in diameter rebar, 30 inches in length and capped with a plastic identification marker inscribed L. F. Swoyer P.S. 6765.

Description checked for
Mathematical Accuracy
ATHENS COUNTY
ENGINEER'S OFFICE
BY: S. Blausen
DATE: 8-2-02

15

The above description was prepared under the supervision of Leonard F. Swoyer, Jr., Registered Professional Land Surveyor Number 6765 and based on a field survey performed by Southeastern Land Surveys dated August 1, 2002.

Subject to all easements and right of ways of record.



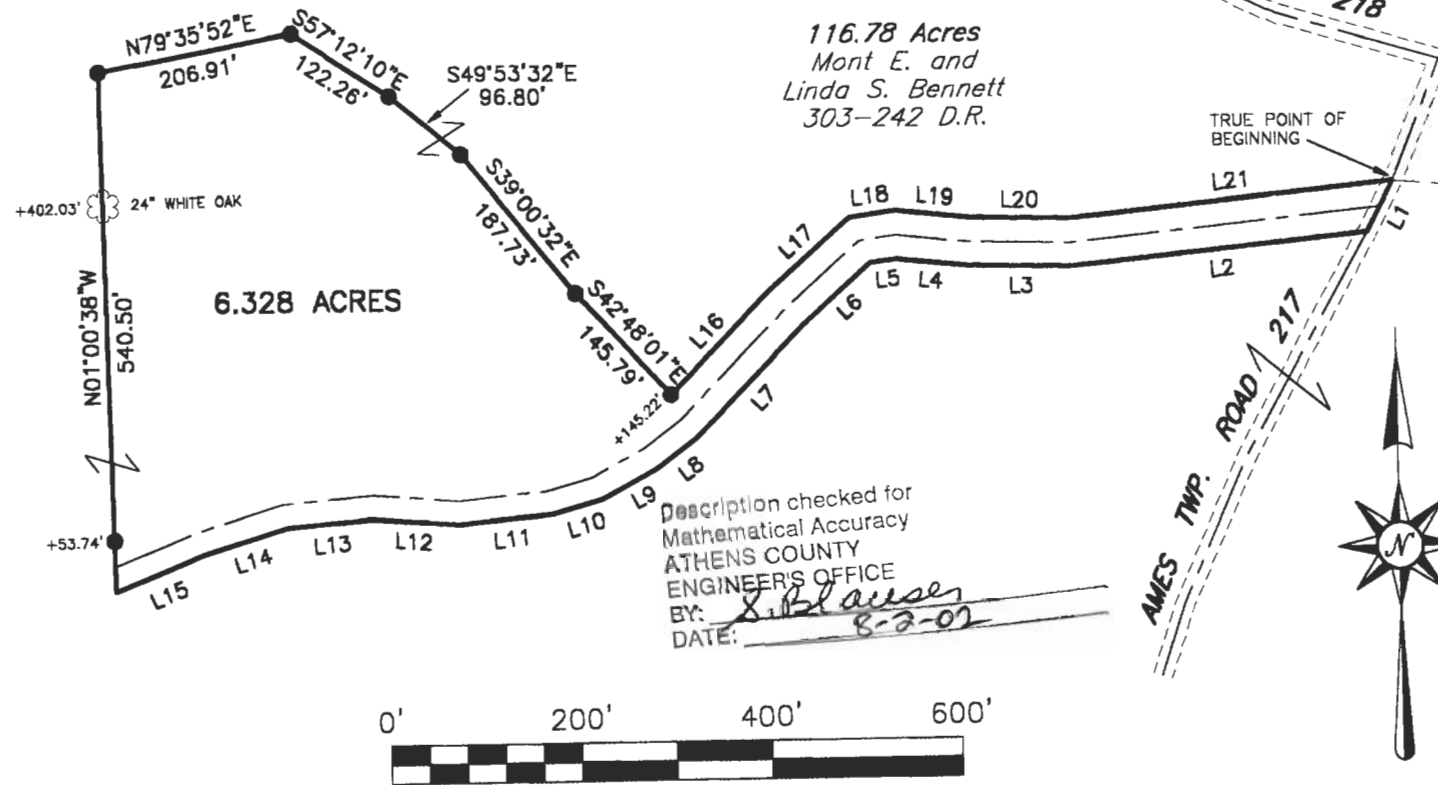
SOUTHEASTERN LAND SURVEYS

LEONARD F. SWOYER
REGISTERED PROFESSIONAL LAND SURVEYOR

3428 PLEASANT HILL ROAD
ATHENS, OHIO 45701
740/393-8701

- 5/8" REBAR WITH CAP FOUND
 - IRON PIN SET-5/8" REBAR, CAPPED
SCRIBED L.F.S. PS 6765
- BEARINGS ASSUMED RELATIVE TO SOUTH
LINE OF SECTION 25 AS N85°45'W.

REFERENCES
DEEDS OF RECORD AS SHOWN.
PREVIOUS SURVEY OF 30.365 ACRES
BY GREGORY K. WRIGHT.
TAX PLAT



116.78 Acres
Mont E. and
Linda S. Bennett
303-242 D.R.

116.78 Acres
Mont E. and
Linda S. Bennett
303-242 D.R.

POINT OF COMMENCEMENT:
THIS POINT BEARS N85°45'W 2743.88',
N03°58'E 1572.56' AND N04°35'06"E
562.13' FROM THE ESTIMATED SE COR.
OF SECTION 25, AMES TOWNSHIP

Description checked for
Mathematical Accuracy
ATHENS COUNTY
ENGINEER'S OFFICE
BY: *Sublauer*
DATE: *8-2-02*

LINE	BEARING	DISTANCE
L1	S27°51'34"W	59.90'
L2	S84°26'49"W	313.14'
L3	N88°26'38"W	110.53'
L4	N83°47'41"W	74.24'
L5	S82°34'23"W	28.76'
L6	S48°37'20"W	97.29'
L7	S44°39'31"W	160.97'
L8	S53°26'03"W	51.84'
L9	S61°58'40"W	67.98'
L10	S73°57'35"W	52.36'
L11	S84°38'24"W	99.31'
L12	N85°34'05"W	92.79'
L13	S84°57'38"W	89.22'
L14	S73°27'09"W	93.17'
L15	S67°57'54"W	99.17'
L16	N44°39'31"E	148.31'
L17	N48°37'20"E	114.29'
L18	N82°34'23"E	50.00'
L19	S83°47'41"E	78.19'
L20	S88°26'38"E	105.39'
L21	N84°26'49"E	343.02'

30.365 Acres Total
(15.1824 Acres)
Carl M. and Linda Bauer
289-2384 O.R.

(15.1825 Ac.)

Plat of _____ Survey of a 6.328 Acre Tract **Scale: 1" = 200'**
 Surveyed for: Liz Bennett **Date: 08-01-02**
 Subdivision _____
 Township Ames **Section 25 Town 6 Range 13**
 Corporation _____ **County Athens Ohio**
Leonard F. Swoyer Jr.
Leonard F. Swoyer Jr. Reg. Professional Land Surveyor No. 6765

