

62113
3-3300

DESCRIPTION OF A 53.47 ACRE TRACT

Situated in Fractions 32, and 33 of Section 27, T.6, R.13, Ames Township, Athens County, Ohio and being more particularly described as follows:

Commencing at the South-west corner of Fraction 33, thence, East, 11.90 chains (dead) to Grantor's, South-east corner; thence, North 07 Degrees 11 Minutes 27 Seconds East, 2039.85 feet to a fence corner at the South-west corner of a 59.60 acre tract (Vol. 133, Page 878); said point being the POINT OF BEGINNING;

thence, along the West-line of the aforementioned 59.60 acre tract, North 7 degrees 11 minutes 27 seconds East, a distance of 2039.85 feet to a fence corner;

thence North 81 degrees 28 minutes 17 seconds West, a distance of 1170.53 feet to a fence corner;

thence South 8 degrees 43 minutes 12 seconds West, a distance of 1509.48 feet to a fence corner;

thence South 86 degrees 37 minutes 20 seconds East, a distance of 577.62 feet to a point, passing an iron pin found at 1.3 feet;

thence South 5 degrees 27 minutes 00 seconds West, a distance of 214.67 feet to a point;

thence South 70 degrees 25 minutes 00 seconds East, a distance of 126.00 feet to an iron pin found;

thence South 21 degrees 41 minutes 00 seconds West, a distance of 311.47 feet to an iron pin found;

thence South 58 degrees 36 minutes 00 seconds East, a distance of 166.95 feet to a point;

thence South 13 degrees 54 minutes 48 seconds West, a distance of 229.18 feet to an iron pin found;

thence South 82 degrees 07 minutes 01 second West, a distance of 10.00 feet to a post;

thence South 18 degrees 10 minutes 24 seconds West, a distance of 481.96 feet to a point in State Route 550, passing an iron pin found at 446.96 feet;

thence, along said road, South 65 degrees 11 minutes 13 seconds East, a distance of 267.25 feet;

thence, leaving said road, North 24 degrees 31 minutes 52 seconds East, a distance of 238.27 feet to a point, passing an iron pin found at 35.26 feet;

thence North 17 degrees 24 minutes 13 seconds East, a distance of 207.41 feet to an iron pin found;

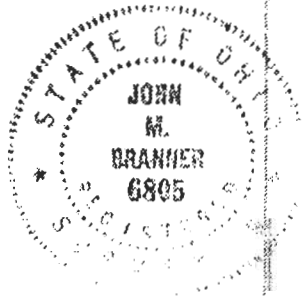
thence North 33 degrees 21 minutes 35 seconds East, a distance of 297.19 feet to a point;

thence North 30 degrees 08 minutes 00 seconds East, a distance of 111.15 feet to a point to a point;

thence South 78 degrees 55 minutes 19 seconds East, a distance of 21.70 feet to the POINT OF BEGINNING; said described tract containing 53.480 acres.

AMS # 27

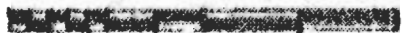
Subject to all easements and rights of way of record.



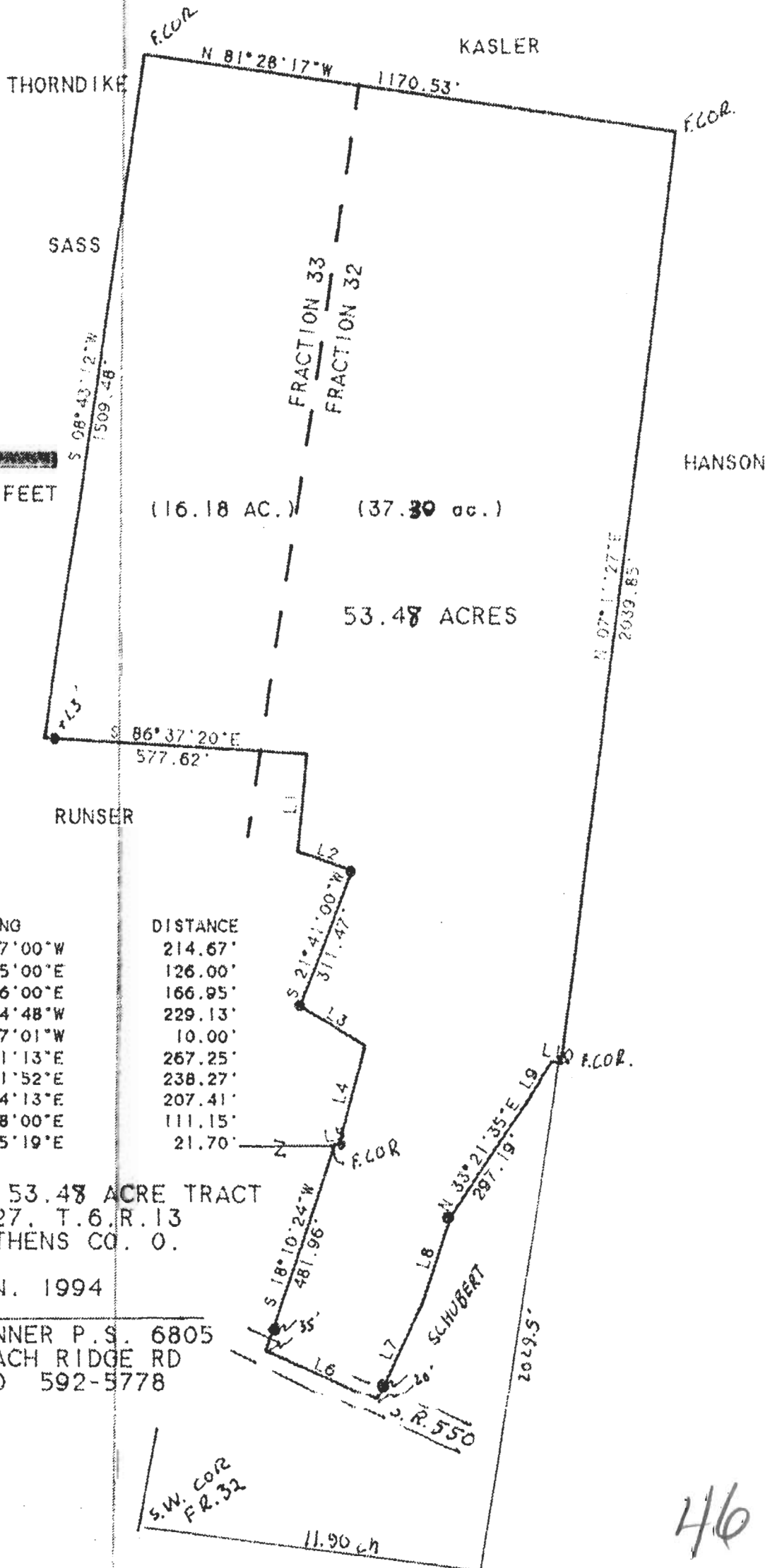
John M. Branner

Description checked for
 Mathematical Accuracy
 ATHENS COUNTY
 ENGINEER'S OFFICE
 BY: S. Blawie
 DATE: 1-21-94

45



SCALE 1 INCH - 300 FEET
• IRON PIN FOUND

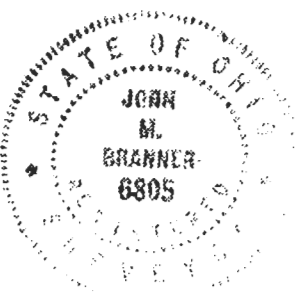


LINE	BEARING	DISTANCE
L 1	S 05° 27' 00" W	214.67'
L 2	S 70° 25' 00" E	126.00'
L 3	S 58° 36' 00" E	166.95'
L 4	S 13° 54' 48" W	229.13'
L 5	S 82° 07' 01" W	10.00'
L 6	S 65° 11' 13" E	267.25'
L 7	N 24° 31' 52" E	238.27'
L 8	N 17° 24' 13" E	207.41'
L 9	N 30° 08' 00" E	111.15'
L 10	S 78° 55' 19" E	21.70'

SURVEY OF A 53.48 ACRE TRACT
IN SECTION 27, T.6.R.13
AMES TWP. ATHENS CO. O.

SURVEYED JAN. 1994

JOHN M. BRANNER P.S. 6805
12500 N. PEACH RIDGE RD
ATHENS, OHIO 592-5778



46