

Exhibit A

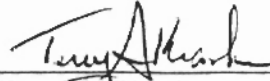
DESCRIPTION OF A TRACT OF 0.02 ACRES

Situated in the Village of Amesville, Ames Township, Athens County, Ohio and being a part of an abandoned public alley, to wit:

Commencing at the Southwest corner of inlot 18 in the Village of Amesville, thence South 16 degrees 45 minutes East a distance of 66.00 feet (deed) to a point in the South line of State Street; thence, along said State Street North 73 degrees 15 minutes East a distance of 103.9 feet to an iron pin at the Northwest corner of a 0.15-acre lot conveyed to Dale R. Newell and Marcia A. Newell in Volume 370, Page 121 of the Deed Records of Athens County; thence, along the West line of said 0.15-acre lot, South 17 degrees 46 minutes 12 seconds East a distance of 132.00 feet to an iron pin at the Southwest corner of the said 0.15-acre lot; thence North 73 degrees 15 minutes East a distance of 28.10 feet along the South line of the said 0.15-acre lot to an iron pin, said iron pin being the point of beginning for the tract of land herein described:

Thence, continuing along the South line of the said 0.15-acre lot, North 73 degrees 15 minutes East a distance of 12 feet to a point in the South line of the said 0.15-acre lot; thence South 16 degrees 37 minutes 25 seconds East a distance of 68.98 feet; thence South 73 degrees 13 minutes 25 seconds West a distance of 12 feet to an iron pin at the Southeast corner of a 0.0434-acre tract conveyed to Dale R. Newell and Marcia A. Newell in Book 30, Page 966 of the Official Records of Athens County; thence North 16 degrees 37 minutes 25 seconds West a distance of 68.98 feet along the East line of the 0.0434-acre lot to the point of beginning, containing 0.02 acres, more or less.

This description was prepared by Terry A. Krasko, Ohio Professional Surveyor No. 6973, based upon a survey made by John Branner, Ohio Professional Surveyor No. 6805, made in July, 1987. Basis of bearing was made upon the same survey.

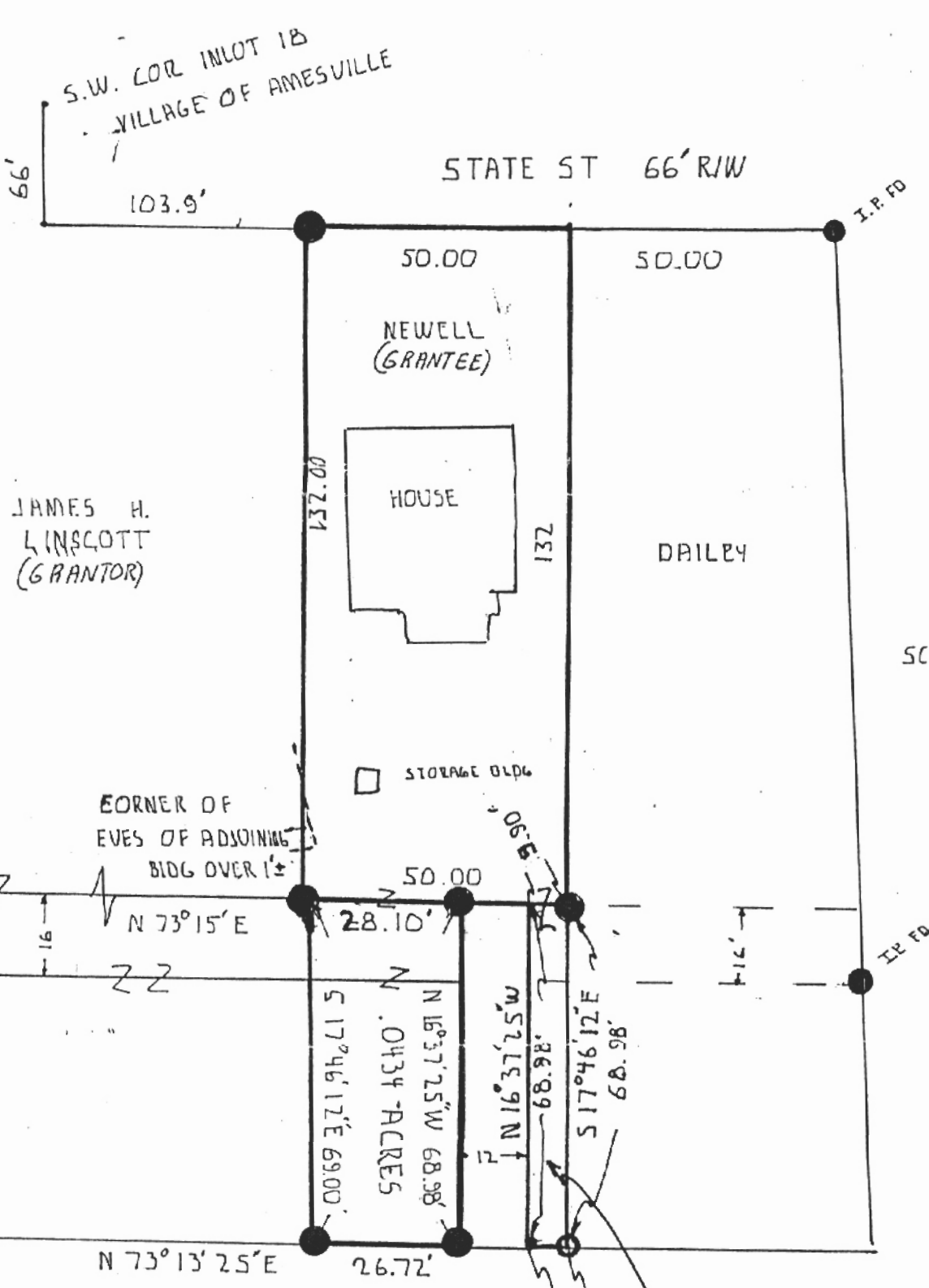


Terry A. Krasko
Ohio Professional Surveyor No. 6973

Description checked for
Mathematical Accuracy
ATHENS COUNTY
ENGINEER'S OFFICE

BY: S. Blause
DATE: 8-28-98

AMS #3



SCALE: 1"=30'
 (North arrow pointing up)

0.017 ACRES
 TRANSFER BETWEEN
 ADJOINING OWNERS

SURVEY OF A 0.017 ACRE TRACT
 IN THE VILLAGE OF AMESVILLE
 AMES TOWNSHIP ATHENS CO. O.
 - SURVEYED JULY 1987

John M. Branner
 JOHN M. BRANNER P.S. 6805
 12500 N. PEACH RIDGE RD
 ATHENS OHIO 614-592-5778



2

Database opened: Friday, August 28, 1998 1:57 pm.

Assigned point

1	5000.00000	5000.00000	0.000
Start			
1	5000.00000	5000.00000	0.000
Raw: n73.1500e	12.00		
TR N 73°15'00.0" E	12.000		
2	5003.45836	5011.49086	0.000
Raw: s16.3725e	68.98		
TR S 16°37'25.0" E	68.980		
3	4937.36139	5031.22488	0.000
Raw: s73.1325w	12.00		
TR S 73°13'25.0" W	12.000		
4	4933.89774	5019.73562	0.000
Raw: n16.3725w	68.98		
TR N 16°37'25.0" W	68.980		
5	4999.99471	5000.00159	0.000
IN N 16°45'47.5" W	0.006		
1	5000.00000	5000.00000	0.000

Area = 827.790 Sq. Feet or 0.019 Acres

2	4999.99471	2000.00128	0.000
TR N 16°37'25.0" W	68.980		
RAW: n16.3725w	68.98		
4	4933.89774	2026.13285	0.000
TR S 73°13'25.0" W	12.000		
RAW: s73.1325w	12.00		
3	4937.36139	2031.22488	0.000
TR S 16°37'25.0" E	68.980		
RAW: s16.3725e	68.98		
5	2003.42838	2011.48088	0.000
TR N 13°12'00.0" E	15.000		
RAW: n13.1200e	15.00		
1	2000.00000	2000.00000	0.000
Start			
1	2000.00000	2000.00000	0.000
Assigned point			

Database opened: Friday, August 28, 1998 1:57 pm.

Point Direction Distance Molding Easting Elevation

File Name: Untitled

Registered to: ATHENS COUNTY ENGINEERS

Survey 880315-Σ-0315

Friday, August 28, 1998 3:03 pm

Page 1

3

Point	Direction	Distance	Northing	Easting	Elevation
-------	-----------	----------	----------	---------	-----------

Database opened: Friday, August 28, 1998 1:57 pm.

Assigned point

1			5000.00000	5000.00000	0.000
Start					
1			5000.00000	5000.00000	0.000
Raw:	n73.1500e	12.00			
TR	N 73°15'00.0" E	12.000			
2			5003.45836	5011.49086	0.000
Raw:	s16.3725e	68.98			
TR	S 16°37'25.0" E	68.980			
3			4937.36139	5031.22488	0.000
Raw:	s73.1325w	12.00			
TR	S 73°13'25.0" W	12.000			
4			4933.89774	5019.73562	0.000
Raw:	n16.3725w	68.98			
TR	N 16°37'25.0" W	68.980			
5			4999.99471	5000.00159	0.000

WGS 84 datum

1		2000.00000	2000.00000	0.000
Raw:	N 16°37'25.0" E	12.000		
2		5003.45836	5011.49086	0.000
Raw:	S 16°37'25.0" E	68.980		
3		4937.36139	5031.22488	0.000
Raw:	S 73°13'25.0" W	12.000		
4		4933.89774	5019.73562	0.000
Raw:	N 16°37'25.0" W	68.980		
5		2003.42839	2011.49086	0.000
Raw:	N 33°12'00.0" E	12.000		
6		5003.42839	5011.49086	0.000
Raw:	N 33°12'00.0" E	12.000		
7		2000.00000	2000.00000	0.000
8		2000.00000	2000.00000	0.000

Database opened: Friday, August 28, 1998 1:57 pm

4