

DESCRIPTION OF A 18.662 ACRE TRACT

Situated in Section 31, Town 6, Range 13, Ames Township, Athens County Ohio, and being part of a 74.92 acre tract as described in Volume 203, Page 560, Athens County Deed Records, and being more particularly described as follows:

Beginning for reference at the Northwest corner of the Southwest Quarter of Section 31; thence the following courses:

S 86° 04' East, 2568.07' along the North line of said Southwest Quarter (Half section line) to a point;
Thence, South 3° 57' West, 17.35' to an iron pin;
Thence, South 88° 25' 27" East, 162.29' to a point in the centerline of Township Road 215;
Thence, continuing along said road South 38° 41' East, 42.73' to a point;
Thence, South 47° 47' East, 66.02' to an iron pin;
Thence, South 64° 45' 42" East, 221.31' to an iron pin;
Thence, South 74° 20' East, 408.99' to a railroad spike,

Said railroad spike being the Northeast corner of an 8.00 acre tract described in Volume 331, Page 871, Athens County Deed Records; said railroad spike also being the true point of beginning for the tract of land herein described:

Thence, South 74° 20' East, 34.00' to an iron pin;
Thence, South 55° 06' 59" East, 139.48' to an iron pin;
Thence, leaving said township road North 45° 26' East, 52.89' to an iron pin;
Thence, North 5° 14' East, 270.46' to an iron pin, passing an iron pin at 193.03';
Thence, South 84° 02' 20" East, 539.14' to an iron pin;
Thence, South 5° 17' 20" West, 553.60' to an iron pin, passing iron pins at 278.60' and 453.60';
Thence, South 74° 26' 40" West, 322.07' an iron pin;
Thence, North 64° 20' 30" West, 255.08' to a point in Township road 215, and passing an iron pin at 225.08';
Thence, along the center of said township road South 4° 51' 30" West, 111.91' to a point;
Thence, Continuing along said road South 5° 21' West, 272.95' to an iron pin; passing a railroad spike at 252.95';
Thence South 4° 15' West, 173.39' to a point;
Thence, south 0° 19' 30" East, 204.78' to a point;
Thence, leaving said township road North 85° 56' West, 851.96' to an iron pin, passing an iron pin at 25.00';
Thence, North 8° 10' 59" East, 458.21' to an iron pin, passing an iron pin at 229.10';
Thence, South 74° 20' East, 564.50' to an iron pin;
Thence, North 9° 52' 30" East, 776.60', to a railroad spike in the center of Township Road 215, the point of beginning and containing 18.662 acres.

Subject to all legal rights of way and easements of records.

Prepared BY:

William M. Watkins
Registered Surveyor #5216

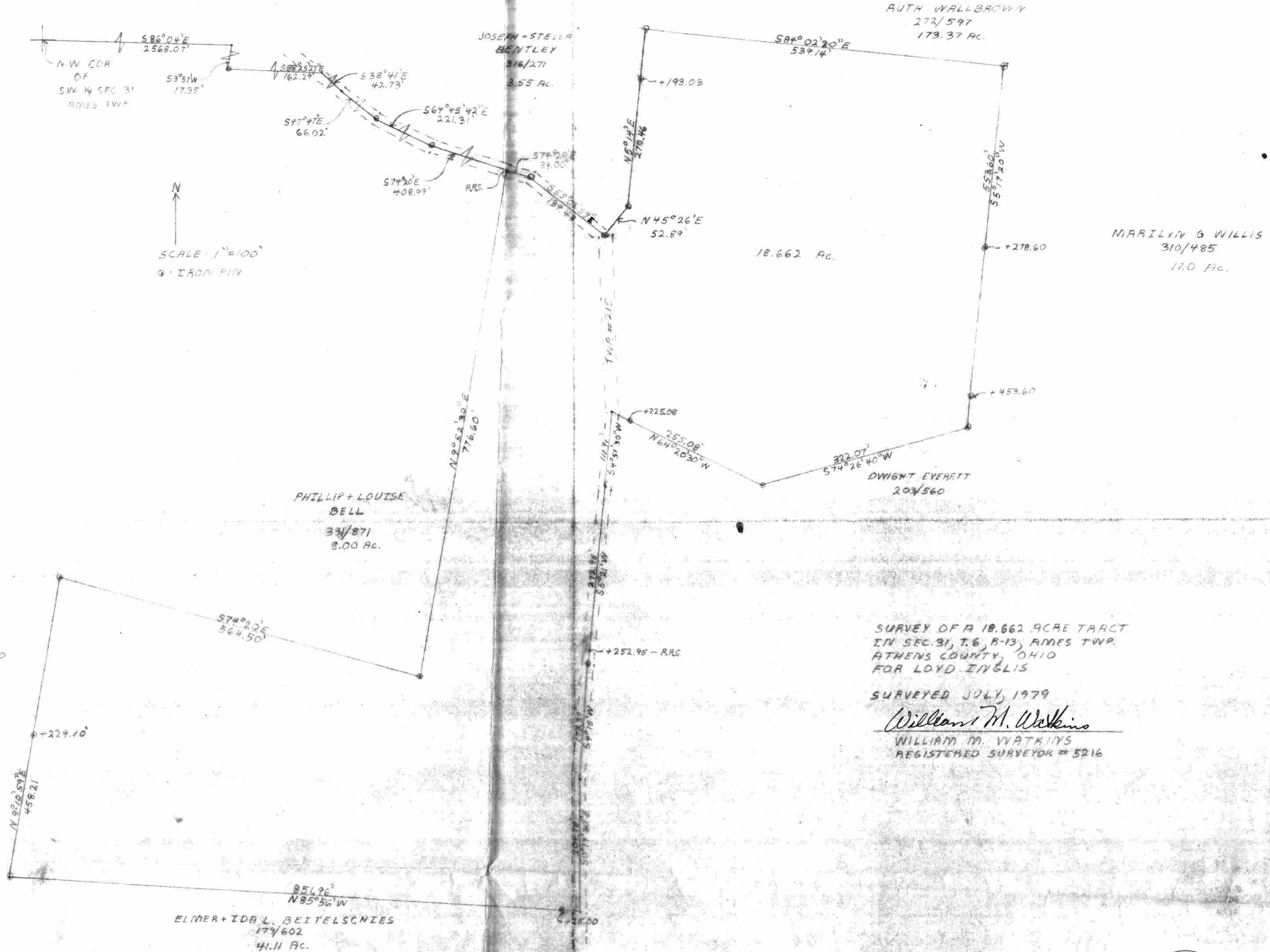
Description checked for
Mathematical Accuracy
ATHENS COUNTY
ENGINEER'S OFFICE

BY: *Charles M. ...*
DATE: 8-14-79

18

Sec 31

AMS # 31



N

SCALE: 1" = 100'

Q - IRON PIN

SURVEY OF A 18.662 ACRE TRACT
 IN SEC. 31, T.6, R-13, AMES TWP.
 ATHENS COUNTY, OHIO
 FOR LOYD INGLIS

SURVEYED JULY, 1979

William M. Watkins
 WILLIAM M. WATKINS
 REGISTERED SURVEYOR # 5216

197



