

BRANNER SURVEYING

MEMBER-PROFESSIONAL LAND SURVEYORS OF OHIO

12500 N. PEACH RIDGE ROAD
ATHENS, OHIO 45701

JOHN M. BRANNER
Registered Land Surveyor

DESCRIPTION OF A 5.011 ACRE TRACT

TELEPHONE
(614) 592-5778

Situated in Section 32, T. 6, R. 13, Ames Township, Athens County, Ohio and being a part of a 11.25 acre tract described in Volume 192, Page 57, Official Deed Records of Athens County and being more particularly described as follows;

Commencing at a found stone Bearing South 1 degree 54 minutes 31 seconds West a distance of 1329.21 feet from the North-east corner of Section 32,
thence, South 1 degree 54 minutes 31 seconds West, a distance of 704.62 feet to a point;
thence, North 88 degrees 59 minutes 57 seconds West, a distance of 436.04 feet to a 24 inch tree, said point being the POINT OF BEGINNING;
thence, South 1 degree 36 minutes 11 seconds West, a distance of 624.07 feet to a point in County road 34, passing an iron pin set at 604.07 feet;
thence, following said road, North 78 degrees 52 minutes 11 seconds West, a distance of 97.31 feet to a point;
thence, North 84 degrees 14 minutes 16 seconds West, a distance of 89.82 feet to a point;
thence, North 85 degrees 30 minutes 57 seconds West, a distance of 139.99 feet to a point;
thence, leaving said road, North 5 degrees 34 minutes 26 seconds West, a distance of 594.87 feet to an iron pin set;
thence, South 88 degrees 59 minutes 57 seconds East, a distance of 399.71 feet to the POINT OF BEGINNING and containing 5.011 acres.

Subject to all easements and right of way of record.
All iron pins set are 5/8 inch by 30 inch long rebar.

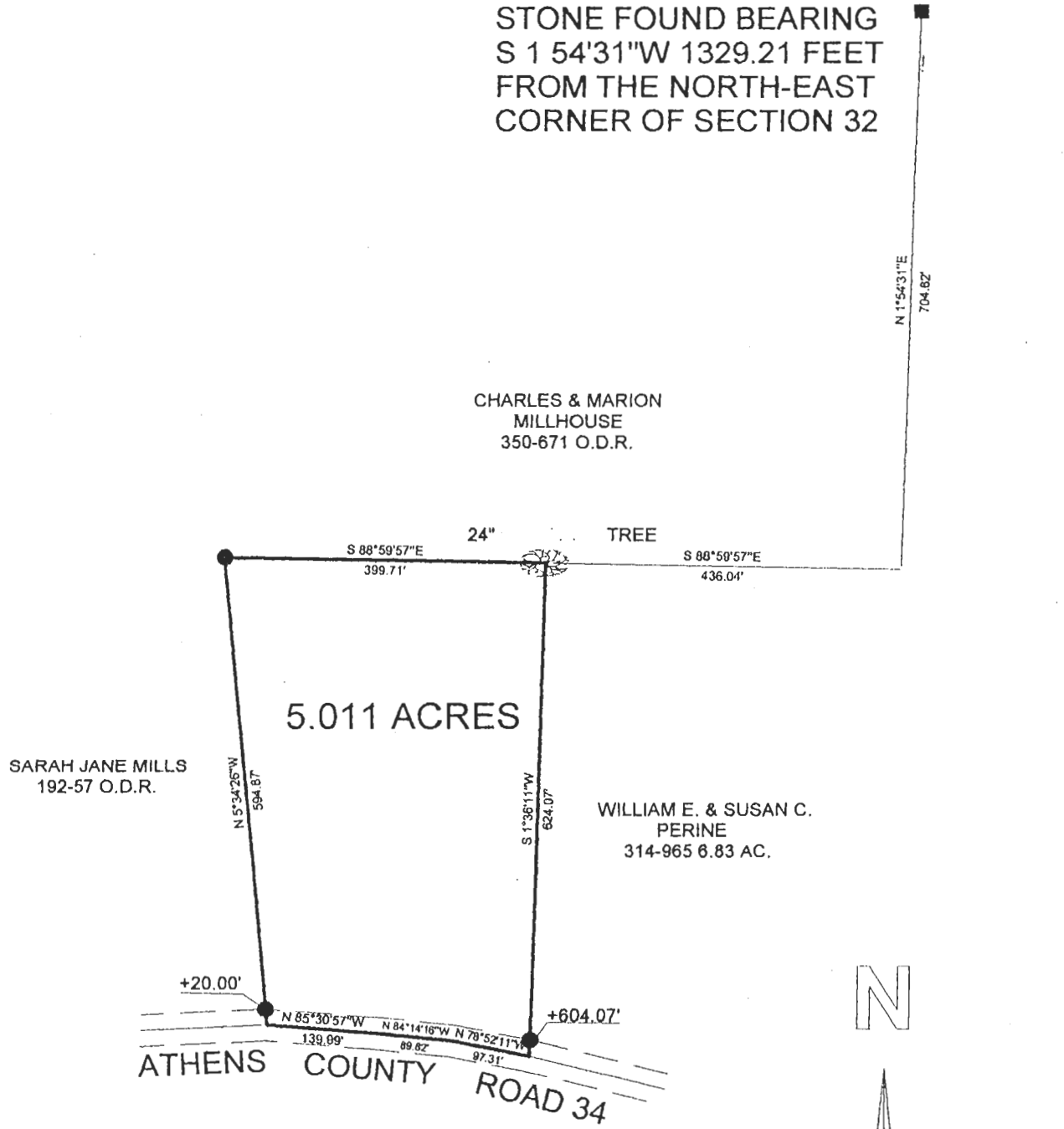
The above description is based on a field survey completed June 1997 by John M. Branner P.S. 6805

Description checked for
Mathematical Accuracy
ATHENS COUNTY
ENGINEER'S OFFICE
BY: Donna McLean
DATE: 6-12-97

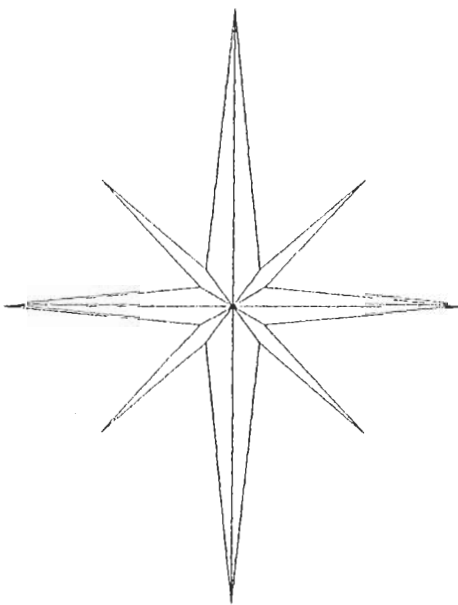
Owner Twp Sect 32

9

STONE FOUND BEARING
S 1 54'31"W 1329.21 FEET
FROM THE NORTH-EAST
CORNER OF SECTION 32

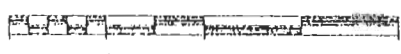


N



SURVEY OF A 5.011 ACRE TRACT
SECTION 32, T. 6, R. 13, AMES TWP.,
ATHENS COUNTY, OHIO
SURVEYED JUNE 1997

BY: JOHN M. BRANNER P.S. 6805
12500 N. PEACH RIDGE RD.
ATHENS, OHIO 45701
(614) 592-5778



1 INCH = 200 FEET

- = IRON PIN SET
- = IRON PIN FOUND

BEARINGS ARE BASED ON
A 12.50 ACRE SURVEY AND
ARE USED TO DENOTE
ANGLES ONLY

DATE: 6-12-97
BY: *John M. Branner*
ENGINEER'S OFFICE
ATHENS COUNTY
Mathematical Accuracy
Description checked for

10