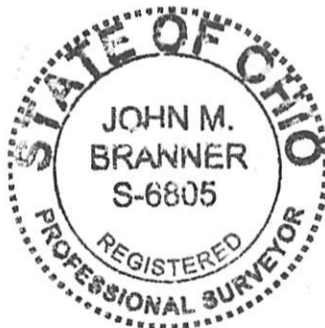


DESCRIPTION OF A 6.736 ACRE TRACT

Situated in Section 32, T. 6, R.13, Ames Township, Athens County, Ohio and being parts of the Jeffrey Allen Bush 5.8708 acre tract as described in Volume 71, Page 981 of the Official Records of Athens County and part of the Joe and Beverly Lucas Tract Volume 324, Page 67 of the Deed Records of Athens County and being more particularly described as follows:

Beginning at an iron pin found at the Northerly most corner of Bush (71-981), said pin calculated to bear South 58 degrees 10 minutes West, 2880 feet more or less from the North-east corner of Section 32;
Thence, along new lines running through Lucas (324-67 D.R.),
S 73° 32' 6" E, 240.66 feet to an iron pin set near an existing utility pole
S 34° 31' 8" W, 544.60 feet to an iron pin set;
S 11° 26' 29" W , 610.20 feet to a point in Dutch Creek Road, passing an iron pin set at 508.36 feet;
Thence, with said road:
N 61° 21' 19" W, 95.56 feet;
N 59° 58' 34" W, 57.97 feet;
Thence, leaving said road and along a new line running through (Lucas (324-67 D.R.) and Bush (71-981 O.R.);
N 0° 38' 29" E, 876.79 feet to a point in the North-line of Bush (71-981 O.R.), passing iron pins set at 115.01 feet and 622.66 feet;
Thence , along said North-line and the south-line of Temple(379-539 O.R.)
N 63° 10' 3" E, 362.10 feet to the point of beginning and containing 6.736 acres of which 3.66 acres are out of Bush (71-981 O.R.) and 3.076 acres are out of Lucas (324-67 D.R.)
Subject to all easements and rights of way of record
Iron pins set are 5/8" by 30 " rebar w/ plastic I.D. Cap stamped "Branner P.S. 6805"
Bearings are Grid North, N.A.D. 83
The above description is based on a field survey completed October 2014 by
John M. Branner P.S. 6805

John M. Branner

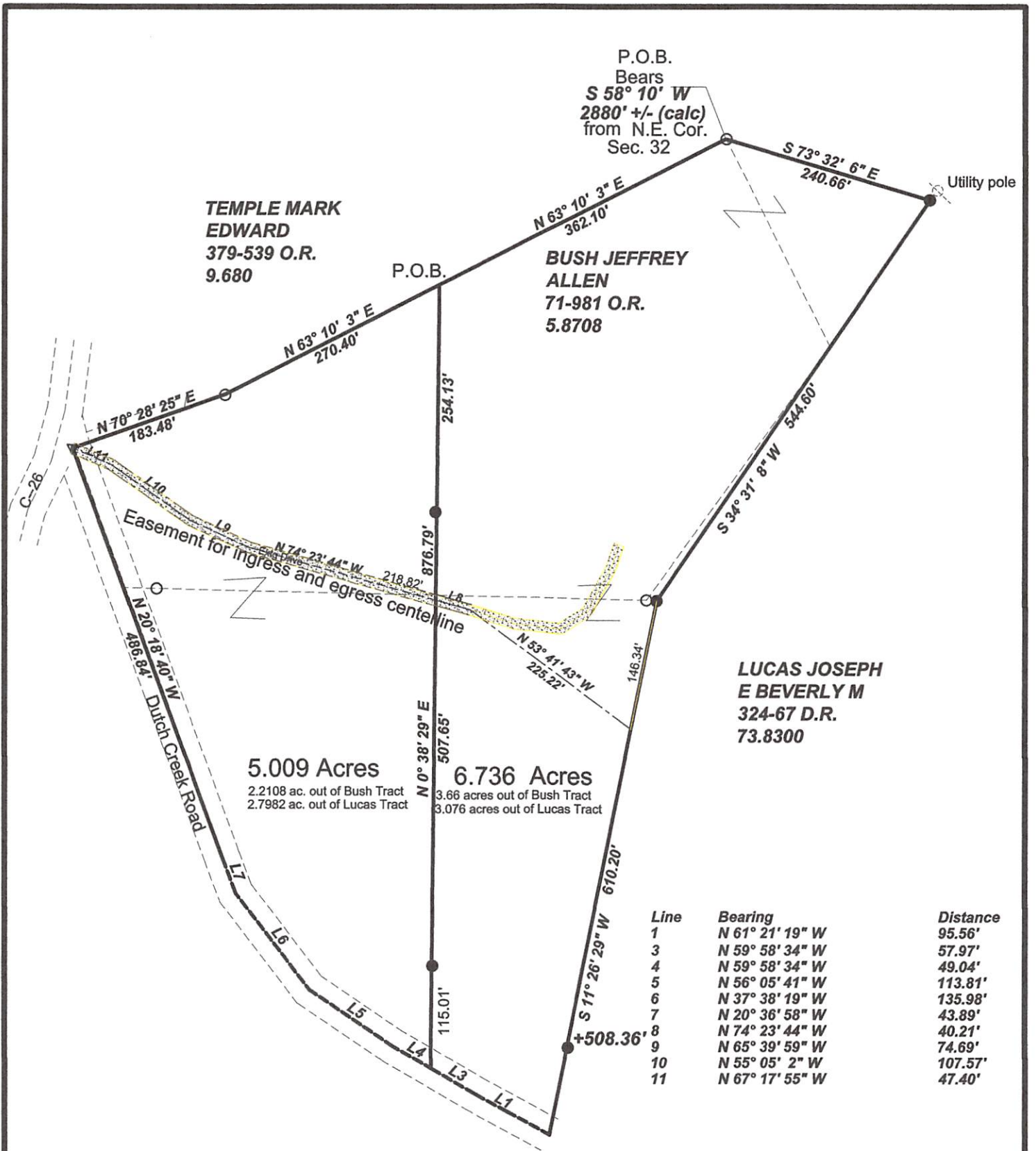


Description Checked for
Mathematical Accuracy
Athens County
ENGINEER'S OFFICE
BY: *Beverly Williams*
DATE: 10/23/14

Legal Description Pre-Approval
APPROVED
All transfers are subject to
Athens County Conveyance Standards

OCT 27 2014

Jill Thompson
Athens County Auditor



Survey of Two Tracts in
Section 32, T.6, R.13,
Ames Township,
Athens County, Ohio

Surveyed Oct. 2014

John M. Branner P.S. 6805
62 East First St. The Plains, Oh.
740-541-0350

Description Checked for
Mathematical Accuracy
Athens County
ENGINEER'S OFFICE

BY: Brannan Williams
DATE: 10/23/14



Scale 1 inch = 150 feet
 ● = iron pin set 5/8"x30" rebarw/ plastic I.D. cap
 ▽ = railroad spike set
 ○ = iron pin found
 Bearings : N.A.D. 83 Grid North
 Ref. Docs. : Tax Plat-deeds

John M. Branner

