

BRANNER SURVEYING

MEMBER-PROFESSIONAL LAND SURVEYORS OF OHIO

12500 N. PEACH RIDGE ROAD
ATHENS, OHIO 45701

JOHN M. BRANNER
Registered Land Surveyor

TELEPHONE
(614) 592-5778

Situated in Section ³² 34, T. 6, R.13, Ames Township, Athens County, Ohio and being more particularly described as follows

Commencing at the South-east corner of Section 32,, thence, North, 20 chains; thence, est 442 feet (deed); thence, North 197.71 feet to a fence corner tree and being the point of beginning for the tract of land herein described:

thence North 83 degrees 39 minutes 19 seconds West, a distance of 498.98 feet to an iron pin set;
 thence South 87 degrees 00 minutes 57 seconds West, a distance of 1360.54 feet to a fence corner;
 thence, along an existing fence, North 21 degrees 26 minutes 02 seconds East, a distance of 445.28 feet to a fence corner;
 thence, continuing along an existing fence, North 13 degrees 25 minutes 15 seconds East, a distance of 283.57 feet to a point in County Road 34;
 thence, along said road South 87 degrees 51 minutes 18 seconds East, a distance of 80.55 feet;
 thence North 80 degrees 17 minutes 00 seconds East, a distance of 199.42 feet;
 thence North 66 degrees 10 minutes 30 seconds East, a distance of 117.38 feet;
 thence North 74 degrees 17 minutes 56 seconds East, a distance of 65.70 feet;
 thence North 74 degrees 05 minutes 52 seconds East, a distance of 157.30 feet;
 thence North 84 degrees 33 minutes 36 seconds East, a distance of 83.44 feet;
 thence North 81 degrees 36 minutes 03 seconds East, a distance of 164.64 feet;
 thence North 88 degrees 44 minutes 59 seconds East, a distance of 259.96 feet;
 thence North 87 degrees 17 minutes 25 seconds East, a distance of 141.17 feet;
 thence South 88 degrees 56 minutes 50 seconds East, a distance of 284.00 feet;
 thence South 71 degrees 25 minutes 50 seconds East, a distance of 101.61 feet;
 thence, leaving said road, South, a distance of 820.29 feet to the POINT OF BEGINNING; said described tract containing 30.53 acres.

Subject to all easements and rights of way of record.



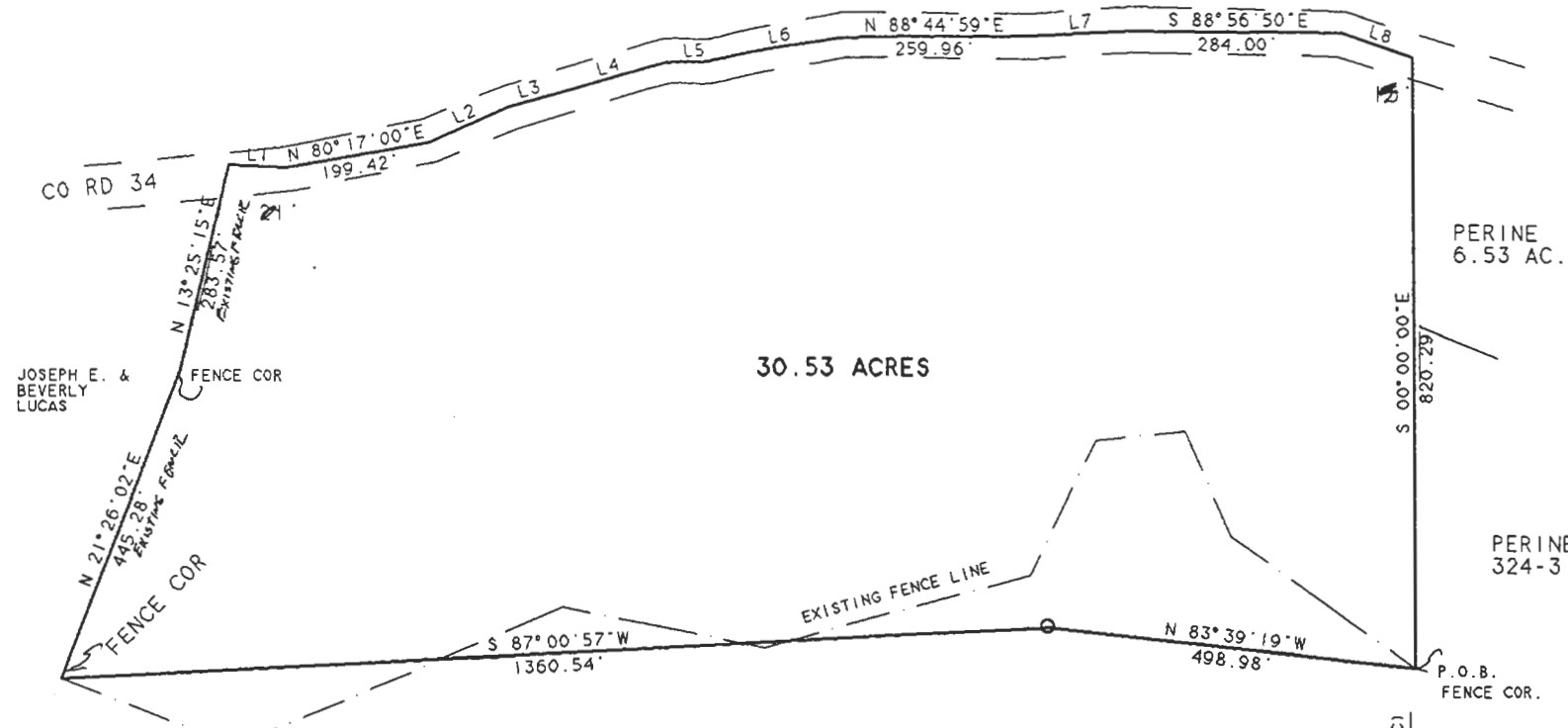
John M. Branner
 John M. Branner P.S. 6805

Description checked for
 Mathematical Accuracy
 ATHENS COUNTY
 ENGINEER'S OFFICE
 BY: *Donna*
 DATE: 6-23-95

65

Ames Twp #34

67



30.53 ACRES

PERINE
6.53 AC.

PERINE
324-317

JOSEPH E. &
BEVERLY
LUCAS

JOSEPH E. &
BEVERLY LUCAS
324-67

SURVEY OF A 30.53 ACRE TRACT IN
SECTION 32, T.6, R.13, AMES TOWNSHIP
ATHENS COUNTY, OHIO
SURVEYED JUNE 1995

John M. Branner
JOHN M. BRANNER P.S. 6805
12500 N. PEACH RIDGE ROAD
ATHENS, OHIO 614-592.5778



SCALE 1 INCH = 200 FEET
○ - IRON PIN SET

ASSUMED BEARINGS
IRON PINS SET ARE 5/8" X 30 REBAR



LINE	BEARING	DISTANCE
L 1	S 87° 51' 18" E	80.55'
L 2	N 66° 10' 30" E	117.38'
L 3	N 74° 17' 56" E	65.70'
L 4	N 74° 05' 51" E	157.30'
L 5	N 84° 33' 36" E	83.44'
L 6	N 81° 36' 03" E	164.64'
L 7	N 87° 17' 25" E	141.17'
L 8	S 71° 25' 50" E	101.61'

NORTH 197.71 (CALC)

