

BRANNER SURVEYING

MEMBER-PROFESSIONAL LAND SURVEYORS OF OHIO

12500 N. PEACH RIDGE ROAD
ATHENS, OHIO 45701

JOHN M. BRANNER
Registered Land Surveyor

TELEPHONE
(614) 592-5778

DESCRIPTION OF A 4.067 ACRE TRACT

Commencing at the South-west corner of Section 32, thence, East, 18.4 chains to a point; thence, North 21 Degrees 54 Minutes 09 Seconds West, 1328.85 feet to Grantor's North-west corner; thence, South 89 Degrees 04 Minutes 25 Seconds East, 1418.20 feet to an iron pin set, said pin being the POINT OF BEGINNING; Thence South 89 degrees 04 minutes 37 seconds East, a distance of 401.84 feet to an iron pin found; thence South 1 degrees 17 minutes 46 seconds West, a distance of 313.88 feet to an iron pin found; thence South 26 degrees 39 minutes 26 seconds East, a distance of 295.23 feet to an iron pin found; thence North 63 degrees 20 minutes 34 seconds East, a distance of 23.42 feet to a point in County Road 26; thence, along said road, South 5 degrees 36 minutes 20 seconds East, a distance of 85.70 feet; thence, South 22 degrees 17 minutes 14 seconds West, a distance of 71.68 feet; thence South 41 degrees 23 minutes 38 seconds West, a distance of 52.65 feet; thence South 55 degrees 13 minutes 20 seconds West, a distance of 93.96 feet; thence, leaving said road, North 19 degrees 43 minutes 22 seconds West, a distance of 378.78 feet to an iron pin set, passing through a power pole at 42.2 feet; thence North 32 degrees 04 minutes 49 seconds West, a distance of 544.97 feet to the POINT OF BEGINNING; said described tract containing 4.067 acres.
Subject to all easements and rights of way of record.


JOHN M. BRANNER P.S. 6805

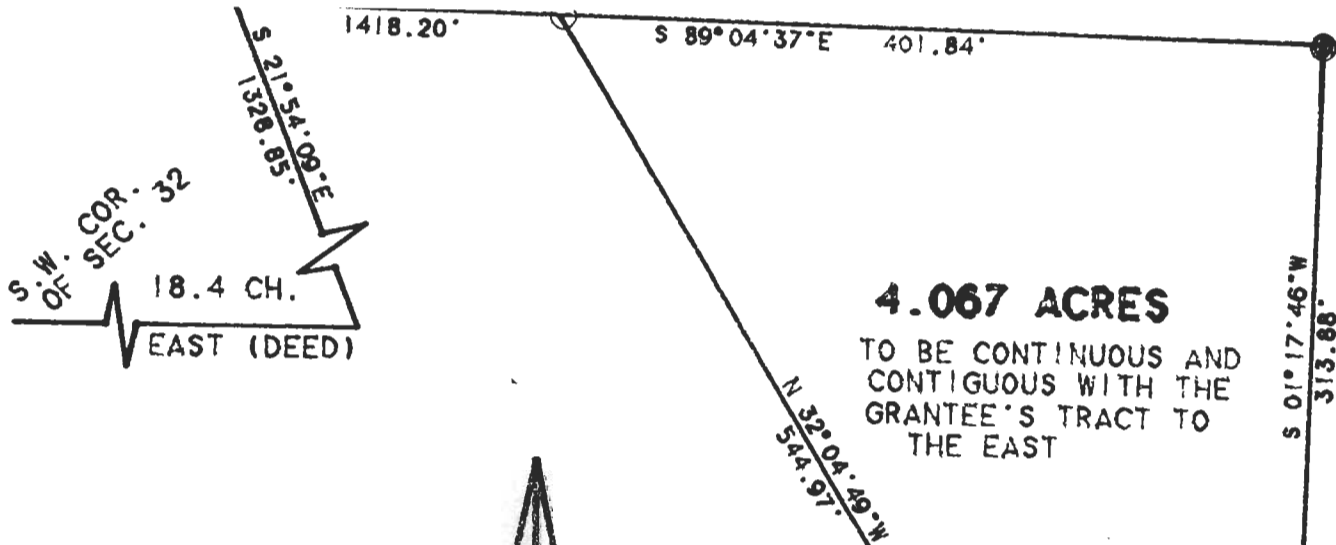
Note: The above described tract is to be continuous and contiguous with Grantee's tract to the East.



Description checked for
Mathematical Accuracy
ATHENS COUNTY
ENGINEER'S OFFICE
BY: S. Blause
DATE: 6-18-93

Amos # 32

77



4.067 ACRES
 TO BE CONTINUOUS AND
 CONTIGUOUS WITH THE
 GRANTEE'S TRACT TO
 THE EAST

LANG

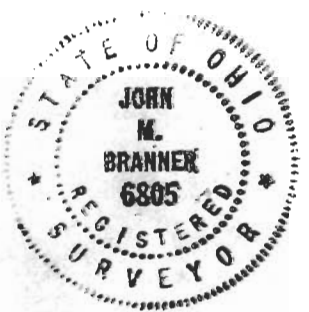
LINE	BEARING	DISTANCE
L1	N 63 20 34 E	23.42'
L2	S 05 36 20 E	85.70'
L3	S 22 17 14 W	71.68'
L4	S 41 23 38 W	52.65'
L5	S 55 13 20 W	93.96'



SCALE 1 INCH = 100 FEET
 ○ - IRON PIN SET
 ● - IRON PIN FOUND

SURVEY OF A 4.067 ACRE TRACT
 IN SECTION 32, T.6.R.13. AMES
 TOWNSHIP, ATHENS COUNTY, OHIO
 SURVEYED JUNE 1993

John M. Branner
 JOHN M. BRANNER P.S. 6805
 12500 N. PEACH RIDGE ROAD
 ATHENS, OHIO 614-592-5778



LOCKER

42.2'

POWER POLE

C.R. 26

