

OCT 27 2014

Jill Thompson  
Athens County Auditor

Description of a 10.15 Acre Tract

Situated in Sections 33 and 34 of T.9, R.13, Ames Township, Athens County, Ohio and being a part of a 19.394 acre tract as described in Volume 455, Page 1467 of the Official Records of Athens County and being more particularly described as follows:

Beginning at an iron pin set in the West-line of Fraction 24, said pin bears North 03 degrees 46 minutes 37 seconds East, 1030.86 feet (calculated) from the South-west corner of Fraction 24, and an iron pin found at the South-east corner of a 0.884 acre tract bears South 03 degrees 46 minutes 37 seconds West, 565.05 feet;

Thence, along new lines created by this survey:

N 87° 23' 47" W, 402.25 feet to an iron pin set;

S 81° 35' 28" W, 581.66 feet to a point in Stella Road, passing an iron pin set at 551.66 feet;

Thence, along said road:

N 3° 49' 54" E, 134.76 feet;

N 7° 36' 49" E, 97.32 feet;

N 5° 56' 2" W, 82.68 feet;

N 23° 37' 40" E, 32.12 feet;

N 38° 18' 19" E, 44.92 feet;

N 51° 57' 46" E, 54.16 feet;

N 65° 33' 49" E, 204.22 feet;

N 49° 27' 39" E, 38.41 feet;

N 42° 43' 50" E, 141.62 feet;

N 62° 40' 0" E, 119.09 feet;

N 78° 01' 35" E, 110.06 feet;

S 86° 23' 49" E, 48.46 feet;

S 65° 29' 17" E, 62.59 feet;

S 47° 52' 45" E, 127.71 feet;

Thence, leaving said road and along the lines of Adelaide Borton (307-793 D.R.)

S 6° 35' 53" W, 319.03 feet to a Black Walnut Tree, passing an iron pin found at 16.29 feet;

S 83° 17' 57" E, 205.74 feet to a point in the West-line of Fraction 24;

S 3° 46' 37" W, 180.21 feet to the point of beginning and containing 10.151 Acres

Subject to all easements and rights of way of record

Iron pins set are 5/8"x30" long rebar with plastic I.D. cap

Bearings are based on Grid North N.A.D. 83

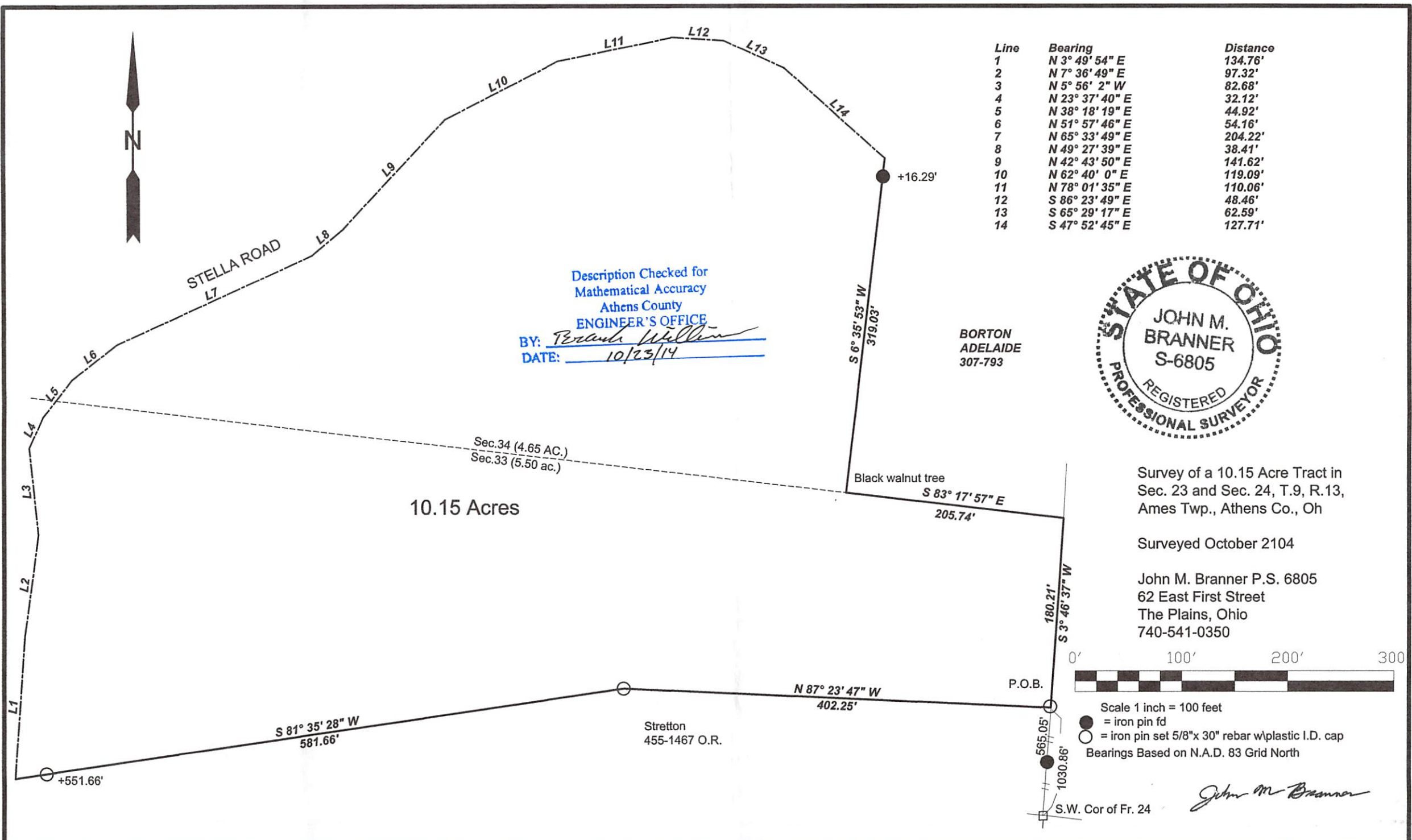
The above description is based on a field survey completed October 2014 by John M. Branner P.S. 6805

*John M. Branner*



Description Checked for  
Mathematical Accuracy  
Athens County  
ENGINEER'S OFFICE

BY: *Frank [Signature]*  
DATE: 10/24/14



Description Checked for  
Mathematical Accuracy  
Athens County  
ENGINEER'S OFFICE  
BY: Bernard Williams  
DATE: 10/23/14

Line	Bearing	Distance
1	N 3° 49' 54" E	134.76'
2	N 7° 36' 49" E	97.32'
3	N 5° 56' 2" W	82.68'
4	N 23° 37' 40" E	32.12'
5	N 38° 18' 19" E	44.92'
6	N 51° 57' 46" E	54.16'
7	N 65° 33' 49" E	204.22'
8	N 49° 27' 39" E	38.41'
9	N 42° 43' 50" E	141.62'
10	N 62° 40' 0" E	119.09'
11	N 78° 01' 35" E	110.06'
12	S 86° 23' 49" E	48.46'
13	S 65° 29' 17" E	62.59'
14	S 47° 52' 45" E	127.71'

BORTON  
ADELAIDE  
307-793



10.15 Acres

Sec. 34 (4.65 AC.)  
Sec. 33 (5.50 ac.)

Black walnut tree  
S 83° 17' 57" E  
205.74'

Survey of a 10.15 Acre Tract in  
Sec. 23 and Sec. 24, T.9, R.13,  
Ames Twp., Athens Co., Oh

Surveyed October 2104

John M. Branner P.S. 6805  
62 East First Street  
The Plains, Ohio  
740-541-0350



Scale 1 inch = 100 feet

- = iron pin fd
- = iron pin set 5/8" x 30" rebar w/plastic I.D. cap

Bearings Based on N.A.D. 83 Grid North

*John M. Branner*

P.O.B.

180.21'  
S 3° 46' 37" W

565.05'  
1030.86'  
S.W. Cor of Fr. 24

N 87° 23' 47" W  
402.25'

Stretton  
455-1467 O.R.

+551.66'

S 81° 35' 28" W  
581.66'

+16.29'

S 6° 35' 53" W  
379.03'