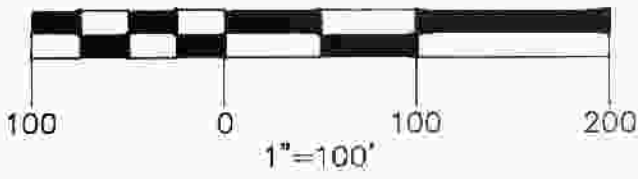
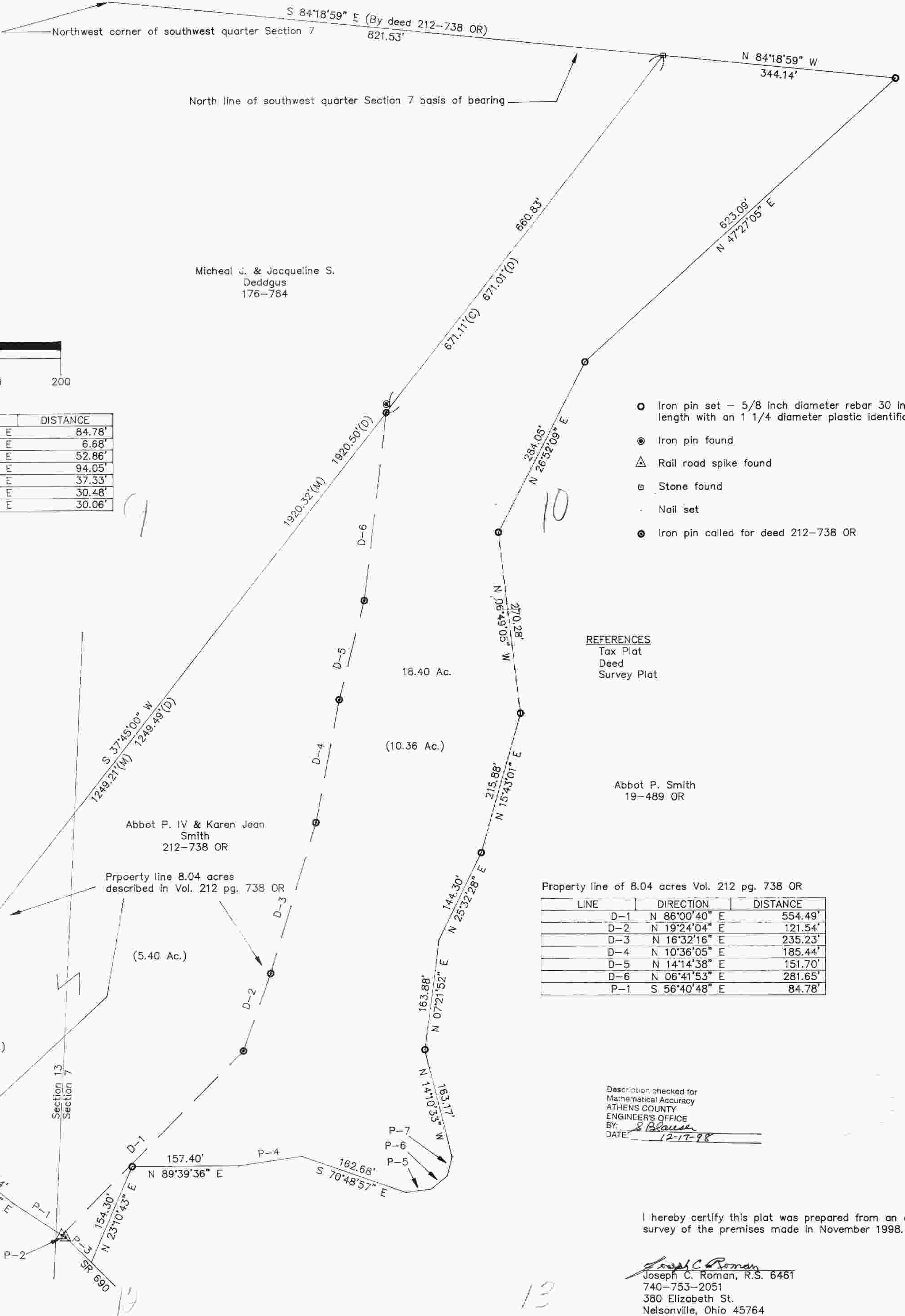


# PLAT OF 18.40 ACRES SECTIONS 7 & 13, TOWNSHIP 6, RANGE 13 AMES TOWNSHIP, ATHENS COUNTY, OHIO

Ray & Lois C. Chadwell  
203-582



LINE	DIRECTION	DISTANCE
P-1	S 56°40'48" E	84.78'
P-2	S 61°34'47" E	6.68'
P-3	S 45°25'12" E	52.86'
P-4	N 81°22'20" E	94.05'
P-5	N 82°02'52" E	37.33'
P-6	N 50°34'19" E	30.48'
P-7	N 14°15'40" E	30.06'



Micheal J. & Jacqueline S. Deddus  
176-784

Abbot P. IV & Karen Jean Smith  
212-738 OR

Property line 8.04 acres described in Vol. 212 pg. 738 OR

- Iron pin set - 5/8 Inch diameter rebar 30 inches in length with an 1 1/4 diameter plastic identification cap
- Iron pin found
- △ Rail road spike found
- ◻ Stone found
- Nail set
- ⊙ Iron pin called for deed 212-738 OR

REFERENCES  
Tax Plat  
Deed  
Survey Plat

Abbot P. Smith  
19-489 OR

Property line of 8.04 acres Vol. 212 pg. 738 OR

LINE	DIRECTION	DISTANCE
D-1	N 86°00'40" E	554.49'
D-2	N 19°24'04" E	121.54'
D-3	N 16°32'16" E	235.23'
D-4	N 10°36'05" E	185.44'
D-5	N 14°14'38" E	151.70'
D-6	N 06°41'53" E	281.65'
P-1	S 56°40'48" E	84.78'

Description checked for  
Mathematical Accuracy  
ATHENS COUNTY  
ENGINEER'S OFFICE  
BY: *J. Blouse*  
DATE: 12-17-98

I hereby certify this plat was prepared from an actual survey of the premises made in November 1998.

*Joseph C. Roman*  
Joseph C. Roman, R.S. 6461  
740-753-2051  
380 Elizabeth St.  
Nelsonville, Ohio 45764

13

14