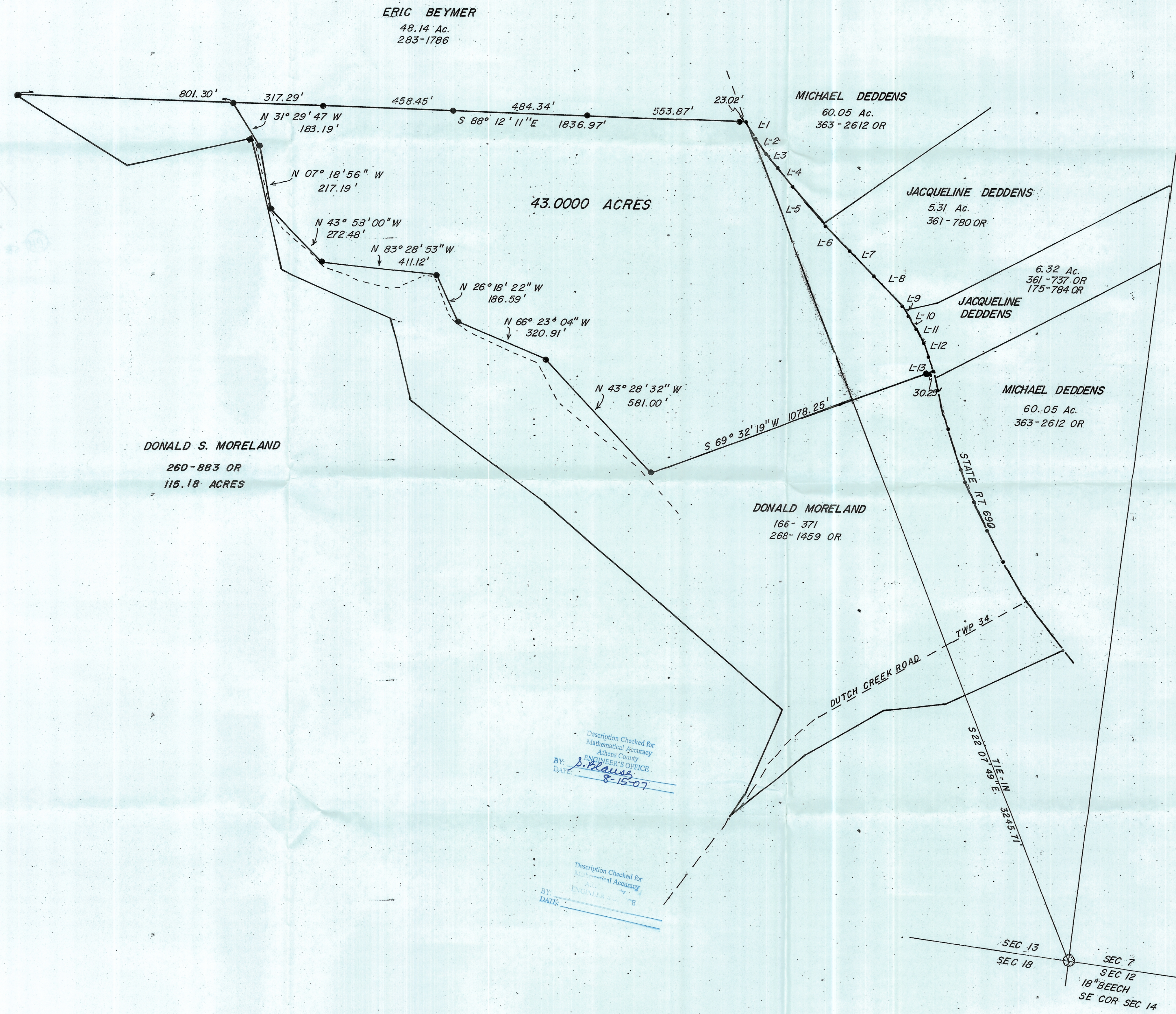


PREPARED FOR
DONALD MORELAND

STATE OF OHIO
ATHENS COUNTY
AMES TOWNSHIP
TOWN 6 RANGE 13
SECTION 13



ASSUMED.

LEGEND

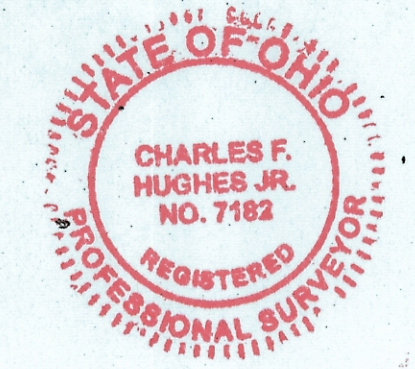
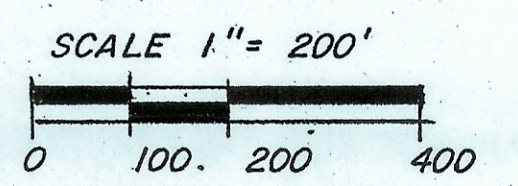
- 5/8 CAPPED REBAR SET
- IRON PIN FOUND
- POINT IN CENTERLINE OF ROAD

Call Table

L-1	S 27° 16' 38" E	75.56'
L-2	S 30° 46' 48" E	62.43'
L-3	S 34° 57' 01" E	69.38'
L-4	S 38° 58' 40" E	72.38'
L-5	S 41° 17' 54" E	198.67'
L-6	S 43° 16' 50" E	118.02'
L-7	S 44° 21' 16" E	118.81'
L-8	S 45° 24' 08" E	120.75'
L-9	S 40° 31' 10" E	78.72'
L-10	S 32° 35' 38" E	56.31'
L-11	S 25° 47' 26" E	55.17'
L-12	S 20° 12' 54" E	56.23'
L-13	S 15° 30' 52" E	5' .84'

REFERENCE:

AMES TAX MAP 13
DEEDS AS LISTED
SURVEY PLAT JOHN BRANNER
JAN. 1994



Description Checked for
Mathematical Accuracy
Athens County
ENGINEER'S OFFICE
BY: *C. Blaus*
DATE: 8-15-07

Description Checked for
Mathematical Accuracy
Athens County
ENGINEER'S OFFICE
BY: _____
DATE: _____

Charles F. Hughes, Jr. 8-29-2007
CHARLES F. HUGHES, JR. DATE
P.S. 7182

CHARLES F. HUGHES, JR. PROFESSIONAL SURVEYOR	
SCALE: 1" = 200'	APPROVED BY: JLH
DATE:	REVISION:
P.O. BOX 216, MINERAL WELLS, WV 26150	
DRAWING NUMBER 1-304-489-9640	DATE 07-0801