

PLAT of Survey

Description Checked for
Mathematical Accuracy
Athens County
ENGINEER'S OFFICE

BY: S. Blauss
DATE: 5-9-07

Situate in Section 18, Township 6,
Range 13, Ohio River Survey,
Ames Twp, Athens County, Ohio

I hereby certify that this Plat
and Notes are correct as
surveyed by me April 2007.

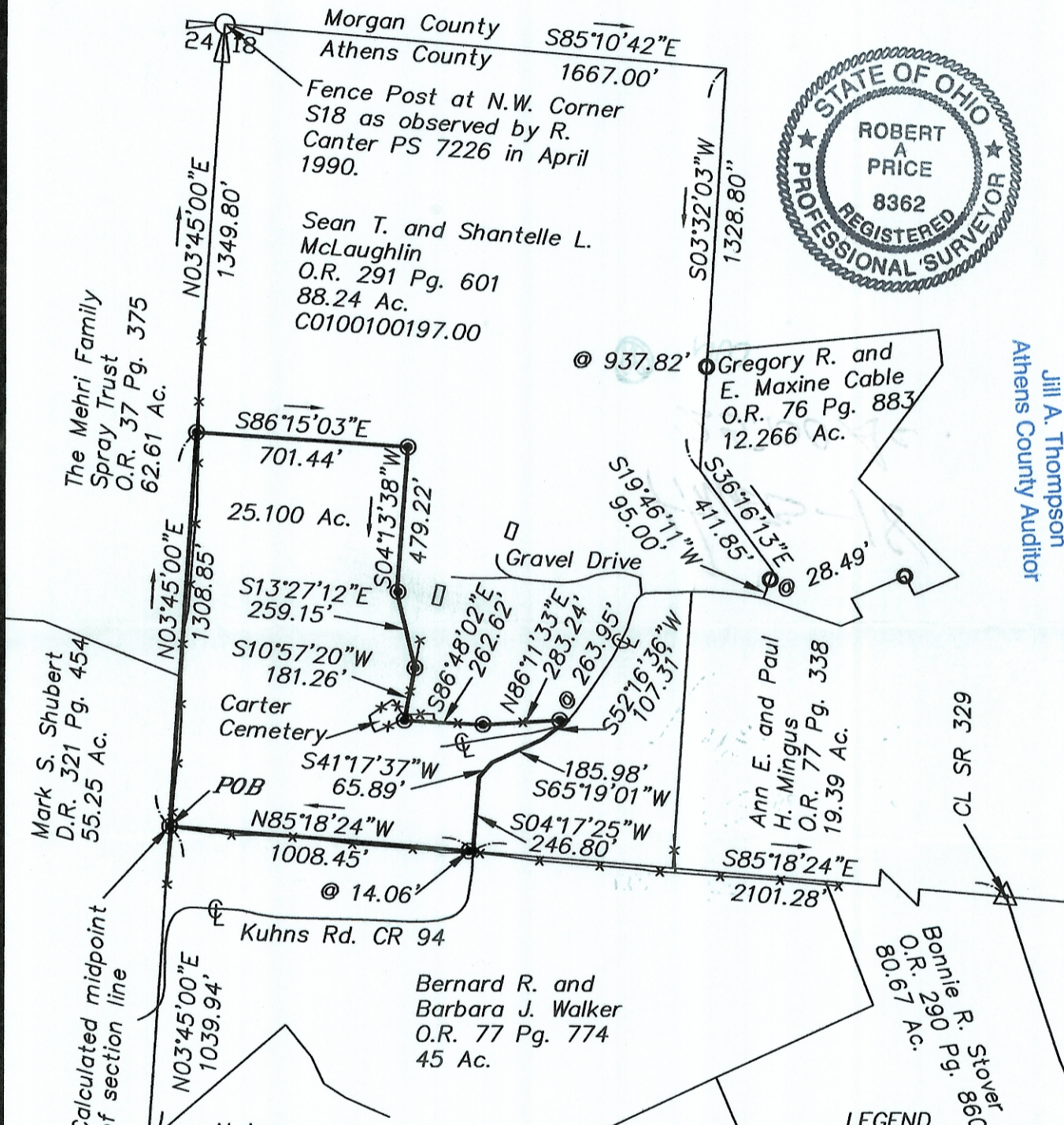


Robert A. Price PS 8362

Being a part of Sean T. McLaughlin's 88.24
Acre parcel as recorded in Official Record
291 Page 601, containing 25.100 Ac.



Registration Approved
 Jill A. Thompson
 Athens County Auditor

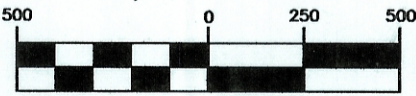


Notes:
Basis of Bearings; the west line of
Section 18 being N 03°45' 00" E.

All Iron Pins Set are 5/8" X 30" rebar
with plastic caps stamped 'PRICE PS
8362'.

References:
Deeds Listed
Tax maps
Ames Twp Outline Map
R. Canter Survey (PS 7226) 04 APR 1990
R. Cannon Survey (PS 5489) 12 MAY 1989
Athens Co Surveys Vol 6 Pg 223

- LEGEND**
- Stone Fd.
 - △ RR Spike Fd.
 - Iron Pin Fd.
 - Iron Pin Set



(IN FEET)
1 inch = 500 ft.

2076.dwg
01 May 2007