

HUGHES LAND SURVEYING

PO BOX 216
MINERAL WELLS, WV 26150
1-304-489-9640

119.7224 Acre Description

Situated in the State of Ohio, Athens County, Ames Township, Township 6 North, Range 13 West, being parts of Sections 2 and 3 and Fraction 3 in Section 9, being a parcel conveyed unto James B. Hayes and C. and K. Investment and Management Co. Inc. as recorded in Official Record 394 on page 244, bounded and described as follows:

Beginning for reference at a point at the southwest corner of Section 3 where a iron pin found at the northeast corner of Sean Dean, OR 170-458 bears N 89 21' 15" E a distance of 69.00 feet; THENCE S 89 21' 15" W a distance of 106.98 feet to a stone found at the northwest corner of Sean Dean, OR 170-458 on the south line of David Starling, Deed Volume 365-351; THENCE along the south line of David Starling, N 90 00' 00" w a distance of 2756.47 feet to a stone found at the southwest corner of David Starling, Deed Volume 365-351; THENCE along the west line of David Starling, Deed Volume 365-351 and the east line of Joseph Mulholland, OR 254-1018, N 00 24' 26" E a distance of 467.94 feet to a stone found at the northwest corner of David Starling, Deed Volume 365-351 and the southwest corner of James Hayes and C. and K. Investment and Management Co. Inc., OR 394-244, where a 12" Hickory, now 26" bears N 01 05' 23" E a distance of 21.78 feet, said stone being the True Point of Beginning for the parcel herein described; THENCE along the east line of Joseph Mulholland, OR 254-1018 and the west line of James Hayes and C. and K. Investment and Management Co. Inc., N 00 05' 56" E a distance of 913.23 feet to a stone found at the northeast corner of James Hayes and C. and K. Investment and Management Co. Inc., OR 394-244 and the southwest corner of Alene King, OR 331-1148, where a 10" Sugar Maple, now 24" bears S 18 22' 27" E a distance of 33.00 feet; THENCE along the north line of James Hayes, OR 394-244 and the south line of Alene King, OR 331-1148, S 90 00' 00" E a distance of 3900.60 feet to a 5/8" capped rebar set, passing a 5/8" capped rebar set on the west side of Jago Road at 3664.57 feet, a 5/8" capped rebar set on the east side of Jago Road at 3701.25 feet; THENCE S 77 25' 00" E a distance of 99.00 feet to a 5/8" capped rebar set; THENCE S 65 05' 00" E a distance of 462.00 feet to a 5/8" capped rebar set; THENCE S 82 55' 00" E a distance of 260.70 feet to a 5/8" capped rebar set, passing a 5/8" capped rebar set at 142.03 feet; THENCE S 77 25' 00" E a distance of 119.28 feet to a point on or near the center of Federal Creek, passing a 5/8" capped rebar set at 84.41 feet; THENCE along or near the center of Federal Creek and the east line of David Starling, Deed Volume 349-801 and Phillip Dean Kasler, Deed Volume 274-477 the following five (5) courses, S 02 06' 06" W a distance of 287.04 feet to a point; THENCE S 30 36' 05" E a distance of 127.01 feet to a point; THENCE S 43 52' 37" E a distance of 89.72 feet to a point; THENCE S 17 11' 05" E a distance of 224.61 feet to a point at the confluence of Federal Creek and Wyatt Creek; THENCE S 15 20' 40" E a distance of 198.34 feet to a point; THENCE

leaving Federal Creek, S 00 31' 47" W a distance of 160.64 feet to a 5/8" capped rebar set at the northeast corner of Robert Withem, Deed Volume 357-415, where a stone found at the southeast corner of Robert Withem bears S 00 31' 47" W a distance of 514.10 feet, passing a 5/8" capped rebar set at 72.06 feet; THENCE along the north line of Robert Withem, Deed Volume 357-415 and OR 335-269, S 69 57' 07" W a distance of 702.50 feet to a point the fell in a active land slip, passing a pipe found at 519.35 feet; THENCE N 88 35' 57" W a distance of 456.99 feet to a 5/8" capped rebar set at the northeast corner of Robert Withem OR 335-269, where a 30" Hickory, now 50" bears S 83 11' 15" E a distance of 42.24 feet, passing a 5/8" capped rebar set at 36.85 feet, THENCE along the west line of Robert Withem, OR 335-591, S 17 49' 53" W a distance of 66.00 feet to a 5/8" capped rebar set at the northeast corner of Tim Mosher, OR 195-591; THENCE along the north line of Tim Mosher, OR 195-591, N 80 20' 07" W a distance of 441.54 feet to a 5/8" capped rebar set; THENCE S 06 45' 07" E a distance of 174.24 feet to a point on the side of the bank of Wyatt Creek; THENCE N 79 40' 07" W a distance of 15.54 feet to a point on or near the center of Wyatt Creek on the east line of Joe Lucas, Deed Volume 298-246 and 133-142; THENCE down Wyatt Creek, N 08 28' 42" W a distance of 13.27 feet to a point; THENCE N 20 58' 47" W a distance of 219.12 feet to a point; THENCE leaving Wyatt Creek N 88 03' 47" W a distance of 206.06 feet to a point in the center of State Route 550, passing a 5/8" capped rebar set at 131.67; THENCE along the center of center of State Route 550, N 48 48' 27" E a distance of 478.71 feet to a point at the southeast corner of Trustees of Ames Township, Deed Volume 259-320; THENCE leaving the center of State Route 550 and along the east line of Trustees of Ames Township, N 30 37' 28" W a distance of 268.17 feet to a iron pin found at the northeast corner of Trustees of Ames Township, Deed Volume 259-320, passing a 5/8" capped rebar set at 30.00 feet and a iron pin found at 152.98 feet; THENCE along the north line of Trustees of Ames Township, N 89 22' 06" W a distance of 642.06 feet to a 5/8" capped rebar set at the northwest corner of Trustees of Ames Township, Deed Volume 259-320 and the northeast corner of David Starlin, Deed Volume 365-351, where a metal fence post found at the northwest corner of the Amesville Cemetery, Deed Volume 180-517 bears S 33 29' 05" E a distance of 221.10 feet; THENCE along the north line of David Starlin, Deed Volume 365-351, S 89 59' 03" W a distance of 2754.78 feet to the Point of Beginning containing 119.7224 acres. There being 5.0244 acres in Section 2, 54.7981 acres in Section 3 and 59.8999 acres in Fraction 3, Section 9.

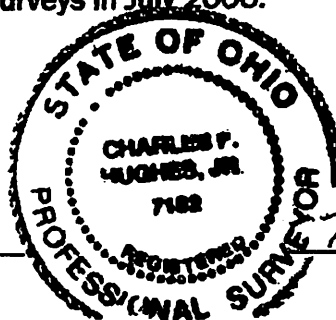
Subject to all legal highways, right of ways, easements, restrictions and reservations of record.

Bearings are based on an assumed meridian and are used to denote horizontal angles only.

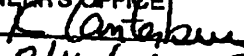
All rebar set are 5/8" X 30" with a plastic cap stamped HUGHES OH 7182 WV 872.

This legal description was prepared by Charles F. Hughes, Jr., Professional Surveyor 7182, based on field surveys in July 2006.


 Charles F. Hughes, Jr., PS 7182



Description checked for
 Mathematical Accuracy
 ATHENS COUNTY
 ENGINEER'S OFFICE

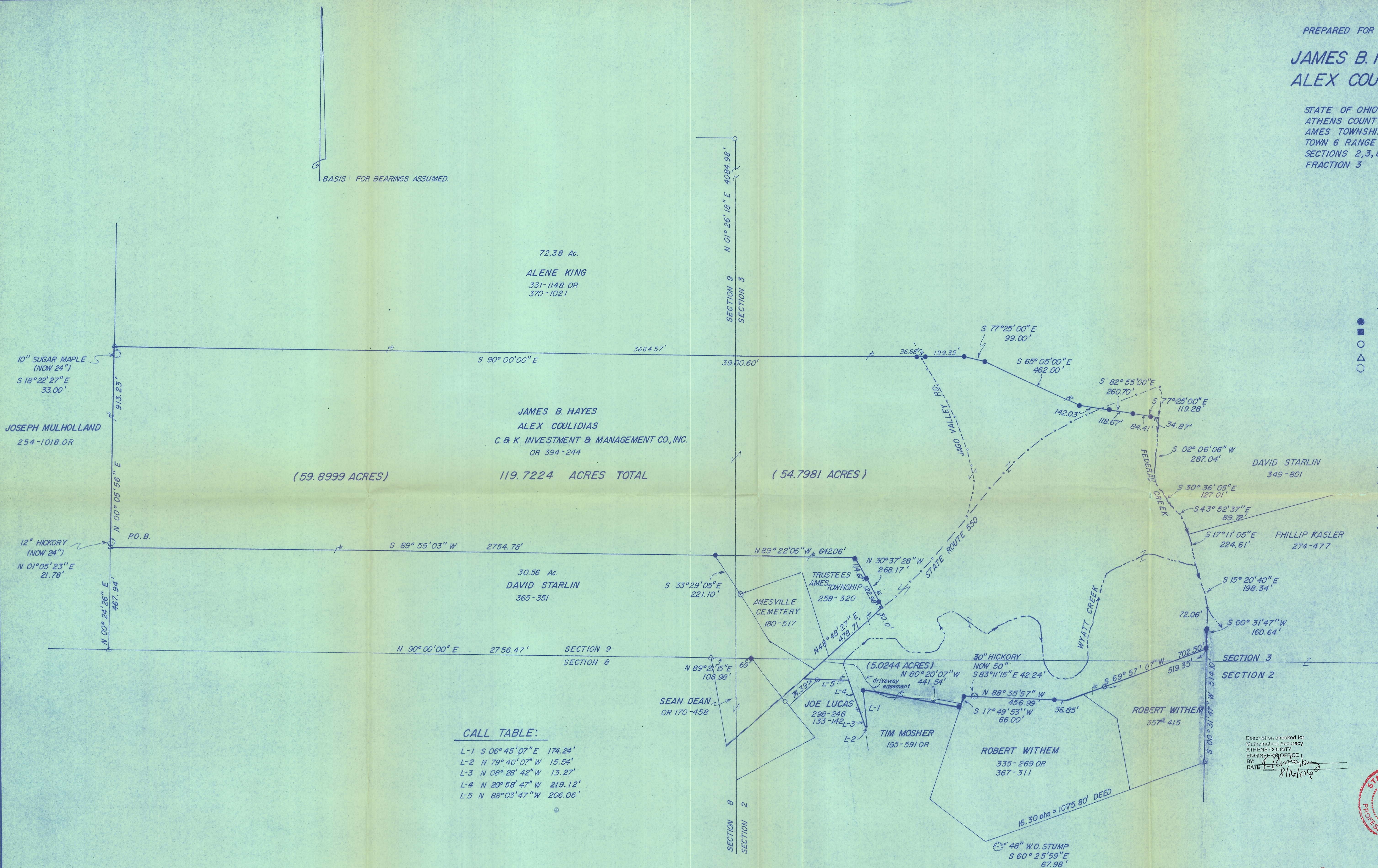
BY: 
 DATE: 8/16/06

7-27-2006
 Date

PREPARED FOR
JAMES B. HAYES
ALEX COULDIAS

STATE OF OHIO
 ATHENS COUNTY
 AMES TOWNSHIP
 TOWN 6 RANGE 13
 SECTIONS 2, 3, 8, AND 9
 FRACTION 3

BASIS FOR BEARINGS ASSUMED.



LEGEND

- 5/8" CAPPED REBAR SET
- IRON PIN FOUND
- IRON PIPE FOUND
- △ STONE FOUND
- METAL FENCE POST

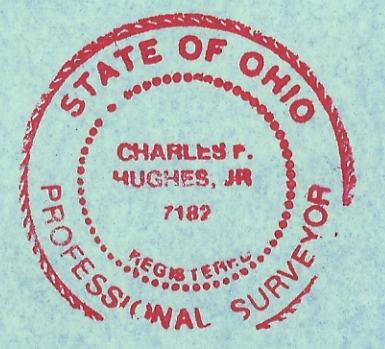
REFERENCE:

AMES TWP TAX MAPS:
 2, 3, 8, AND 9
 ADJOINERS DEEDS AS LISTED
 SURVEY PLAT BY ROBINSON
 SURVEYING 5-8-00

CALL TABLE:

- L-1 S 06° 45' 07" E 174.24'
- L-2 N 79° 40' 07" W 15.54'
- L-3 N 08° 26' 42" W 13.27'
- L-4 N 20° 58' 47" W 219.12'
- L-5 N 88° 03' 47" W 206.06'

Description checked for
 Mathematical Accuracy
 ATHENS COUNTY
 ENGINEER'S OFFICE
 BY: [Signature]
 DATE: 7/27/06



067 1121
 CHARLES F. HUGHES, JR.
 P.S. 7182
 DATE: 7-27-2006

CHARLES F. HUGHES, JR. PROFESSIONAL SURVEYOR		
SCALE: 1" = 200'	APPROVED BY: C. F. H., JR.	DRAWN BY: JLH
P.O. BOX 216, MINERAL WELLS, WV 26150		
1-304-489-9640		DRAWING NUMBER: 06-0702

