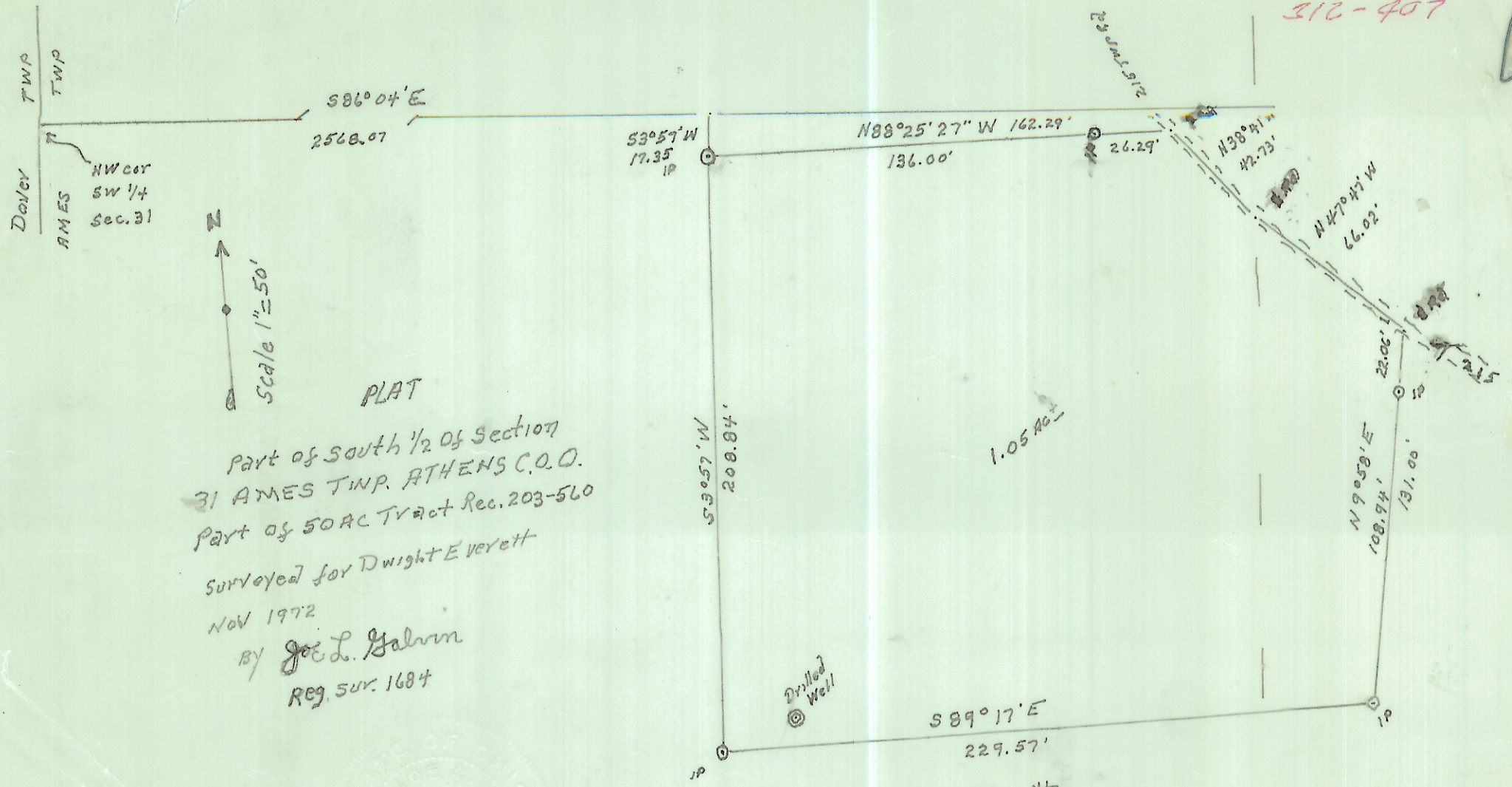


Rec 31  
AMES (JG) SW  
312-407



Daley TWP  
AMES TWP  
NW cor SW 1/4 Sec. 31

PLAT  
Part of south 1/2 of Section  
31 AMES TWP. ATHENS C.O.O.  
Part of 50 AC Tract Rec. 203-560  
Surveyed for Dwight Everett  
Nov 1972  
By Joe L. Galvin  
Reg. Sur. 1684



Dwight Everett  
203-560  
Part of 50 AC Tract

10240  
31  
AMES

18,592