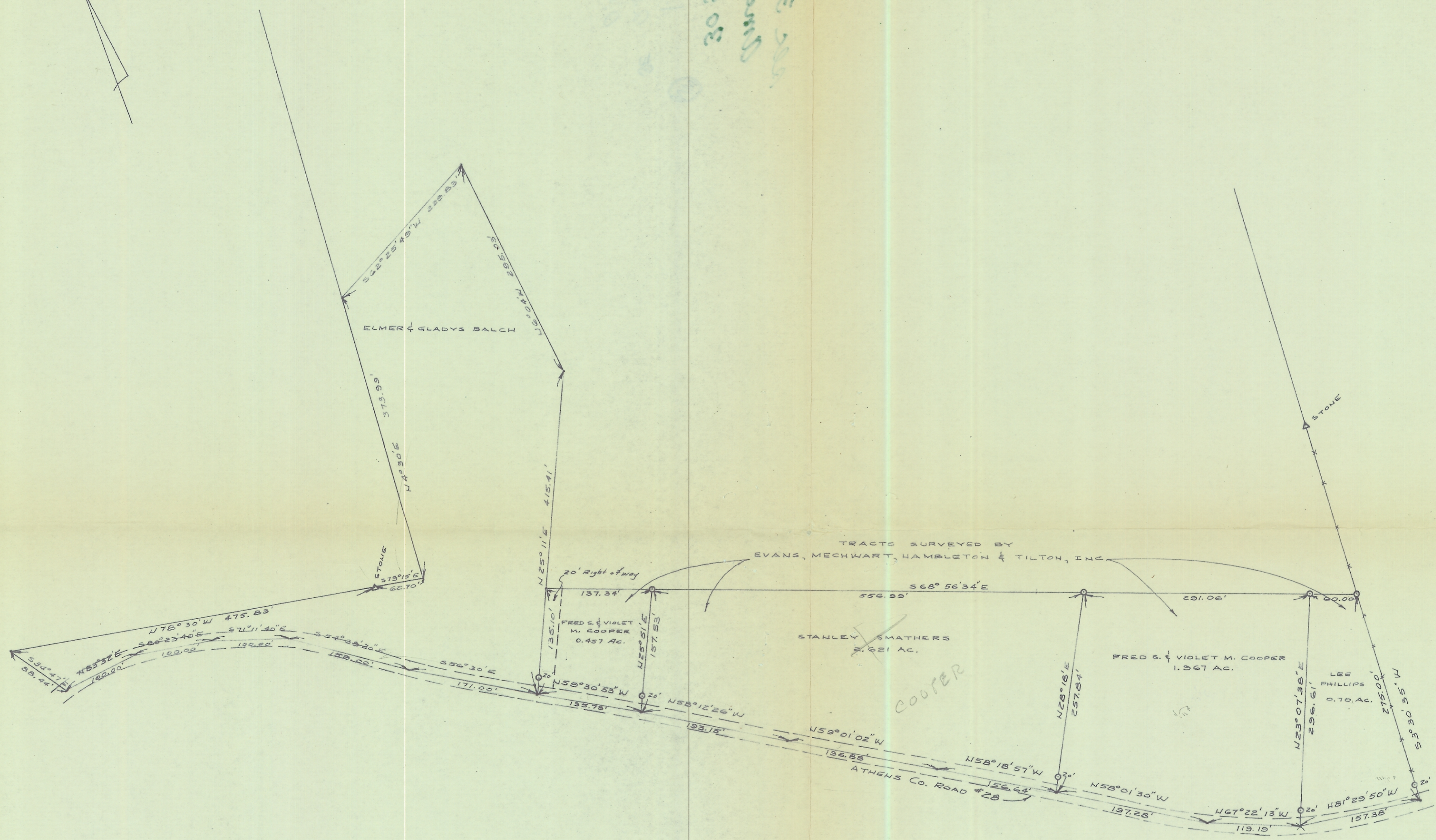


302-822
Evans
22 22



PLAT OF DIVISION OF PROPERTY
OF
FRED S. & VIOLET M. COOPER
SITUATED IN SECTION 33, TOWNSHIP 6,
RANGE 13, AMES TOWNSHIP, ATHENS COUNTY, OHIO

THIS PLAT IS PREPARED FROM SURVEYS MADE BY
EVANS, MECHWART, HAMBLETON & TILTON, INC. &
FROM DEED DESCRIPTIONS.

BY
EVANS, MECHWART, HAMBLETON & TILTON, INC.
CONSULTING ENGINEERS & SURVEYORS
GAHANNA, OHIO ATHENS, OHIO
William M. Watkins
REGISTERED SURVEYOR #5216

O = IRON PINS SET
Δ = STONES FOUND
SCALE: 1" = 100'
OCT., 1971