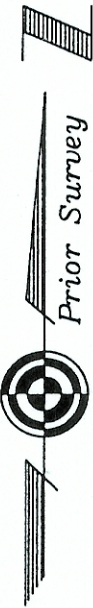


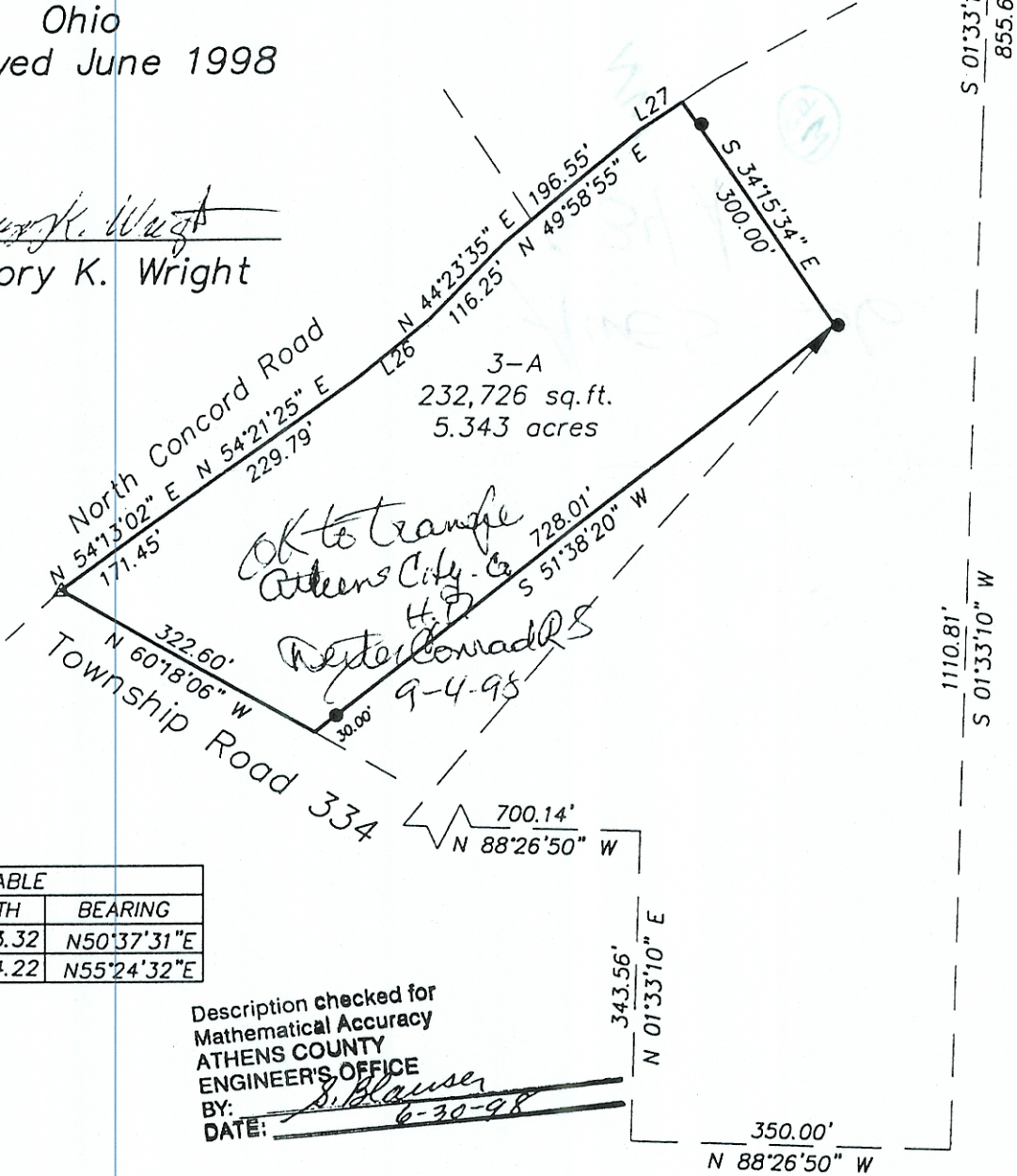
Morgan County  
Athens County  
Northwest Corner Section 36

- △ = Railroad Spike Found
- = Iron Pin Set
- = Stone Found

Parcel 3-A  
Survey of 5.343 Acres  
Situated in Section 36,  
Town 6, Range 13, Ames  
Township, Athens County,  
Ohio  
Surveyed June 1998



*Gregory K. Wright*  
Gregory K. Wright

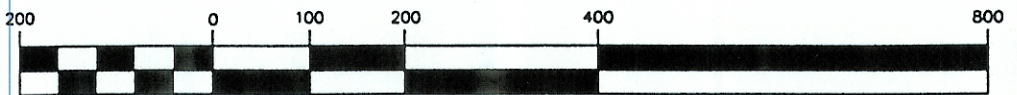


LINE TABLE		
LINE	LENGTH	BEARING
L26	103.32	N50°37'31"E
L27	54.22	N55°24'32"E

Description checked for  
Mathematical Accuracy  
ATHENS COUNTY  
ENGINEER'S OFFICE  
BY: *S. Blauer*  
DATE: *6-30-98*



GRAPHIC SCALE



( IN FEET )  
1 inch = 200 ft.