

DESCRIPTION OF A 3.51 ACRE TRACT

Situated in L.L. 47 Section 11, T.9, R.14, Athens Township, Athens County, Ohio and being more particularly described as follows:

Beginning at the North-east corner on L.L. 47,

thence South 3 degrees 43 minutes 45 seconds West, a distance of 153.60 feet to the South-west corner of L.L. 210;

thence South 86 degrees 42 minutes 23 seconds East, a distance of 221.25 feet to a point in the center-line of County Road 20 and being a point of curvature of a non-tangent curve, concave to the North, having a radius of 1527.89 feet, a central angle of 46 degrees 23 minutes 27 seconds, and a chord of 1203.57 feet bearing North 77 degrees 28 minutes 24 seconds West;

thence West along said curve, a distance of 1237.09 feet to a point in the North-line of L.L. 47;

thence, along said line, South 84 degrees 22 minutes 06 seconds East, a distance of 968.71 feet to the POINT OF BEGINNING; said described tract containing 3.511 acres.

Subject to all easements and rights of way of record.

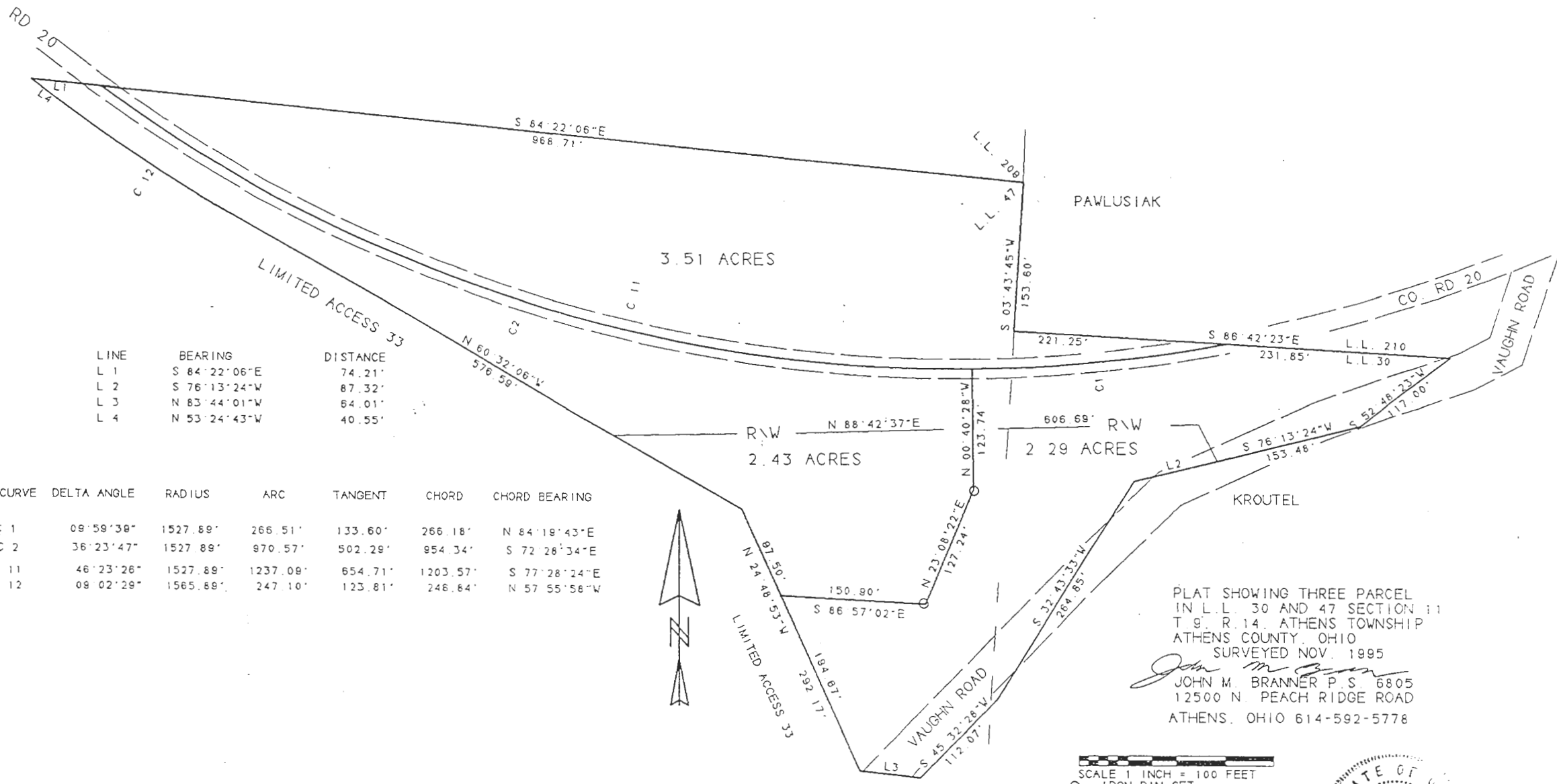
  
John M. Branner P.S. 6805



Description checked for  
Mathematical Accuracy  
ATHENS COUNTY  
ENGINEER'S OFFICE  
BY: Brenda King  
DATE: 11-14-95

147

ATH # 11



LINE	BEARING	DISTANCE
L 1	S 84° 22' 06" E	74.21'
L 2	S 76° 13' 24" W	67.32'
L 3	N 83° 44' 01" W	64.01'
L 4	N 53° 24' 43" W	40.55'

CURVE	DELTA ANGLE	RADIUS	ARC	TANGENT	CHORD	CHORD BEARING
1	09° 59' 38"	1527.89'	266.51'	133.60'	266.18'	N 84° 19' 43" E
2	36° 23' 47"	1527.89'	970.57'	502.28'	954.34'	S 72° 26' 34" E
11	46° 23' 26"	1527.89'	1237.09'	654.71'	1203.57'	S 77° 28' 24" E
12	09° 02' 29"	1565.89'	247.10'	123.81'	246.84'	N 57° 55' 58" W



PLAT SHOWING THREE PARCEL  
 IN L.L. 30 AND 47 SECTION 11  
 T. 9, R. 14, ATHENS TOWNSHIP  
 ATHENS COUNTY, OHIO  
 SURVEYED NOV. 1995  
*John M. Branner*  
 JOHN M. BRANNER P.S. 6805  
 12500 N. PEACH RIDGE ROAD  
 ATHENS, OHIO 614-592-5778

SCALE 1 INCH = 100 FEET  
 O • IRON PIN SET



149