



# SOUTHEASTERN LAND SURVEYS

LEONARD F. SWOYER  
REGISTERED PROFESSIONAL LAND SURVEYOR

3428 Pleasant Hill Road  
Athens, Ohio 45701  
614/593-8701

## TRACT C

Situated in Farm Lot 13, Section 2, Athens Township, Town 9, Range 14, Athens County, Ohio and described as follows:

Commencing at a set iron pin which bears South 82 degrees 51 minutes 32 seconds East (assumed bearing), a distance of 477.09 feet and North 6 degrees 10 minutes 22 seconds East, a distance of 671.19 feet from a found iron pin at the southwest corner of Farm Lot 13 and the grantor's southwest corner, said set iron pin being THE TRUE POINT OF BEGINNING; thence along a new property line the following six bearing and distances: 1) North 83 degrees 29 minutes 26 seconds West, a distance of 352.02 feet to a set iron pin; thence 2) North 23 degrees 15 minutes 27 seconds East, a distance of 90.14 feet to a set iron pin; thence 3) North 31 degrees 45 minutes 14 seconds East, a distance of 209.18 feet to a set iron pin; thence 4) North 26 degrees 09 minutes 42 seconds East, a distance of 112.96 feet to a set iron pin; thence 5) North 11 degrees 53 minutes 01 second East, a distance of 356.45 feet to a set iron pin; thence 6) North 24 degrees 37 minutes 00 seconds East, passing a set iron pin at 88.0 feet, for a total distance of 114.78 feet to a point in Athens County Road 98; thence along said road the following nine bearings and distances: 1) South 73 degrees 33 minutes 43 seconds East, a distance of 31.05 feet to a point; thence 2) South 86 degrees 13 minutes 43 seconds East, a distance of 100.00 feet to a point; thence 3) South 89 degrees 55 minutes 43 seconds East, a distance of 101.00 feet to a point; thence 4) South 82 degrees 12 minutes 43 seconds East, a distance of 108.30 feet to a point; thence 5) South 72 degrees 57 minutes 58 seconds East, a distance of 106.55 feet to a point; thence 6) South 30 degrees 00 minutes 00 seconds East, a distance of 180.84 feet to a point; thence 7) South 9 degrees 00 minutes 00 seconds East, a distance of 150.48 feet to a point; thence 8) South 18 degrees 00 minutes 00 seconds West, a distance of 181.50 feet to a point; thence 9) South 9 degrees 00 minutes 00 seconds East, a distance of 178.63 feet to a point; thence leaving said road and along a new property line South 74 degrees 11 minutes 13 seconds West, passing a set iron pin at 26.56 feet, for a total distance of 511.87 feet to the POINT OF BEGINNING and containing 11.727 acres, and being a part of a 29.85 acre tract (by deed) described in Volume 289 Page 271 of the Athens County Deed Records. Note: Unless otherwise noted, all set iron pins are 5/8 inch diameter rebar and 30 inches in length and capped with a plastic identification marker inscribed L.F. Swoyer R.L.S. 6765. The above description was prepared under the supervision of Leonard F. Swoyer Registered Professional Land Surveyor No. 6765 and based on a survey performed by Southeastern Land Surveys dated February 17, 1999. Subject to all easements and right of ways of record.

Description checked for  
Mathematical Accuracy  
ATHENS COUNTY  
ENGINEER'S OFFICE  
BY: L. Cantelano  
DATE: 2/24/99

88

PROPERTY

CONSTRUCTION

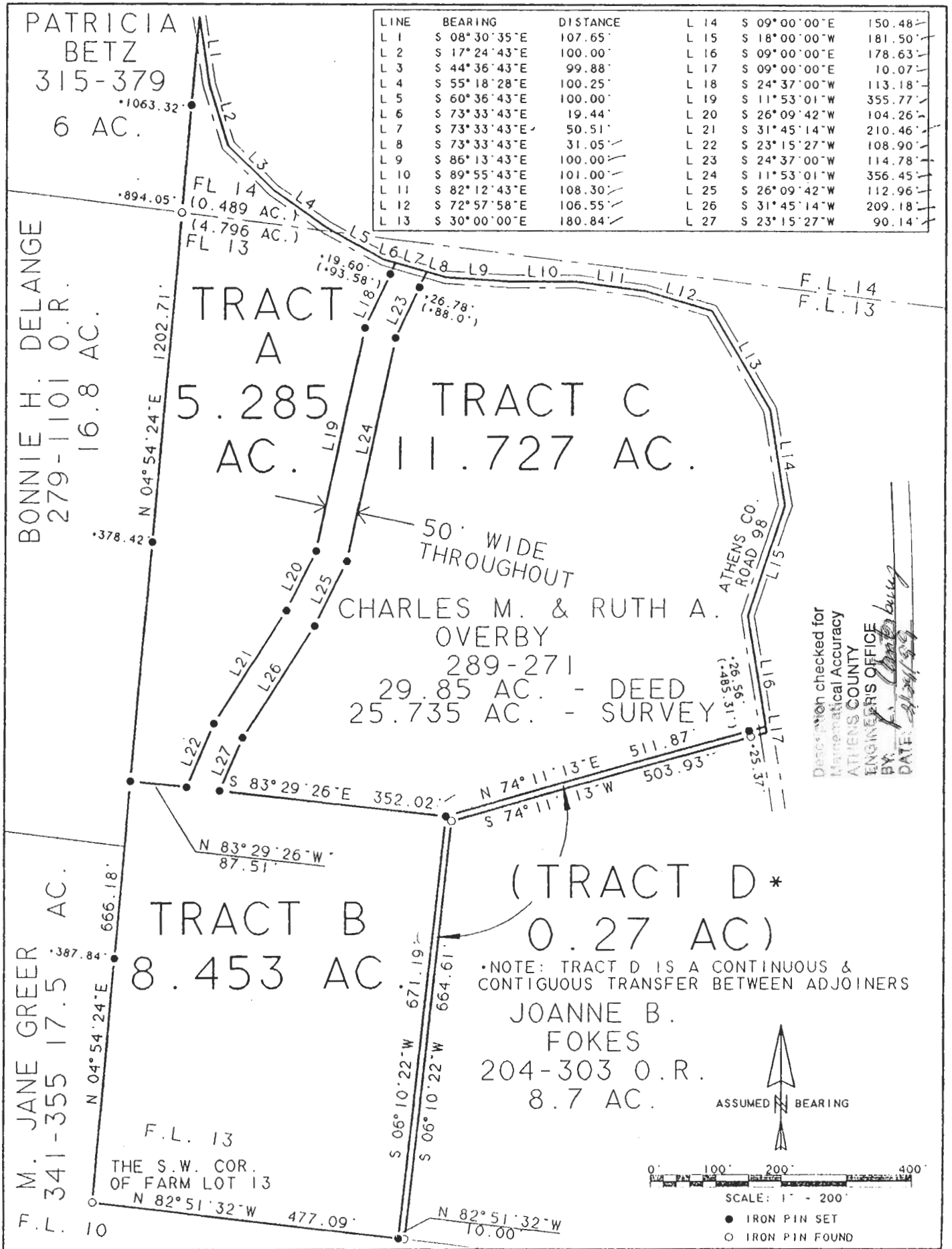
SUBDIVISIONS



# SOUTHEASTERN LAND SURVEYS

LEONARD F. SWOYER  
REGISTERED PROFESSIONAL LAND SURVEYOR

3428 Pleasant Hill Road  
Athens, Ohio 45701  
614/593-8701



Plat of Survey of Tracts A-D, inclusive Scale 1" = 200'  
 Surveyed for Charles & Ruth Overby Date 2/17/99  
 Subdivision Farm Lots 13 & 14  
 Township Athens Section 2 Town 9 Range 14  
 Corporation --- County Athens State Ohio

*Leonard F. Swoyer Jr.*  
 Leonard F. Swoyer Jr. Reg. Prof. Land Surveyor No. 6765

92