

# BRANNER SURVEYING

MEMBER-PROFESSIONAL LAND SURVEYORS OF OHIO

12500 PEACH RIDGE ROAD  
ATHENS, OHIO 45701

JOHN M. BRANNER  
Registered Land Surveyor

TELEPHONE  
(614) 592-5778

## DESCRIPTION OF A 36.18 ACRE TRACT

Situated in L.L. 95 in Sections 20 and 21 of T. 9, R. 14, Athens Township, Athens County, Ohio and being more particularly described as follows:

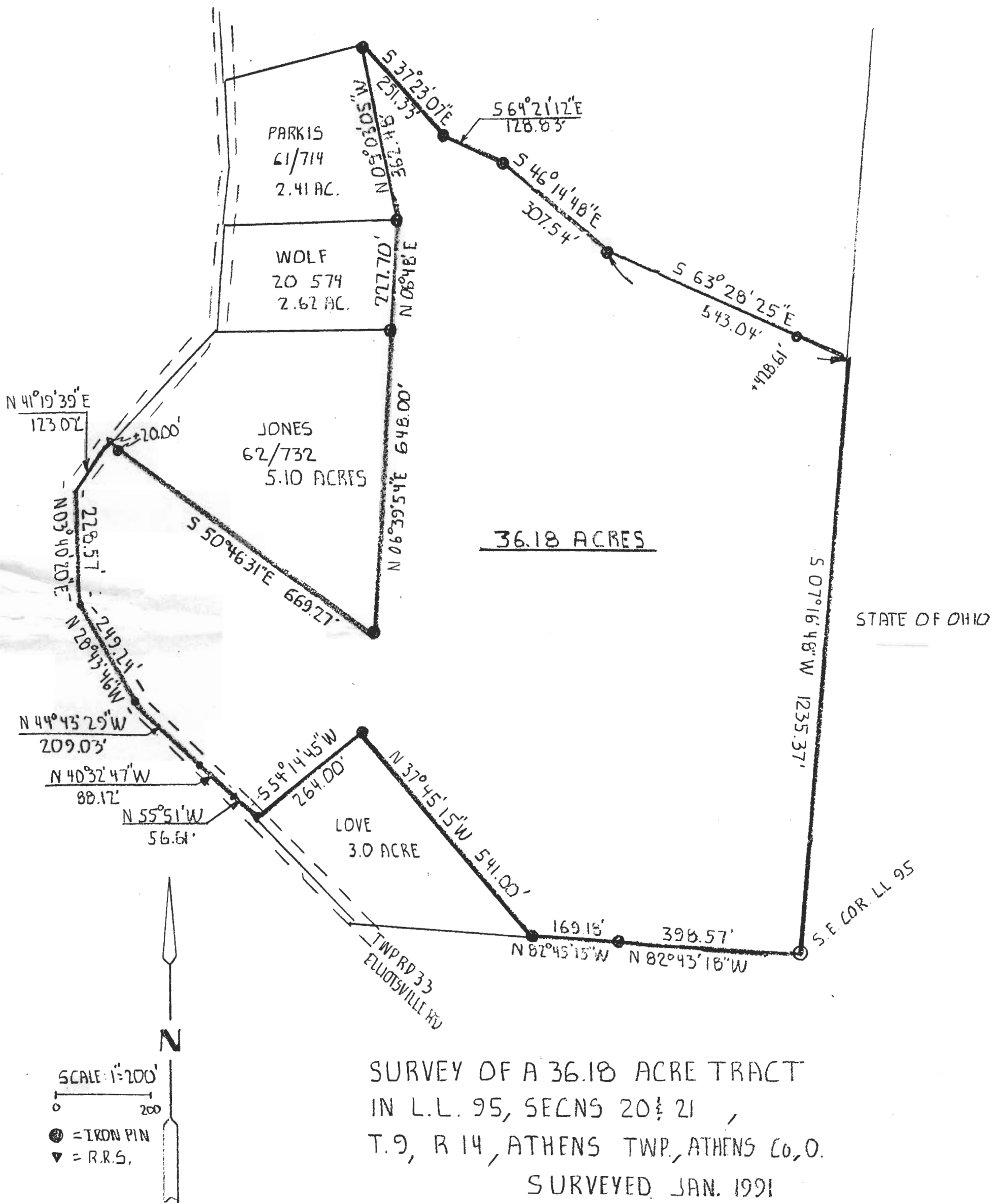
Beginning at an iron pin found at the South-east corner of L.L. 95, thence, along the South-line of said Lot, North 82 Degrees 43 Minutes 18 Seconds West, 398.57 feet to an iron pin; thence, North 82 Degrees 45 Minutes 15 Seconds West, 169.18 feet to an iron pin at the easterly most corner of a 3.0 acre tract; thence, along said tract, North 37 Degrees 45 Minutes 15 Seconds West, 541.00 feet to an iron pin at the Northerly most corner of said 3.0 acre tract; thence, South 54 Degrees 14 Minutes 45 Seconds West, 264.00 feet to a railroad spike in Township Road 33 (Elliotsville Road); thence, along said road North 55 Degrees 51 Minutes West, 56.61 feet; thence, North 40 Degrees 32 Minutes 47 Seconds West, 88.12 feet; thence, North 44 Degrees 43 Minutes 29 Seconds West, 209.03 feet; thence, North 28 Degrees 43 Minutes 46 Seconds West, 249.24 feet; thence, North 03 Degrees 40 Minutes 20 Seconds East, 228.57 feet; thence, North 41 Degrees 19 Minutes 39 Seconds East, 123.02 feet to a railroad spike at the South-west corner of a 5.10 acre tract (Vol. 62, Page 732 Athens County Official Records); thence, with the lines of said tract, South 50 Degrees 46 Minutes 31 Seconds East, 669.27 feet; to an iron pin; thence, North 06 Degrees 39 Minutes 54 Seconds East, 648.00 feet to an iron pin at the South-east corner of a 2.62 acre tract (Vol. 20, Page 574 (Athens County Official Records)); thence, along the line of said tract North 06 Degrees 48 Minutes East, 227.70 feet to an iron pin at the South-east corner of a 2.41 acre tract (Vol. 61, Page 714 (Athens County Official Records)); thence, with the line of said tract North 09 Degrees 03 Minutes 05 Seconds West, 362.48 feet to an iron pin at the north-east corner of said tract; thence, South 37 Degrees 23 Minutes 07 Seconds East, 251.33 feet to an iron pin; thence, South 64 Degrees 21 Minutes 12 Seconds East, 128.83 feet to an iron pin; thence, South 46 Degrees 14 Minutes 48 Seconds East, 307.54 feet to an iron pin; thence, South 63 Degrees 28 Minutes 25 Seconds East, 543.04 feet to a point on the East-line of L.L. 95, passing an iron pin set at 428.61 feet; thence, along said line South 07 Degrees 16 Minutes 48 Seconds West, 1235.37 feet to the point of beginning and containing 36.18 acres.

Subject to all easements and rights of way of records.

Description checked for  
Mathematical Accuracy  
ATHENS COUNTY  
ENGINEER'S OFFICE  
BY: Cheryl L. Hedger  
DATE: 1/30/98

John M. Branner P.S. 6805

ATH #30



SURVEY OF A 36.18 ACRE TRACT  
 IN L.L. 95, SECNS 20 & 21  
 T. 9, R 14, ATHENS TWP, ATHENS Co, O.  
 SURVEYED JAN. 1991

JOHN M. BRANNER P.S 6805  
 12500 N. PEACH RIDGE ROAD  
 ATHENS, OHIO 522-5778