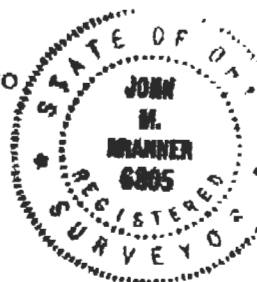


BRANNER SURVEYING

MEMBER-PROFESSIONAL LAND SURVEYORS OF OHIO

12500 N. PEACH RIDGE ROAD
ATHENS, OHIO 45701JOHN M. BRANNER
Registered Land SurveyorTELEPHONE
(814) 592-5778

Situated in Farm-lots 94,98,100,101 in Section 21, T.9, R.14, Athens township, Athens County, Ohio and being more particularly described as follows:

Beginning at an iron pin found at the North-west corner of F.L. 98; thence South 84 degrees 22 minutes 12 seconds East, a distance of 204.76 feet to an iron pin set to replace an existing railroad spike;

thence North 12 degrees 38 minutes 21 seconds East, a distance of 805.26 feet to an iron pin set;

thence North 82 degrees 50 minutes 45 seconds East, a distance of 590.61 feet to an iron pin set at an existing fence corner;

thence South 5 degrees 13 minutes 40 seconds West, a distance of 465.69 feet along an existing fence -line to an iron pin set;

thence South 11 degrees 30 minutes 02 seconds East, a distance of 447.18 feet to a point in the Westerly right of way line of Conrail, passing an iron pin set at 395.26 feet;

thence, with the right of way of Conrail, South 41 degrees 57 minutes 08 seconds West, a distance of 567.86 feet to the point of curvature of a curve, concave to the Southeast, having a radius of 1005.37 feet, a central angle of 28 degrees 31 minutes 10 seconds, and a chord of 495.28 feet bearing South 27 degrees 41 minutes 32 seconds West; thence Southwest along said curve, a distance of 500.43 feet;

thence South 13 degrees 25 minutes 57 seconds West, a distance of 671.54 feet to a point in Margaret Creek;

thence, along said creek: North 73 degrees 17 minutes 17 seconds West, a distance of 93.14 feet;

thence North 79 degrees 37 minutes 02 seconds West, a distance of 101.34 feet;

thence North 83 degrees 23 minutes 03 seconds West, a distance of 115.51 feet;

thence South 86 degrees 19 minutes 10 seconds West, a distance of 65.63 feet;

thence South 40 degrees 13 minutes 18 seconds West, a distance of 76.09 feet;

thence South 16 degrees 08 minutes 06 seconds West, a distance of 57.96 feet;

thence South 28 degrees 18 minutes 20 seconds West, a distance of 97.31 feet;

thence South 43 degrees 03 minutes 29 seconds West, a distance of 36.06 feet;

thence South 32 degrees 44 minutes 16 seconds West, a distance of 41.32 feet;

thence, leaving said creek, North 3 degrees 06 minutes 07 seconds East, a distance of 365.93 feet to an iron pin;

thence South 86 degrees 37 minutes 49 seconds East, a distance of 209.71 feet to a P.K. nail in a 60 inch oak;

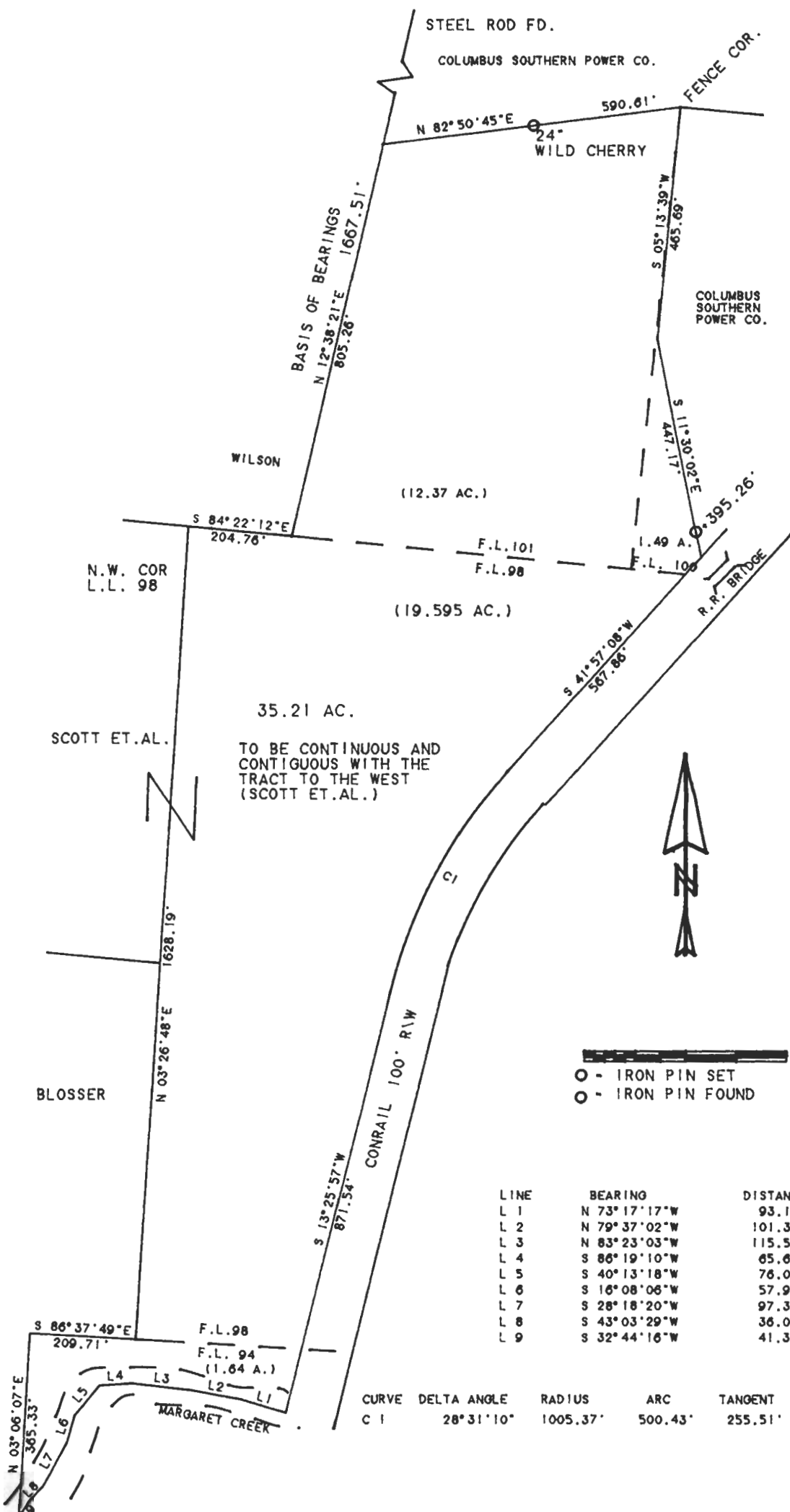
thence North 3 degrees 26 minutes 48 seconds East, a distance of 1628.19 feet to the POINT OF BEGINNING; said described tract containing 35.095 acres.

Subject to all easements and rights of way of record. *John M. Branner*

Description checked for
Mathematical Accuracy
ATHENS COUNTY
ENGINEER'S OFFICE
BY: *S. Blausch*
DATE: *8-15-94*

110

ATH # 21



○ - IRON PIN SET
○ - IRON PIN FOUND

LINE	BEARING	DISTANCE
L 1	N 73° 17' 17" W	93.14'
L 2	N 79° 37' 02" W	101.34'
L 3	N 83° 23' 03" W	115.51'
L 4	S 86° 19' 10" W	65.63'
L 5	S 40° 13' 18" W	76.09'
L 6	S 16° 08' 06" W	57.96'
L 7	S 28° 18' 20" W	97.31'
L 8	S 43° 03' 29" W	36.06'
L 9	S 32° 44' 16" W	41.32'

CURVE	DELTA ANGLE	RADIUS	ARC	TANGENT	CHORD	CHORD BEARING
C 1	28° 31' 10"	1005.37'	500.43'	255.51'	495.28'	S 27° 41' 32" W



SURVEY OF A 35.095 ACRE TRACT IN F.L. 94,98,100,101
IN SECTION 21, T.9, R.14, ATHENS TOWNSHIP, ATHENS CO., O.
SURVEYED AUGUST 1994

John M. Branner
JOHN M. BRANNER P.S. 6805 12500 N. PEACH RIDGE RD. ATHENS, O.

112