

BRANNER SURVEYING

MEMBER-PROFESSIONAL LAND SURVEYORS OF OHIO

12500 N. PEACH RIDGE ROAD
ATHENS, OHIO 45701

JOHN M. BRANNER
Registered Land Surveyor

DESCRIPTION OF A 48.134 ACRE TRACT

TELEPHONE
(614) 592-5778

Situated in Section 22, Fraction 100 and 101, T. 9, R. 14, Athens Township, Athens County, Ohio and being more particularly described as follows.

Commencing at the North-east corner of Fraction 100;
thence, North 86 degrees 52 minutes 45 seconds West, a distance of 644.82 feet to an iron pin found;
thence, South 0 degrees 28 minutes 41 seconds East, a distance of 250.53 feet to an iron pin found;
thence, South 37 degrees 46 minutes 02 seconds East, a distance of 913.55 feet to a point in State Route 682, said point being the POINT OF BEGINNING;
thence, following said State Route, South 60 degrees 11 minutes 15 seconds East, a distance of 44.72 feet to a point;
thence, South 38 degrees 39 minutes 52 seconds East, a distance of 313.01 feet to a point;
thence, South 31 degrees 05 minutes 38 seconds East, a distance of 178.30 feet to a point;
thence, South 36 degrees 54 minutes 58 seconds East, a distance of 341.38 feet to a point in the intersection of State Route 682 and Township Road 202;
thence, leaving said State Route and following said Road, South 67 degrees 56 minutes 26 seconds West, a distance of 228.29 feet to a point;
thence, South 69 degrees 19 minutes 13 seconds West, a distance of 82.19 feet to an iron pin found;
thence, South 75 degrees 41 minutes 09 seconds West, a distance of 106.74 feet to an iron pin found;
thence, South 79 degrees 41 minutes 45 seconds West, a distance of 254.58 feet to an iron pin found;
thence, South 72 degrees 00 minutes 41 seconds West, a distance of 112.20 feet to a point;
thence, South 42 degrees 38 minutes 47 seconds West, a distance of 69.61 feet to an iron pin found;
thence, North 27 degrees 25 minutes 43 seconds West, a distance of 103.03 feet to an iron pin found;
thence, South 72 degrees 31 minutes 34 seconds West, a distance of 280.34 feet to an iron pin found;
thence, South 4 degrees 39 minutes 00 seconds East, a distance of 138.02 feet to an iron pin found, said point being the point of curvature of a non-tangent curve, concave to the North, having a radius of 3771.83 feet, a central angle of 6 degrees 39 minutes 47 seconds, and a chord of 438.39 feet bearing North 81 degrees 45 minutes 24 seconds West; thence West along said curve, a distance of 438.64 feet to a point;

20

BRANNER SURVEYING

MEMBER-PROFESSIONAL LAND SURVEYORS OF OHIO

12500 N. PEACH RIDGE ROAD
ATHENS, OHIO 45701

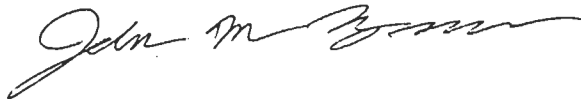
JOHN M. BRANNER
Registered Land Surveyor

TELEPHONE
(614) 592-5778

thence, North 78 degrees 25 minutes 19 seconds West, a distance of 138.03 feet to an iron pin set;
thence, North 33 degrees 11 minutes 11 seconds East, a distance of 422.40 feet to an iron pin set;
thence, North 76 degrees 40 minutes 24 seconds West, a distance of 325.38 feet to an iron pin set;
thence, South 34 degrees 11 minutes 37 seconds West, a distance of 433.62 feet to an iron pin set;
thence, North 77 degrees 57 minutes 37 seconds West, a distance of 290.19 feet to an iron pin set on the West line of Fraction 100;
thence, following said Fraction line, North 0 degrees 07 minutes 21 seconds West, a distance of 1064.27 feet to a found stone;
thence, South 49 degrees 25 minutes 23 seconds East, a distance of 522.43 feet to a found stone;
thence, South 89 degrees 57 minutes 40 seconds East, a distance of 418.03 feet to a found stone;
thence, North 25 degrees 01 minute 00 seconds West, a distance of 623.46 feet to a found stone;
thence, North 7 degrees 13 minutes 53 seconds West, a distance of 232.09 feet to an iron pin set;
thence, South 62 degrees 25 minutes 35 seconds East, a distance of 765.41 feet to a point on State Route 682 Right of way;
thence, South 62 degrees 13 minutes 19 seconds East, a distance of 624.19 feet to the POINT OF BEGINNING; said described tract containing 48.134 acres, 41.412 acres being in Fraction 100 and 6.722 acres being in Fraction 101.

Subject to all easements and right of ways of record.
All iron pins set are 5/8 inch x 30 inch long rebar.

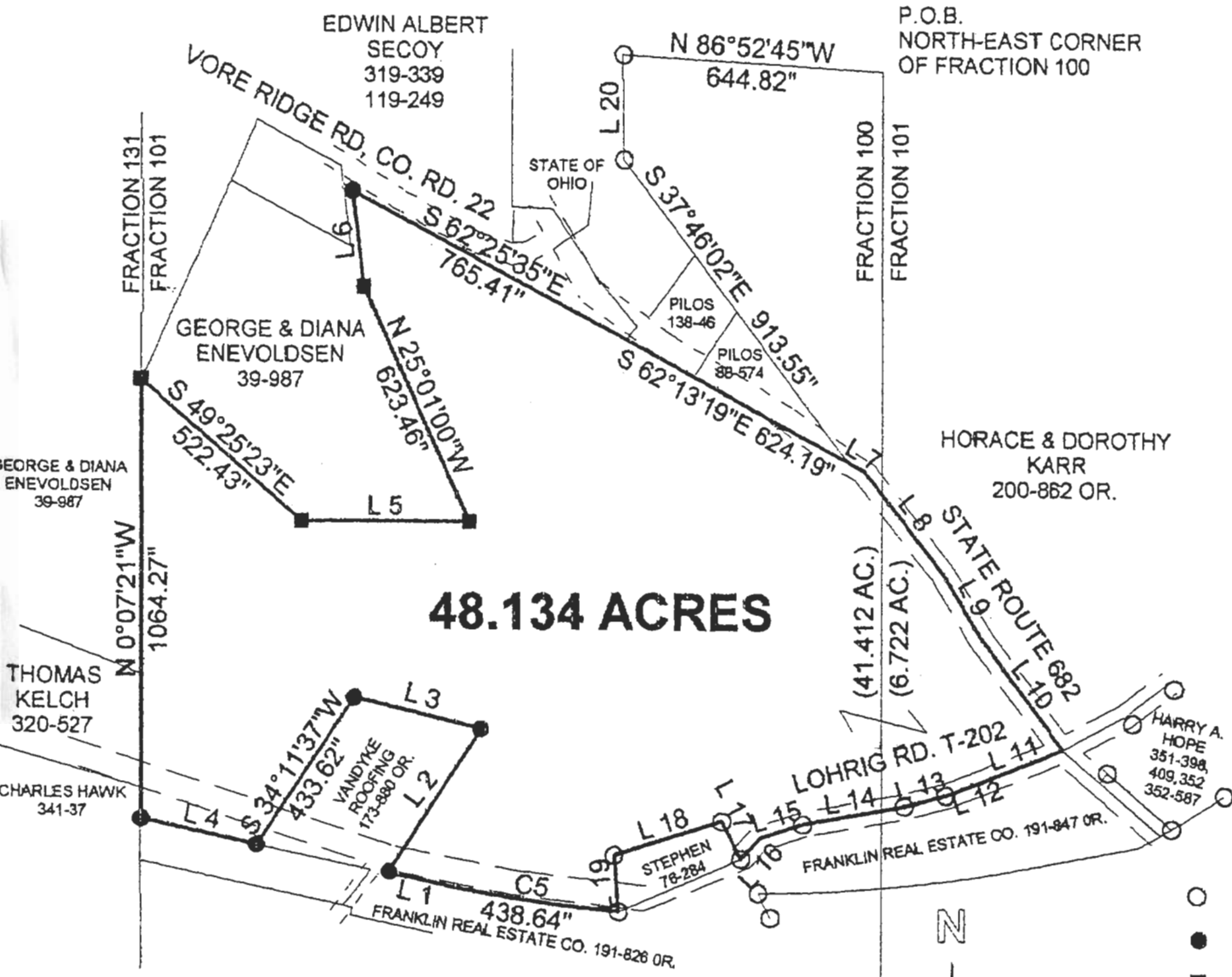
The above description is based on a field survey completed October 1997 By: John M. Branner P.S. 6805 12500 N. Peach Ridge Road, Athens, Ohio 45701 (614) 592-5778



Description checked for
Mathematical Accuracy
ATHENS COUNTY
ENGINEER'S OFFICE

BY: S. Blausen
DATE: 11-17-97

21

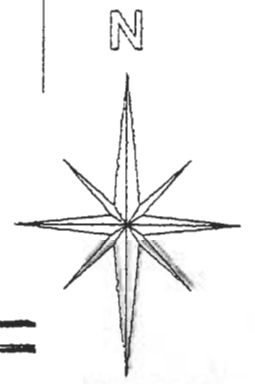


48.134 ACRES

Line	Bearing	Distance
1	N 78°25'19"W	138.03'
2	N 33°11'11"E	422.40"
3	N 76°40'24"W	325.38"
4	N 77°57'37"W	290.19"
5	S 89°57'40"E	418.03"
6	N 7°13'53"W	232.09"
7	S 60°11'15"E	44.72"
8	S 38°39'52"E	313.01"
9	S 31°05'38"E	178.30"
10	S 36°54'58"E	341.38"
11	S 67°56'26"W	228.29"
12	S 69°19'13"W	82.19'
13	S 75°41'09"W	106.74"
14	S 79°41'45"W	254.58"
15	S 72°00'41"W	112.20"
16	S 42°38'47"W	69.61'
17	N 27°25'43"W	103.03"
18	S 72°31'34"W	280.34"
19	S 4°39'00"E	138.02"
20	S 0°28'41"E	250.53"

Curve 5
 Delta Angle 6°39'47"
 Radius 3771.83
 Arc 438.64
 Tangent 219.57
 Chord 438.39
 Chord Bearing N 81°45'24" W

Description checked for
 Mathematical Accuracy
 ATHENS COUNTY
 ENGINEER'S OFFICE
 BY: *E. Blausen*
 DATE: *11-17-97*



1 INCH = 400 FEET

- = IRON PIN FOUND
- = IRON PIN SET
- = STONE FOUND
- = R.R. SPIKE FOUND

BEARINGS ARE BASED ON
 A 41.42 ACRE SURVEY AND
 ARE USED TO DENOTE
 ANGLES ONLY.

SURVEY OF A 48.134 ACRE TRACT
 SECTION 22, FRACTION 100 AND 101,
 T. 9, R. 14, ATHENS TOWNSHIP,
 ATHENS COUNTY, OHIO
 SURVEYED OCTOBER 1997

John M. Branner
 JOHN M. BRANNER P.S. 6805
 12500 N. PEACH RIDGE ROAD,
 ATHENS, OHIO (614) 592-5778

22

22 # HLH