

DESCRIPTION OF A 31.14 ACRE TRACT

Situated in L.L. 121 and L.L. 122 of Section 26, T.9, R.14, Athens Township, Athens County, Ohio and being more particularly described as follows:

Beginning at a stone that bears South 84 Degrees 51 Minutes 01 Seconds East, 139.2 feet from the South-east corner of Lease Lot 122,
 thence South 84 degrees 51 minutes 01 second East, a distance of 790.41 feet to a fence corner;
 thence North 4 degrees 25 minutes 19 seconds East, a distance of 1642.19 feet to an iron pin set;
 thence North 86 degrees 07 minutes 54 seconds West, a distance of 353.14 feet;
 thence South 5 degrees 58 minutes 40 seconds West, a distance of 419.94 feet to the point of curvature of a non-tangent curve, concave to the South, having a radius of 225.00 feet, a central angle of 16 degrees 58 minutes 33 seconds, and a chord of 66.42 feet bearing South 89 degrees 24 minutes 02 seconds West; thence West along said curve, a distance of 66.66 feet;
 thence South 80 degrees 54 minutes 47 seconds West, a distance of 224.03 feet to the point of curvature of a non-tangent curve, concave to the South, having a radius of 225.00 feet, a central angle of 10 degrees 56 minutes 09 seconds, and a chord of 42.88 feet bearing South 75 degrees 26 minutes 44 seconds West; thence West along said curve, a distance of 42.95 feet;
 thence South 69 degrees 58 minutes 40 seconds West, a distance of 29.70 feet;
 thence North 24 degrees 35 minutes 24 seconds West, a distance of 257.32 feet;
 thence South 46 degrees 07 minutes 06 seconds West, a distance of 452.55 feet;
 thence North 81 degrees 19 minutes 03 seconds West, a distance of 92.83 feet;
 thence North 89 degrees 18 minutes 22 seconds West, a distance of 105.01 feet;
 thence North 84 degrees 50 minutes 42 seconds West, a distance of 230.15 feet;
 thence North 81 degrees 03 minutes 28 seconds West, a distance of 263.34 feet to a point in Radford Road;
 thence, along said road, South 2 degrees 00 minutes 53 seconds East, a distance of 76.19 feet;
 thence, leaving said road, South 85 degrees 41 minutes 08 seconds East, a distance of 250.00 feet to an iron pin, passing an iron pin at 25.00 feet;
 thence South 84 degrees 11 minutes 08 seconds East, a distance of 175.03 feet;

Description checked for
 Mathematical Accuracy
 ATHENS COUNTY
 ENGINEER'S OFFICE
 BY: J. Klaus
 DATE: 2-22-96

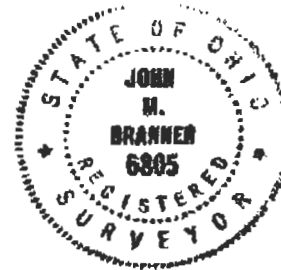
ATH#26

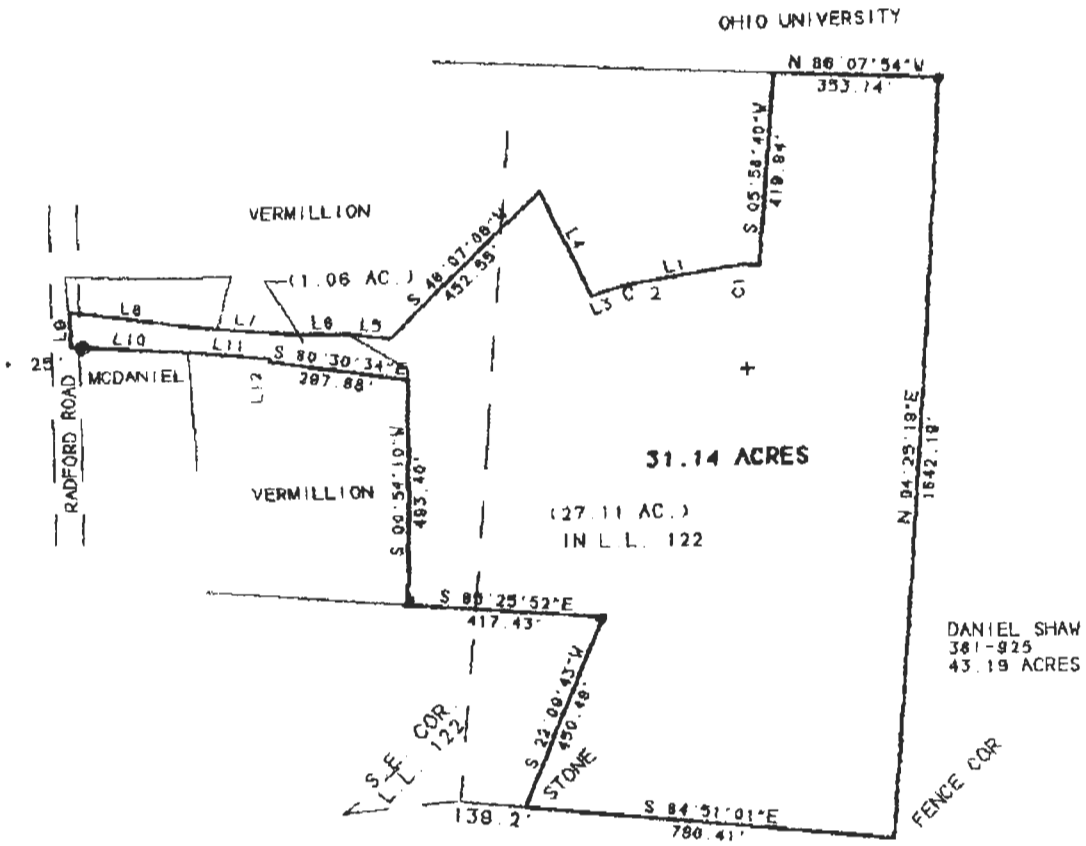
129

thence South 3 degrees 00 minutes 50 seconds East, a distance of 7.10 feet;
thence South 80 Degrees 30 Minutes 34 Seconds East, 297.88 feet to an iron pin found;
thence South 0 degrees 54 minutes 10 seconds West, a distance of 493.40 feet;
thence South 85 degrees 25 minutes 52 seconds East, a distance of 417.43 feet;
thence South 22 degrees 09 minutes 43 seconds West, a distance of 450.49 feet to the POINT OF BEGINNING; said described tract containing 31.14 acres.

Subject to all easements and rights of way of record.

The above description is based on a field survey completed November 1995 by John M. Branner P.S. 6805





CURVE	DELTA ANGLE	RADIUS	ARC	TANGENT	CHORD	CHORD BEARING
C 1	18 58' 33"	225.00'	66.86'	33.58'	66.42'	S 89 24' 02" W
C 2	10 56' 09"	225.00'	42.85'	21.54'	42.88'	S 75 26' 44" W
LINE	BEARING	DISTANCE				
L 1	S 80 54' 47" W	224.03'				
L 2	S 75 28' 44" W	42.88'				
L 3	S 69 58' 40" W	28.70'				
L 4	N 24 35' 24" V	257.32'				
L 5	N 81 18' 03" V	82.83'				
L 6	N 80 18' 22" V	105.01'				
L 7	N 84 50' 42" V	230.15'				
L 8	N 81 03' 28" W	263.34'				
L 9	S 02 00' 53" E	76.19'				
L 10	S 85 41' 08" E	250.00'				
L 11	S 84 11' 08" E	175.03'				
L 12	S 03 00' 50" E	7.10'				



SCALE 1 INCH = 300 FEET
 ○ = IRON PIN SET
 ● = IRON PIN FOUND

SURVEY OF A 31.14 ACRE TRACT IN L.L. 121,
 L.L. 122, SECTION 26, T.8, R.14, ATHENS TWP.,
 ATHENS COUNTY, OHIO
 SURVEYED NOVEMBER 1995

John M. Branner
 JOHN M. BRANNER P.S. 6805
 12500 N PEACH RIDGE ROAD
 ATHENS OHIO 614-592-5778

131