

BRANNER SURVEYING
12500 N. PEACH RIDGE ROAD
ATHENS, OHIO 614-592-5778

DESCRIPTION OF A 0.158 ACRE TRACT

Situated in Section 26, T.9, R.14, Athens Township, Athens County, Ohio and being a part of Lot 20 of the Heatherstone Subdivision as recorded in plat Envelope 470-A in the Office of the Athens county Recorder and being more particularly described as follows:

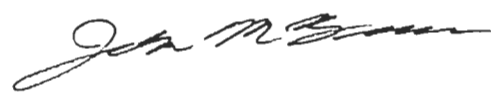
Beginning at the South-east corner of Lot 20, thence, along the North right of way line of Heatherstone Drive, South 69 degrees 58 minutes 40 seconds West, a distance of 53.60 feet to an iron pin set;

thence North 12 degrees 40 minutes 03 seconds West, a distance of 258.63 feet to an iron pin at the Northerly most corner of Lot 20;

thence, along the East-line of Lot 20, South 24 degrees 35 minutes 24 seconds East, a distance of 257.32 feet to the POINT OF BEGINNING; said described tract containing 0.158 acre.

Subject to all easements and rights of way of record.

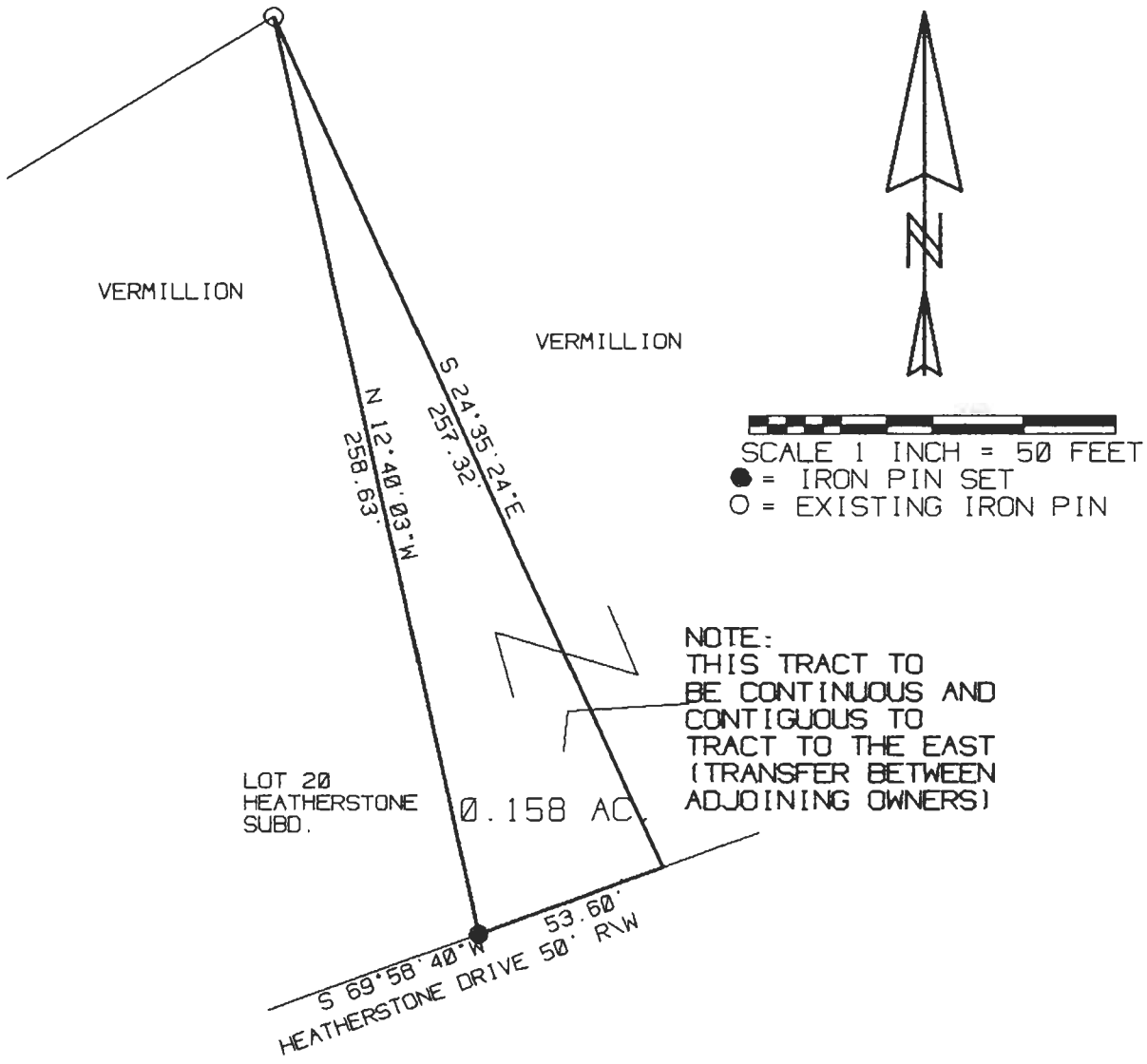
The above description is based on a field survey by John M. Branner P.S. 6805



Checked for
Mathematical Accuracy
ATHENS COUNTY
ENGINEERS OFFICE

Description checked for
Mathematical Accuracy
ATHENS COUNTY
ENGINEERS OFFICE
By: Donna McLean
DATE: 4-24-97

Athens Twp Lot 20 #26



SURVEY OF A 0.158 ACRE TRACT
 OUT OF LOT 20 OF HEATHERSTONE
 SUBDIVISION SECTION 26, T.9, R.14,
 ATHENS TWP, ATHENS CO., O.

SURVEYED SEPTEMBER 1997
John M. Branner
 JOHN M. BRANNER P.S. 6805
 12500 N. PEACH RIDGE ROAD
 ATHENS, OHIO

Description checked for
 Mathematical Accuracy
 ATHENS COUNTY
 ENGINEER'S OFFICE
 BY: Donna McLean
 DATE: 9-24-97



48