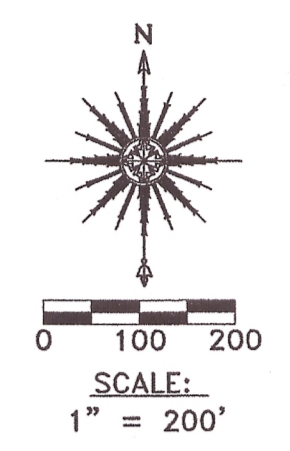
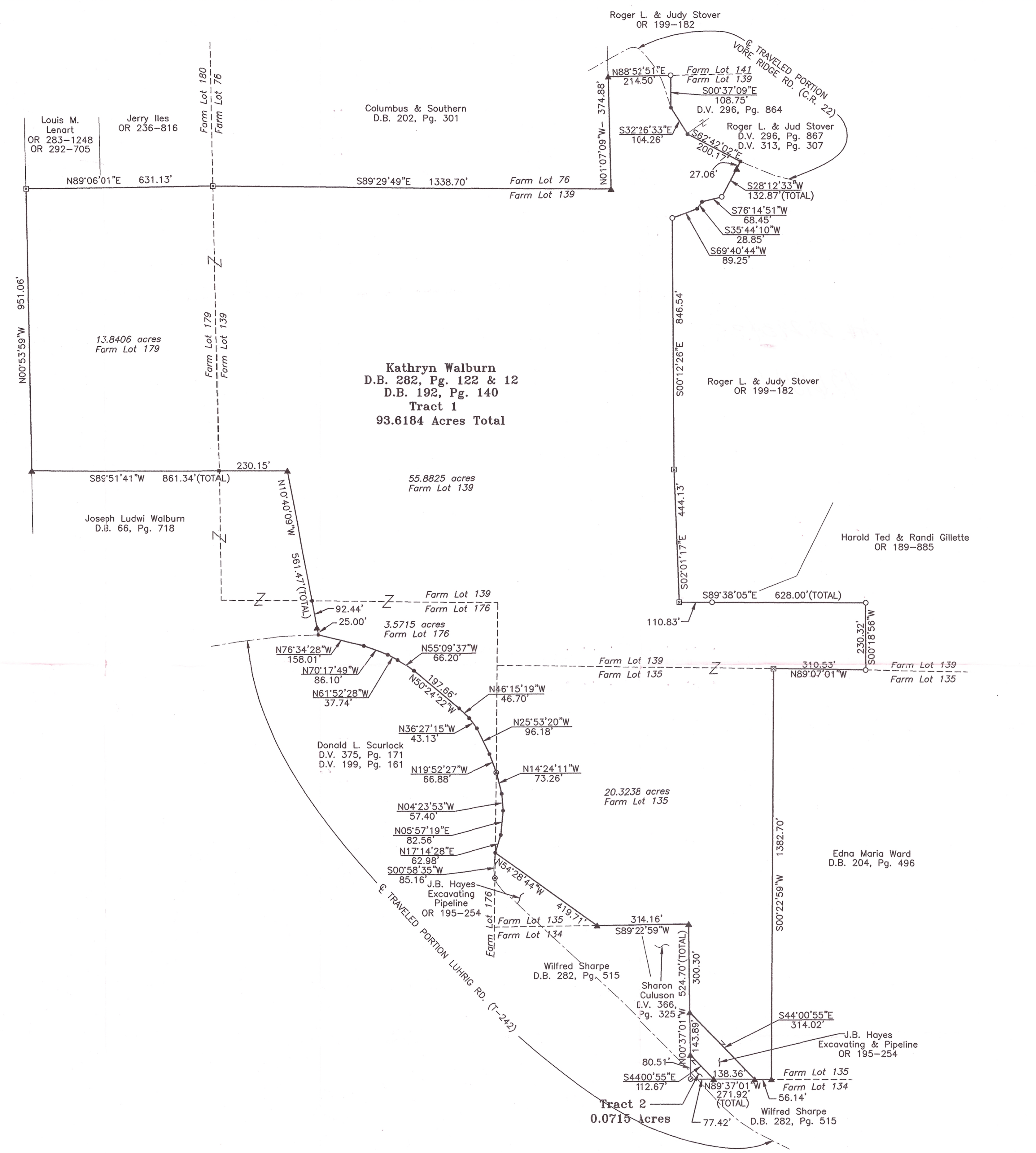




PLAT OF SURVEY

SITUATED IN THE STATE OF OHIO;
 COUNTY OF ATHENS, TOWNSHIP OF ATHENS,
 AND BEING A PART OF FARM LOTS 135, 139, 176, AND 179
 LOCATED IN SECTIONS 28, 29, 34 AND 35,
 T-10-N, R-14-W.
Terry Walburn

REVISIONS	DATE
	12/30/04
	12/30/04
	12/30/04
	12/30/04



REFERENCES:
 County tax maps
 Deeds as noted
 Previous surveys

BASIS OF BEARINGS:
 Bearings derived from monumentation found on the North line of Farm Lot 179 as bearing North 89 degrees 06 minutes 01 seconds East and are for the determination of angles only.

LEGEND

- Point
- ▲ 5/8" x 30" iron pin with 1-1/4" plastic ID cap stamped SEYMOUR & ASSOC. set
- 5/8" iron pin with ID cap stamped SWOYER-6765 found
- MAG nail set
- 60 penny spike set
- Stone found with X

Athens County commissioners
 D.B. 202, Pg. 301

Description Checked for
 Mathematical Accuracy
 Athens County
 ENGINEER'S OFFICE
 BY: *S. M. ...*
 DATE: 12-2-04

I HEREBY CERTIFY THAT THIS PLAT WAS PREPARED FROM AN ACTUAL FIELD SURVEY OF THE PREMISES IN DECEMBER OF 2004 AND FROM EXISTING PUBLIC RECORDS AND THAT SAID PLAT CORRECTLY SHOWS THE LIMITS OF THE PARCEL TO BE CONVEYED.

THIS CERTIFICATION WAS MADE BY ME ON THIS 31 DAY OF DECEMBER, 2004.

George F. Seymour
 GEORGE F. SEYMOUR
 OHIO PROFESSIONAL SURVEYOR NO. 6044
 ©2004 SEYMOUR & ASSOCIATES