

Description of a 6.368 acre tract

Situated in L.L. 18, Section 3, T.9, R.14, Athens Township, Athens County, Ohio and being more particularly described as follows:

Beginning at a point at the South-west corner of L.L. 18

Thence, along the west-line of L.L. 18, N 0°00'00" E, 795.57' to a point, passing an iron pin found at 719.28' feet;

Thence, along the lines of a 8.60 acre tract:

S 55°40'46" E, 146.26'

S 50°35'28" E, 167.44'

N 75°28'42" E, 110.92' to a rail road spike found in County Road 25;

Thence, along said road:

S 9°45'32" E 642.29' to a point to a point in South-line of L.L. 18;

Thence, along said line: S 89°48'02" W, 466.41 to the point of beginning and containing 6.368 acres.

Subject to all easements and rights of way of record

The above description is based on a field survey by John M. Branner P.S. 6805 completed September 2003.



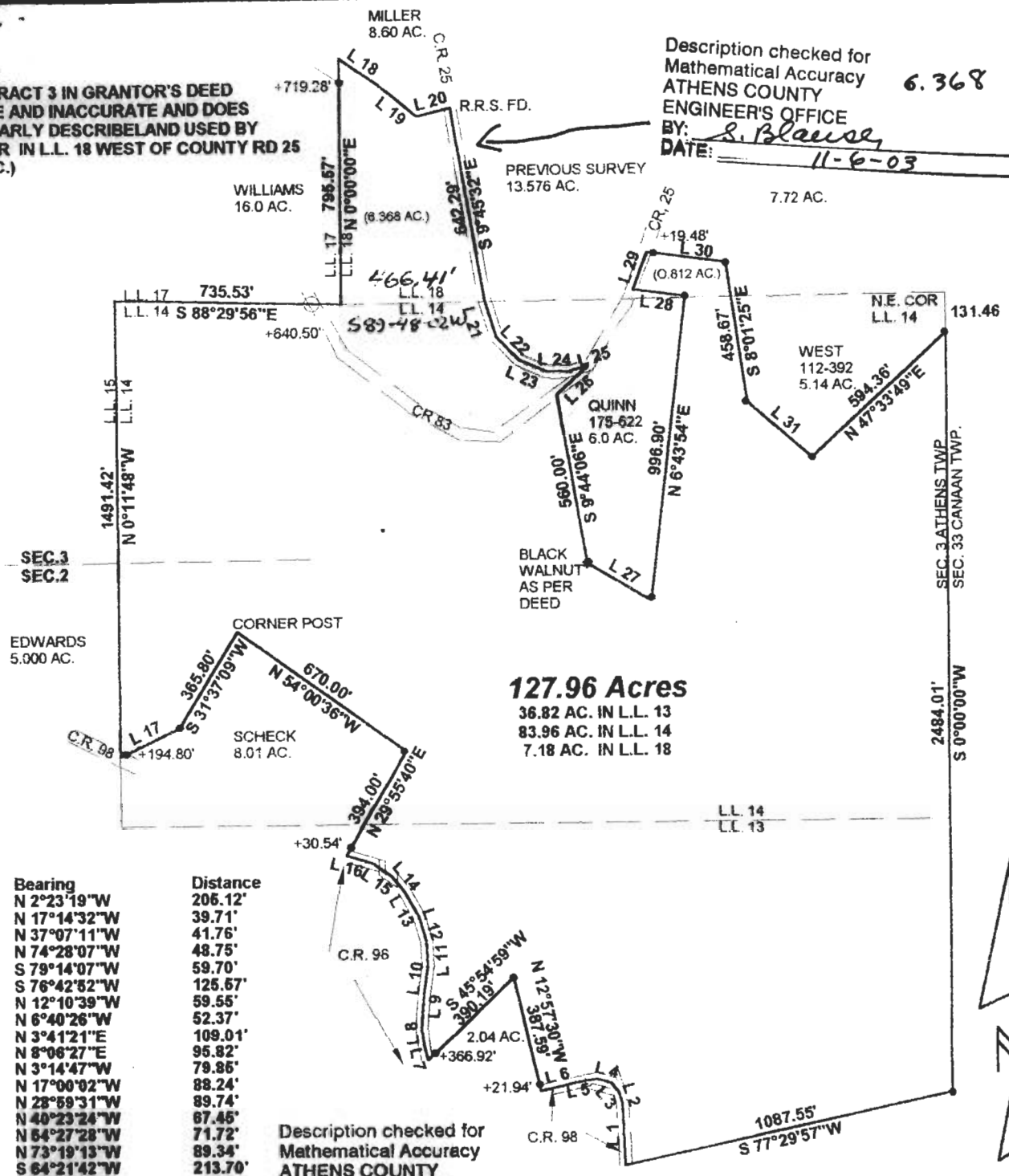
Description checked for
Mathematical Accuracy
ATHENS COUNTY
ENGINEERS OFFICE
BY: S. Klaus
DATE: 11-6-03



ATH #
3

NOTE: TRACT 3 IN GRANTOR'S DEED IS VAGUE AND INACCURATE AND DOES NOT CLEARLY DESCRIBE LAND USED BY GRANTOR IN L.L. 18 WEST OF COUNTY RD 25 (6.368 AC.)

Description checked for Mathematical Accuracy
ATHENS COUNTY ENGINEER'S OFFICE
BY: *S. Blause*
DATE: 11-6-03



127.96 Acres
36.82 AC. IN L.L. 13
83.96 AC. IN L.L. 14
7.18 AC. IN L.L. 18

Line	Bearing	Distance
1	N 2°23'19"W	206.12'
2	N 17°14'32"W	39.71'
3	N 37°07'11"W	41.76'
4	N 74°28'07"W	48.75'
5	S 79°14'07"W	59.70'
6	S 76°42'52"W	125.67'
7	N 12°10'39"W	59.55'
8	N 6°40'26"W	52.37'
9	N 3°41'21"E	109.01'
10	N 8°06'27"E	95.82'
11	N 3°14'47"W	79.85'
12	N 17°00'02"W	88.24'
13	N 28°59'31"W	89.74'
14	N 40°23'24"W	67.45'
15	N 64°27'28"W	71.72'
16	N 73°19'13"W	89.34'
17	S 64°21'42"W	213.70'
18	S 56°40'46"E	146.26'
19	S 60°36'28"E	167.44'
20	N 75°28'42"E	110.92'
21	S 16°42'20"E	119.32'
22	S 44°26'33"E	106.17'
23	S 66°34'50"E	93.30'
24	S 88°03'38"E	72.33'
25	N 73°30'50"E	67.01'
26	S 47°10'23"W	137.18'
27	S 69°12'06"E	240.46'
28	N 81°44'11"W	168.06'
29	N 19°53'14"E	129.30'
30	S 81°45'16"E	259.70'
31	S 48°55'36"E	278.10'

Description checked for Mathematical Accuracy
ATHENS COUNTY ENGINEER'S OFFICE
BY: *S. Blause*
DATE: 9-3-03

LARRY A. SHERIDAN
51-278
14.50 AC.

SURVEY OF A 127.958 ACRE TRACT
SECTION 2 & 3 L.L. 13, 14, 18, T.9, R.14
ATHENS TOWNSHIP
ATHENS COUNTY, OHIO
SURVEYED SEPT, 2003

BY: *[Signature]*
JOHN M. BRANNER P.S. 6805
12500 N. PEACH RIDGE ROAD
ATHENS, OHIO 45701
(740) 592-5778



SCALE 1 INCH = 500 FEET
● = IRON PIN FOUND
○ = IRON PIN SET
BEARING USED TO DENOTE INTERIOR ANGLES ONLY