

Exhibit "A"

Description Checked for  
Mathematical Accuracy  
Athens County  
ENGINEER'S OFFICE

BY: Frank William  
DATE: 12/28/15

**OHIO FRANKLIN REALTY, LLC  
POSTON COAL LANDS  
ATHENS AND WATERLOO TOWNSHIPS  
ATHENS COUNTY, OHIO  
AUCTION PARCEL**

Legal Description Pre-Approval  
**APPROVED**  
All transfers are subject to  
Athens County Conveyance Standards

APR 08 2016

**LASKO: 48.446 ACRES**

Jill Thompson  
Athens County Auditor

Situated in the State of Ohio, County of Athens, Townships of Athens and Waterloo, bounded and described as follows:

Being a part of AEP Parcel 102-A-35 in the Northeast Quarter of Section 3, Waterloo Township, Township 11, Range 15, and being part of AEP Parcel 102-A-39 in the Northwest Quarter of Section 33, Athens Township, Township 9, Range 14, and being part of AEP Parcel 102-A-40 in the Southwest Quarter of Section 34, Athens Township, Township 9, Range 14, Ohio Company Lands, within lands now owned by Ohio Franklin Realty, LLC (DR 503-2282), and more particularly described as follows:

Beginning at an iron pin found on the Northwest corner of Section 3, Waterloo Township;

thence along the east line of lands now owned by The Athens Conservancy (OR 461-300), North 05 degrees 46 minutes 20 seconds East 132.27 feet to a point on the centerline of Salem Road (CR-9), passing an iron pin set at 107.27 feet;

thence along said centerline of Salem Road, the following fifty six courses:

- 1) South 83 degrees 29 minutes 49 seconds East 37.27 feet to a point;
- 2) South 79 degrees 34 minutes 48 seconds East 50.26 feet to a point;
- 3) South 83 degrees 27 minutes 31 seconds East 34.59 feet to a point;
- 4) South 88 degrees 46 minutes 01 seconds East 32.07 feet to a point;
- 5) North 87 degrees 45 minutes 27 seconds East 69.00 feet to a point;
- 6) North 87 degrees 36 minutes 37 seconds East 79.38 feet to a point;
- 7) South 84 degrees 22 minutes 38 seconds East 51.95 feet to a point;
- 8) South 73 degrees 47 minutes 58 seconds East 37.96 feet to a point;
- 9) South 62 degrees 57 minutes 35 seconds East 34.51 feet to a point;
- 10) South 53 degrees 54 minutes 40 seconds East 34.19 feet to a point;
- 11) South 45 degrees 14 minutes 43 seconds East 33.04 feet to a point;
- 12) South 34 degrees 38 minutes 24 seconds East 44.67 feet to a point;

- 13) South 21 degrees 50 minutes 01 seconds East 36.33 feet to a point;
- 14) South 09 degrees 52 minutes 54 seconds East 59.32 feet to a point;
- 15) South 04 degrees 27 minutes 10 seconds East 90.42 feet to a point;
- 16) South 05 degrees 35 minutes 24 seconds East 92.60 feet to a point;
- 17) South 11 degrees 18 minutes 08 seconds East 44.29 feet to a point;
- 18) South 14 degrees 10 minutes 28 seconds East 99.60 feet to a point;
- 19) South 20 degrees 08 minutes 10 seconds East 67.86 feet to a point;
- 20) South 26 degrees 18 minutes 16 seconds East 102.25 feet to a point;
- 21) South 26 degrees 51 minutes 53 seconds East 73.56 feet to a point;
- 22) South 23 degrees 52 minutes 31 seconds East 42.69 feet to a point;
- 23) South 14 degrees 18 minutes 36 seconds East 36.53 feet to a point;
- 24) South 06 degrees 54 minutes 43 seconds East 41.38 feet to a point;
- 25) South 01 degrees 09 minutes 31 seconds East 50.44 feet to a point;
- 26) South 00 degrees 17 minutes 47 seconds East 63.78 feet to a point;
- 27) South 05 degrees 17 minutes 03 seconds East 30.62 feet to a point;
- 28) South 09 degrees 40 minutes 42 seconds East 41.88 feet to a point;
- 29) South 15 degrees 17 minutes 15 seconds East 27.88 feet to a point;
- 30) South 20 degrees 24 minutes 54 seconds East 83.74 feet to a point;
- 31) South 19 degrees 48 minutes 29 seconds East 35.77 feet to a point;
- 32) South 18 degrees 41 minutes 45 seconds East 29.86 feet to a point;
- 33) South 14 degrees 24 minutes 26 seconds East 45.70 feet to a point;
- 34) South 10 degrees 55 minutes 36 seconds East 35.19 feet to a point;
- 35) South 05 degrees 44 minutes 15 seconds East 40.11 feet to a point;
- 36) South 02 degrees 37 minutes 44 seconds East 50.80 feet to a point;
- 37) South 03 degrees 29 minutes 57 seconds West 50.79 feet to a point;
- 38) South 09 degrees 59 minutes 39 seconds West 57.22 feet to a point;
- 39) South 16 degrees 50 minutes 27 seconds West 39.90 feet to a point;
- 40) South 22 degrees 01 minutes 08 seconds West 37.69 feet to a point;
- 41) South 28 degrees 36 minutes 22 seconds West 73.58 feet to a point;
- 42) South 30 degrees 57 minutes 58 seconds West 131.42 feet to a point;
- 43) South 30 degrees 53 minutes 22 seconds West 43.59 feet to a point;
- 44) South 23 degrees 33 minutes 16 seconds West 36.78 feet to a point;
- 45) South 12 degrees 52 minutes 41 seconds West 35.76 feet to a point;
- 46) South 01 degrees 23 minutes 17 seconds West 45.41 feet to a point;
- 47) South 10 degrees 54 minutes 40 seconds East 44.80 feet to a point;
- 48) South 19 degrees 48 minutes 29 seconds East 166.82 feet to a point;
- 49) South 22 degrees 44 minutes 47 seconds East 88.84 feet to a point;
- 50) South 26 degrees 32 minutes 52 seconds East 74.66 feet to a point;
- 51) South 33 degrees 19 minutes 33 seconds East 68.91 feet to a point;
- 52) South 38 degrees 39 minutes 58 seconds East 85.63 feet to a point;
- 53) South 37 degrees 07 minutes 22 seconds East 49.84 feet to a point;
- 54) South 32 degrees 54 minutes 30 seconds East 36.39 feet to a point;

- 55) South 28 degrees 03 minutes 17 seconds East 34.06 feet to a point;
- 56) South 22 degrees 21 minutes 25 seconds East 44.24 feet to a point;

thence leaving said Salem Road and along the north line of Farm Lot 169, North 87 degrees 41 minutes 33 seconds West 404.75 feet to an iron pin set, passing an iron pin found at 32.91 feet;

thence along the east line of lands now owned by Janet E. Ulakovic (DR 282-781) and Judith A. Brown (DR 317-661), North 03 degrees 30 minutes 28 seconds East 795.95 feet to an iron pin set;

thence along the north line of said Brown land, North 87 degrees 39 minutes 01 seconds West 660.00 feet to an iron pipe found;

thence through said Ohio Franklin Realty lands (DR 503-2282), North 87 degrees 39 minutes 01 seconds West 507.30 feet to an iron pin set;

thence along the east line of lands now owned by A. W. Taylor, etal (DR 351-379), North 03 degrees 34 minutes 27 seconds East 1493.38 feet to a point on said centerline of Salem Road, passing an iron pin set at 1424.17 feet;

thence leaving said Salem Road, South 41 degrees 19 minutes 36 seconds East 48.67 feet to an iron pin set along the south line of lands now owned by The Athens Conservancy (DR 461-300);

thence along said south line, North 48 degrees 40 minutes 51 seconds East 152.13 feet to an iron pin set along the north line of said Section 3, Waterloo Township;

thence along said section line, South 86 degrees 15 minutes 02 seconds East 354.58 feet to the place of beginning, containing 48.446 acres, more or less;

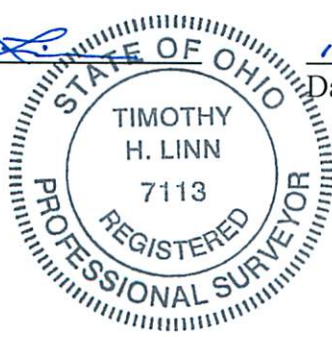
Subject to all easements and right of ways, written or implied.

Bearings are based on the Ohio State Plane Coordinate System, South Zone, North American Datum 1983, as per GPS observations made March 16, 2015.

This description is written based on field and record data and completed April 30, 2015 by Linn Engineering, Inc.

  
Timothy H. Linn, PS  
Reg. No. 7113

11/23/15  
Date



Faint, illegible text, likely bleed-through from the reverse side of the page.



11/20/12

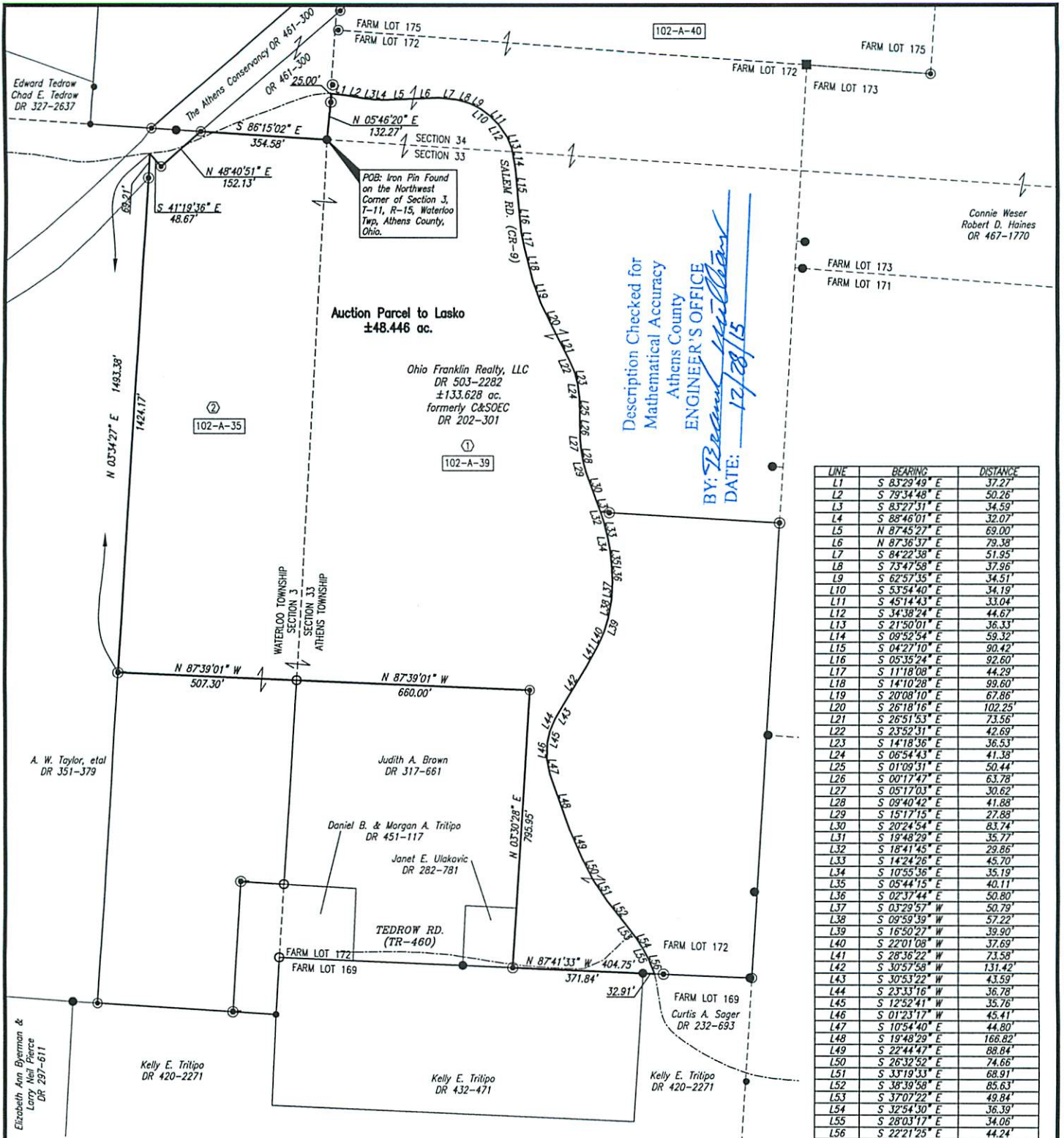
Parcel No.

Part of: A040040003700 ( $\pm 30.668$  ac.)

Part of: N020020016900 ( $\pm 17.778$  ac.)

Total ( $\pm 48.446$  ac.)

Exhibit "B"



Description Checked for  
Mathematical Accuracy  
Athens County  
ENGINEER'S OFFICE  
BY: *Timothy H. Linn*  
DATE: 12/28/15

Connie Weser  
Robert D. Haines  
OR 467-1770

Auction Parcel to Lasko  
±48.446 ac.

Ohio Franklin Realty, LLC  
DR 503-2282  
±133.628 ac.  
formerly C&SOEC  
DR 202-301

A. W. Taylor, etal  
DR 351-379

Judith A. Brown  
DR 317-661

Daniel B. & Morgan A. Trilipo  
DR 451-117

Janet E. Ulokovic  
DR 282-781

TEDROW RD.  
(TR-480)

FARM LOT 169  
Curtis A. Soger  
DR 232-693

Kelly E. Trilipo  
DR 420-2271

Kelly E. Trilipo  
DR 432-471

Kelly E. Trilipo  
DR 420-2271

PARCEL NO.

- ① Part of: A040040003700 (±30.668 AC.)
- ② Part of: N020020016900 (±17.778 AC.)

BASIS OF BEARING

Bearings are based on the Ohio State Plane Coordinate System, NAD83, South Zone, Grid South, as per GPS observations made 3/16/15.

SITUATED IN

Northeast Quarter of Section 3 of Waterloo Twp., T-11, R-15, and Southwest Quarter of Section 34, Farm Lot 172, and the Northwest Quarter of Section 33, Farm Lot 172, Athens Twp., T-9, R-14, Ohio Company Lands, Athens County, Ohio.

REFERENCES

As shown on Plat.

LEGEND

- Pipe Found
- ⊙ Iron Pin Set, 5/8" rebar
- Iron Pin Found, 5/8" rebar
- ⊗ PK Nail Set
- ⊕ Wooden Post
- ⊠ Concrete Monument Found
- Stone Found
- △ Railroad Spike Set
- ▲ Railroad Spike Found
- Axle Found
- P.O.B. Place of Beginning
- P.P.O.B. Principal Place of Beginning
- Property Line
- 102-A-46 AEP Parcel Numbers
- C&SOEC Columbus & Southern Ohio Electric Company



*Timothy H. Linn*  
Timothy H. Linn, PS  
Reg. Surveyor No. 7113

11/23/15  
Date

Project No.: AEP-1516

150' 0 300'		
Revision	Description	Date
Drawn by:	JAP	
Checked by:	THL	
Scale:	1"=300'	Sheet No. 1 of 1

OHIO FRANKLIN REALTY, LLC  
POSTON COAL LANDS  
AUCTION PARCEL: LASKO  
±48.446 ac.

Linn Engineering, Inc. 740-452-7434  
Civil Engineering Consultants  
P.O. Box 2086 Zanesville, Ohio 43702-2086

ENCLOSURE ZONE  
WILSON CORP  
7190 SOUTHWEST AVENUE  
DUNCANVILLE, TEXAS 75041



THE STATE OF OHIO  
COUNTY OF [illegible]  
I, [illegible], County Clerk of said County, do hereby certify that the within and foregoing is a true and correct copy of the original as the same appears in the records of said County.

IN WITNESS WHEREOF, I have hereunto set my hand and the seal of said County at [illegible] this [illegible] day of [illegible] 19[illegible].

*[Handwritten signature]*

7-28-42