

**BRANNER SURVEYING
12500 N. PEACH RIDGE ROAD
ATHENS, OHIO 45701**

Situated in L.L. 203 and L.L. 207 , Section 6, T.9, R.14, Athens Township, Athens County, Ohio and being more particularly described as follows:

Beginning at an iron pin at the South -east corner of a 5.43 acre tract, said pin bearing South 49 degrees 57 minutes 58 seconds West, 1741.10 feet from the North-east corner of L.L. 203 ;

Thence, along the East-line of said 5.43 acre tract, North 38 degrees 57 minutes 27 seconds West, 955.03 feet to a rail iron found in Peach Ridge Road;

Thence, along said road, North 42 degrees 56 minutes 20 seconds East, 272.45 feet to a point;

Thence, North 56 degrees 57 minutes 32 seconds East, 144.14 feet to a point;

Thence, leaving said road, South 22 degrees 24 minutes 37 seconds East, 389.49 feet to an iron pin set;

Thence, North 63 degrees 49 minutes 13 seconds East, 423.75 feet to an iron pin set;

Thence, South 11 degrees 12 minutes 12 seconds East, 1026.64 feet to an existing iron pin at the South-west corner of a 14.52 acre tract;

Thence, North 84 degrees 09 minutes 40 seconds West, 201.80 feet to an iron pin;

Thence, North 59 degrees 14 minutes 00 seconds West, 271.68 feet to the point of beginning and containing 13.277 acres

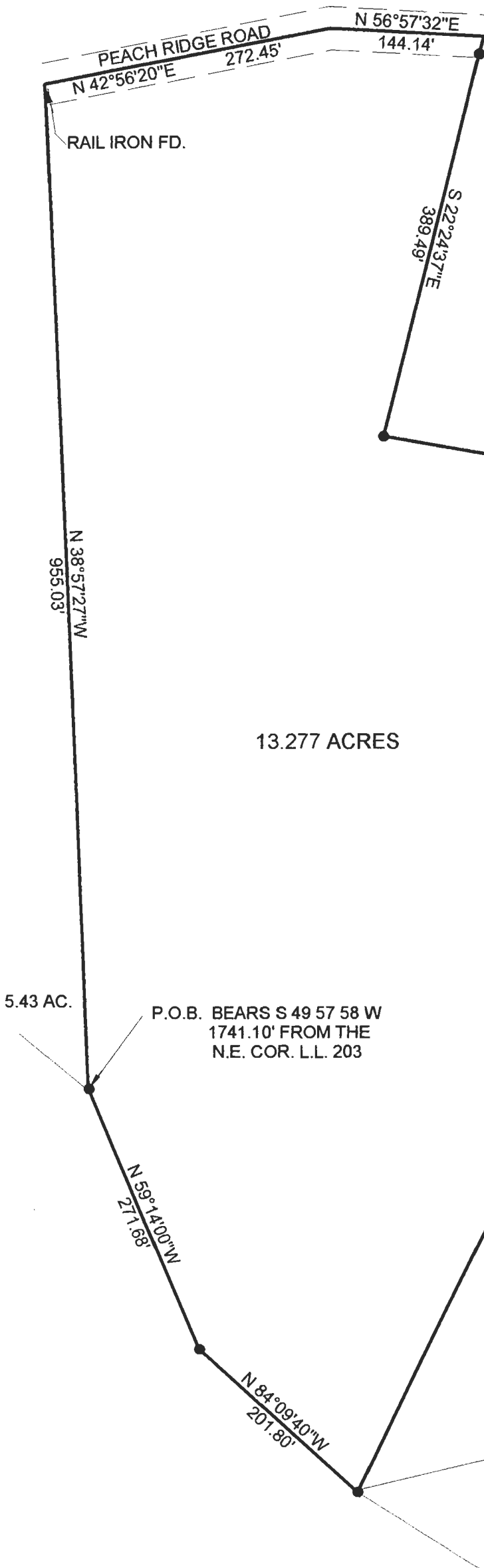
The above description is based on a field survey by John M. Branner P.S. 6805



Description checked for
Mathematical Accuracy
ATHENS COUNTY
ENGINEER'S OFFICE

BY: S. Blawie
DATE: 12-28-00

000001



WILSON

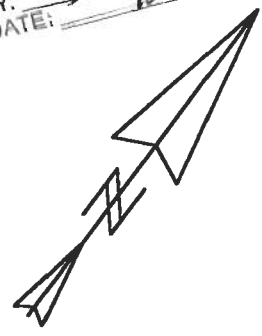
13.277 ACRES

5.43 AC.

P.O.B. BEARS S 49 57 58 W
1741.10' FROM THE
N.E. COR. L.L. 203

14.52 AC.

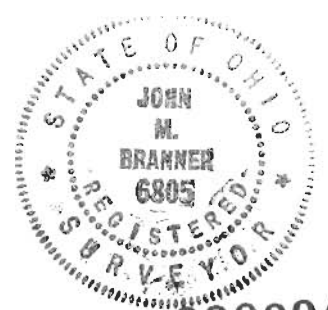
Description checked for
Mathematical Accuracy
ATHENS COUNTY
ENGINEER'S OFFICE
BY: *S. Blaus*
DATE: *12-28-00*



SCALE 1 INCH = 1200 FEET
● = IRON PIN SET

SURVEY OF A 13.277 ACRE TRACT
SECTION 6 , T.9 , R.14 ,ATHENS TOWNSHIP
ATHENS COUNTY, OHIO
SURVEYED DEC. 2000

BY: *John M. Branner*
JOHN M. BRANNER P.S. 6805
12500 N. PEACH RIDGE ROAD
ATHENS, OHIO 45701
(740) 592-5778



000004

ATH #6