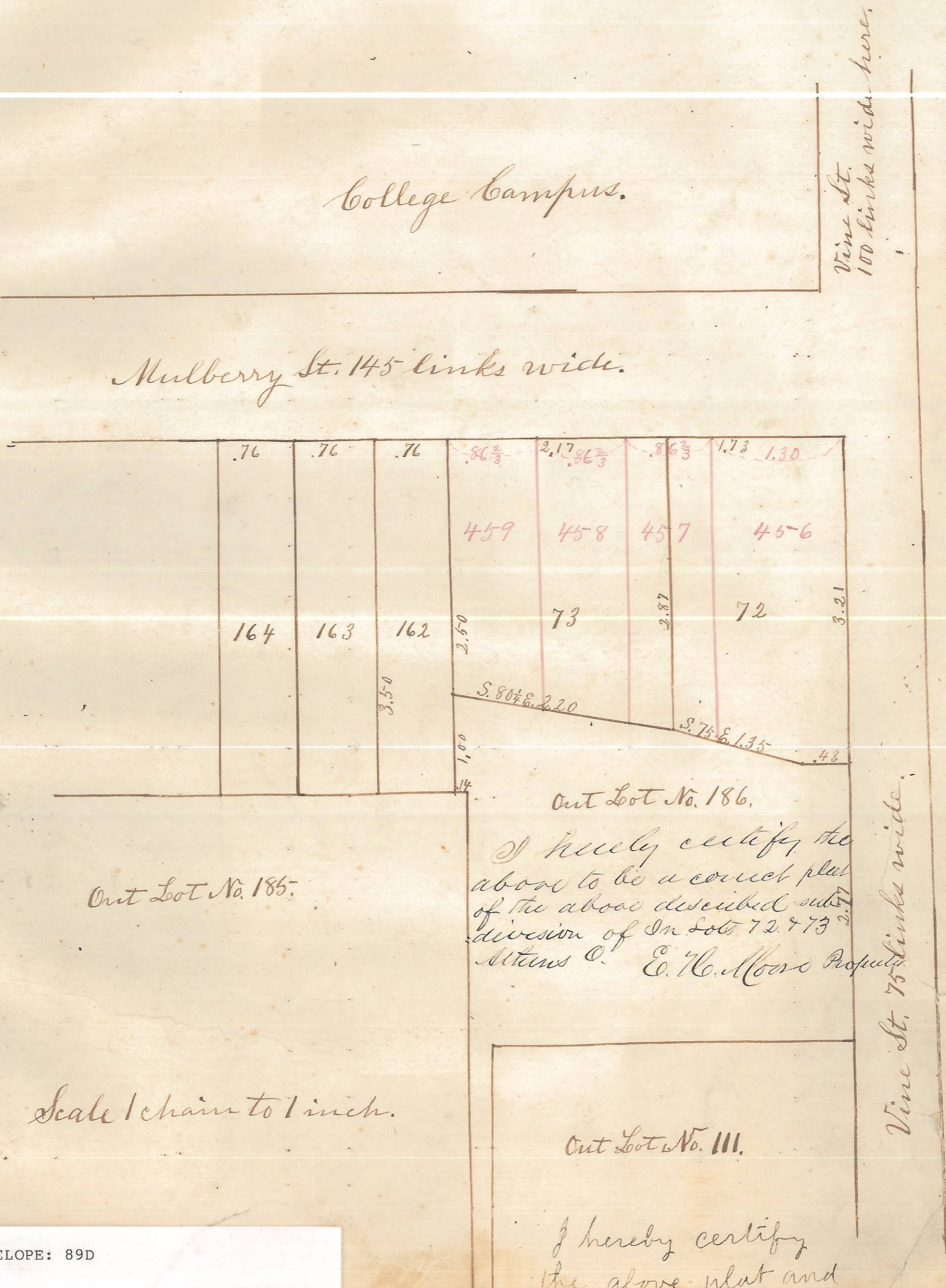


Plot of In Lots 456, 457, 458 and 459, being the subdivisions of In Lots 72 and 73. In Lots 72 and 73 with the adjacent lots and streets are represented in black ink; the subdivision lines with the numbers and widths of the subdivisions are in red ink.



Out Lot No. 185.

Out Lot No. 186.

I hereby certify the above to be a correct plat of the above described subdivision of In Lots 72 & 73.  
Witness C. E. H. Moore Property

Scale 1 chain to 1 inch.

Out Lot No. III.

I hereby certify the above plat and notes to be correct.  
John Ackley  
Surveyor

ENVELOPE: 89D  
ATHENS- SUBDIVISION OF  
INLOTS 72 & 73 -  
ADDITION to