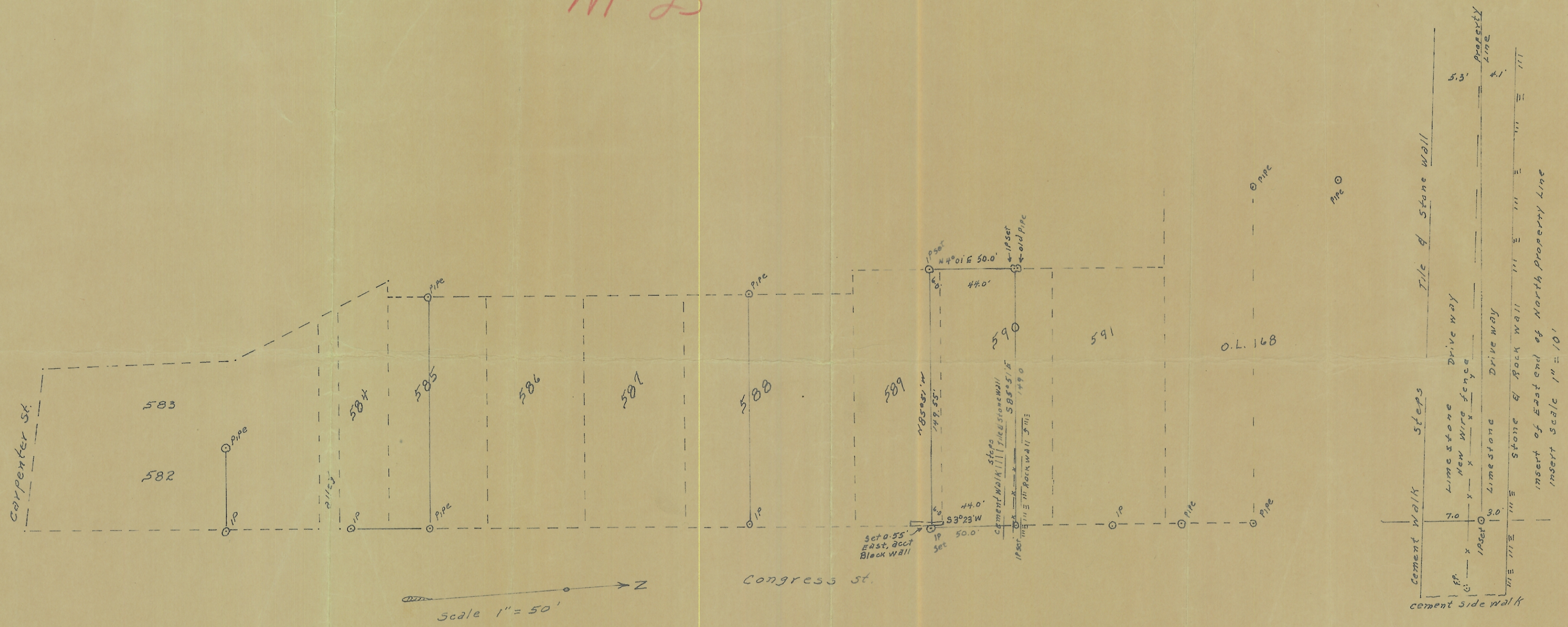


JG Sec 10
 IL 589 Athens City
 590
 M-23



PLAT
 of a part of lots 589 & 590 in subdivision of O.L. 128
 Located in Section 10, T. 9, R. 14, Athens Twp. Athens Co. O.
 in the City of Athens
 surveyed for E. M. Conant 5-28-1962
 by Joe L. Galvin
 Reg. Sur. 1684.

