

N-27

# PLA SURVEY HARVE J. SMITH ESTATE

INLOTS 2408 & 2409  
ALDERMAN'S SUBDIVISION OF OUTLOT 3

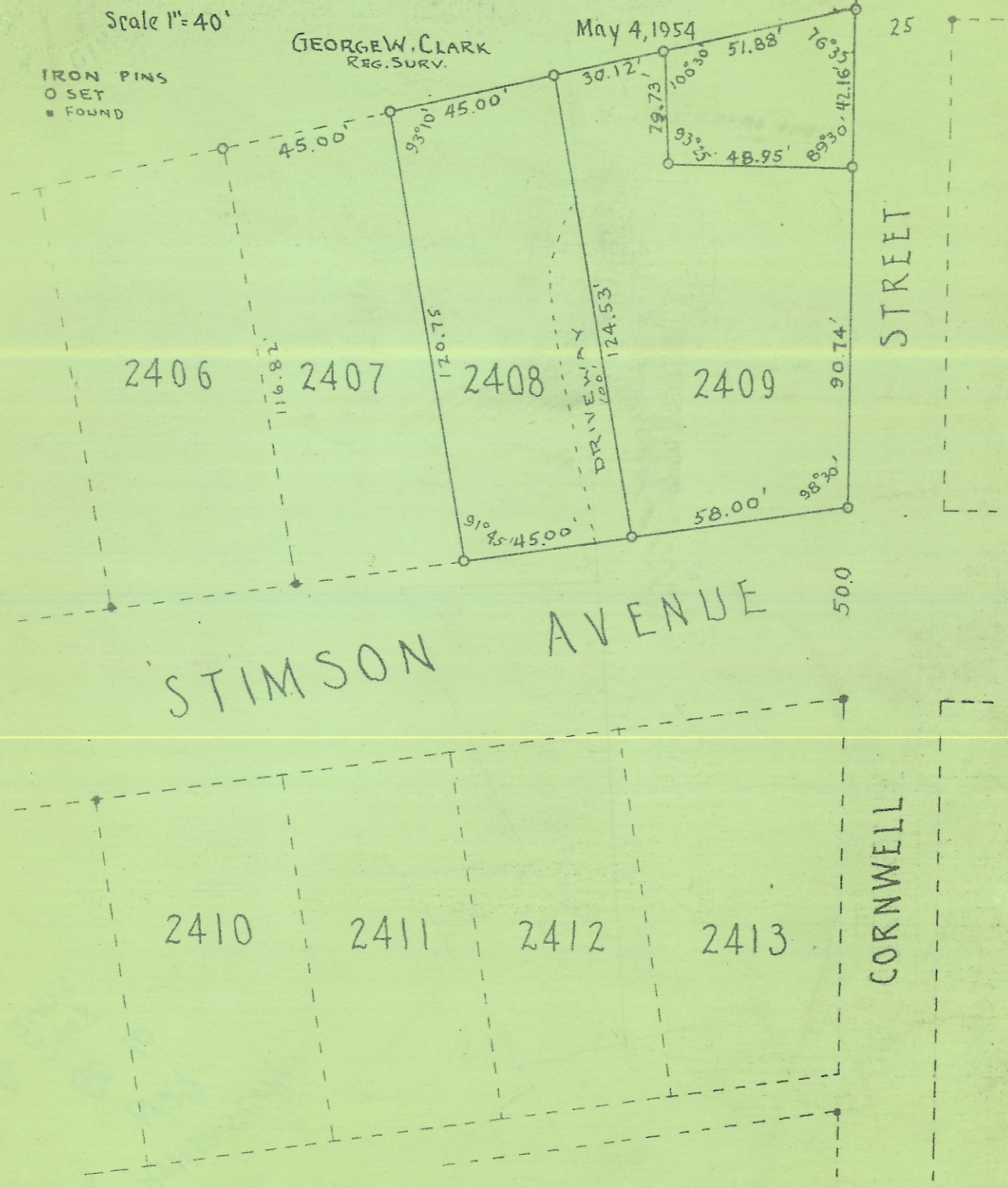
## ATHENS, OHIO

Scale 1"=40'

GEORGE W. CLARK  
REG. SURV.

May 4, 1954

IRON PINS  
O SET  
■ FOUND



2406

2407

2408

2409

STIMSON AVENUE

STREET

CORNWELL

2410

2411

2412

2413

50.0

25

45.00'

45.00'

93°10'

170.75'

116.82'

45.00'

91°

DRIVEWAY  
124.53'

30.12'

79.73'

106°30'

51.88'

48.95'

58.00'

98°30'

90.74'

76°35'

69°30'

42.16'