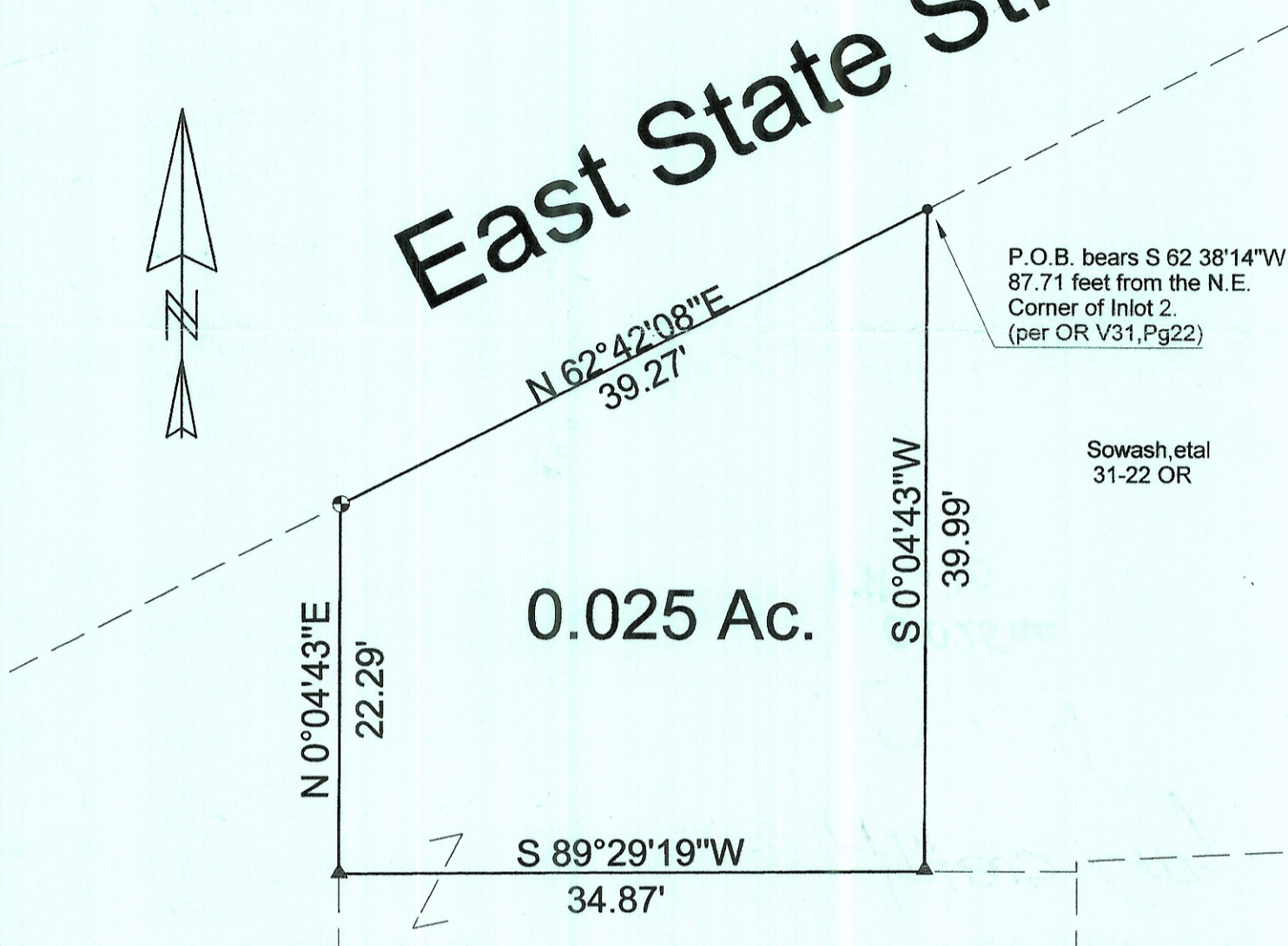


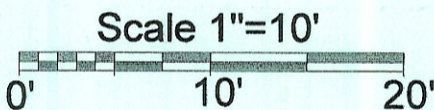
East State St.



P.O.B. bears S 62°38'14"W,
87.71 feet from the N.E.
Corner of Inlot 2.
(per OR V31, Pg22)

Sowash, etal
31-22 OR

PLC Ohio
Properties,
LLC
366-2657 OR



Mollica, Gall, etal.
99-472 OR

- =Iron Pin Found
- ▲ =Railroad Spike Set
- ⊕ =P.K. Nail Set

Description Checked for
Mathematical Accuracy
Athens County
ENGINEER'S OFFICE

BY: S. Blawie
DATE: 4-10-08

PLAT OF SURVEY OF A 0.025 Ac. TRACT

SURVEYED FOR _____

SUBDIVISION Inlot 2

TOWNSHIP ATHENS SECTION - TOWN 9 RANGE 14

CORPORATION ATHENS COUNTY ATHENS STATE OHIO

SCALE 1"= 10' DATE APRIL 2008

Kenneth E. Highland
80 Fayette St.
Nelsonville, Ohio 45764
740-753-1264



Kenneth E. Highland S-7581