

Being a Part of out lots 64-68 and in lot 882
 Situated in the City of Athens, Athens County,
 State of Ohio

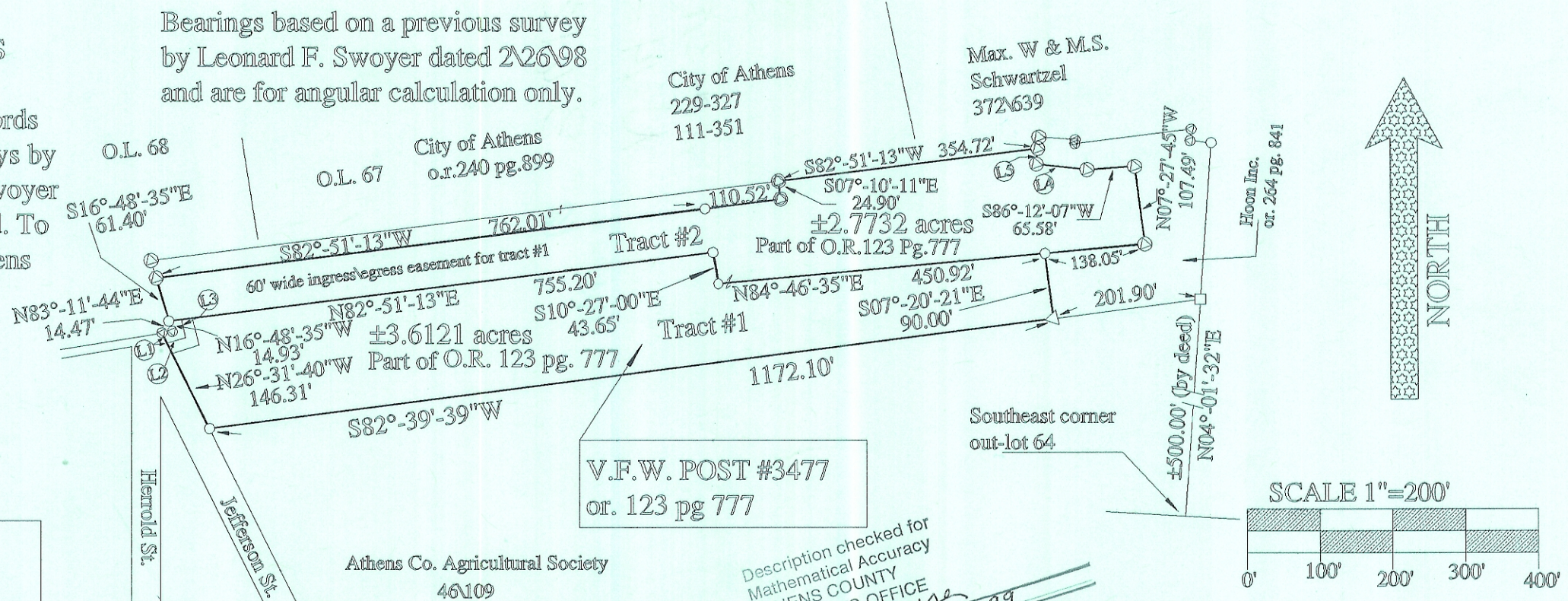
LEGEND

- = 5/8" iron pin set with I.D. cap
- ⊙ = 5/8" iron pin found with I.D. cap
- △ = railroad spike found
- = 4" square steel post found

REFERENCES

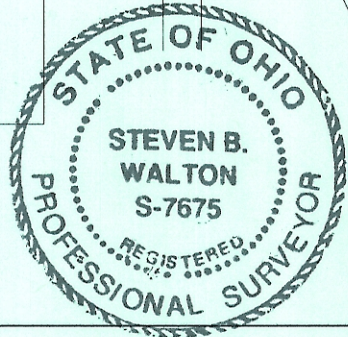
deeds as noted
 county tax records
 previous surveys by
 Leonard F. Swoyer
 J. Gleason Add. To
 the city of Athens

Bearings based on a previous survey
 by Leonard F. Swoyer dated 2/26/98
 and are for angular calculation only.



line data table

①	S26°-31'-40"E	15.93'
②	N83°-11'-44"E	26.97'
③	N16°-48'-35"W	30.25'
④	N83°-45'-17"W	70.04'
⑤	N05°-32'-42"E	21.76'

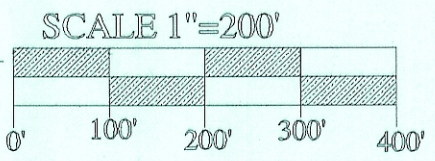


Athens Co. Agricultural Society
 46109

I hereby certify to the best of my knowledge and belief
 the foregoing plat to be correct as prepared by me on this
 12th day of June, 1999

Steven B. Walton
 Steven B. Walton, Ohio Professional Surveyor S-7675

Description checked for
 Mathematical Accuracy
 ATHENS COUNTY
 ENGINEER'S OFFICE
 BY: *S. Blaise*
 9-17-99



STEVEN B. WALTON
 SURVEYING & MAPPING
 730 MORGAN ROAD
 ZANESVILLE, OHIO 43701
 740-455-6383