

Plat of Survey of 3 Parcels:

Parcel 1 = 4.268 Acres
Parcel 2 = 1.609 Acres
Parcel 3 = 0.558 Acres

Located in O.L.(s) 114, 115, 116, 117 & 118 in the
City of Athens, Athens Township, T9N-R14W,
Athens County, Ohio.

PREPARED BY
SOUTHEASTERN LAND SURVEYS

For: Mr. Harold Laughlin August 27, 1987

Leonard F. Swoyer II Reg. Prof. Land Surveyor No. 6765

SCALE 1"=50'

- = l.p. fd.
- = l.p. set (capped, 3/8" rebar)
- = brass monument fd.
- ▲ = railroad spike set

MAPLE STREET

SOUTH SHAFER STREET

SMITH STREET

DETAIL MAP OF AREA
ENCIRCLED BELOW

PARCEL 1

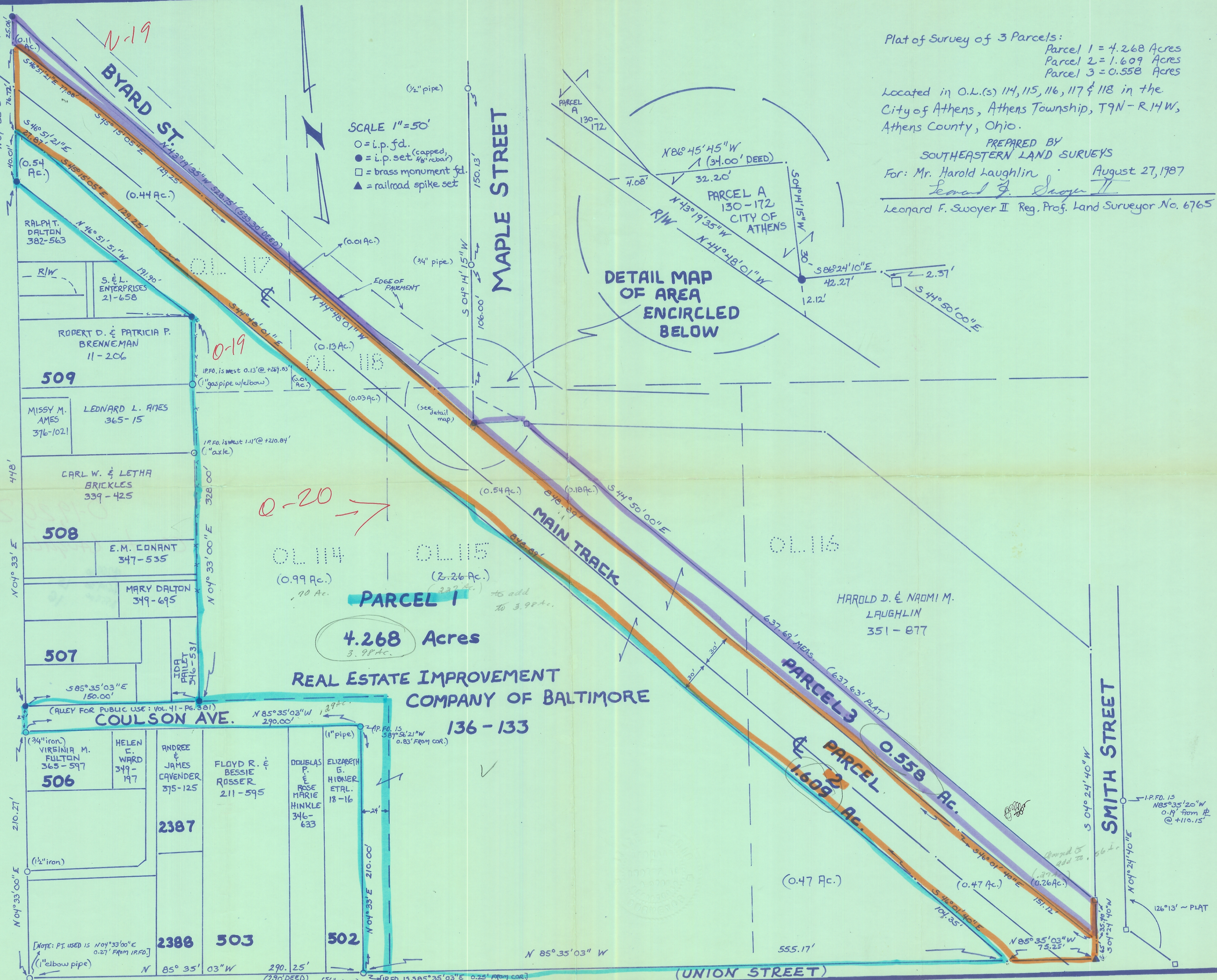
4.268 Acres

REAL ESTATE IMPROVEMENT
COMPANY OF BALTIMORE

136-133

PARCEL 3
0.558 Ac.

PARCEL 2
1.609 Ac.



0-20 →

N-19

0-19

1-36-87

578-8761

Cypress Run Road

1-116

[NOTE: PT. USED IS N04°33'00"E 0.27' FROM I.R.F.D.]

(1/2" iron)

(3/4" iron)

(ALLEY FOR PUBLIC USE: VOL. 41-PG. 381)

585°35'03"E 150.00'

N04°33'00"E

N04°33'1"E

478'

328.00'

191.90'

129.25'

76.72'

25.08'

40.01'

76.72'

25.08'

N04°33'E

N 85° 35' 03" W

290.25'

(3/8" rebar)

[I.R.F.D. IS 385°35'03"E 0.25' FROM COR.]

N 85° 35' 03" W

(UNION STREET)

(0.47 Ac.)

(0.47 Ac.)

(0.26 Ac.)

(0.26 Ac.)

S 04° 24' 40" W

126°13' ~ PLAT

N04°24'40"E

126°13' ~ PLAT

S 04° 24' 40" W

126°13' ~ PLAT

N04°24'40"E

126°13' ~ PLAT

S 04° 24' 40" W

126°13' ~ PLAT

N04°24'40"E

126°13' ~ PLAT

S 04° 24' 40" W

126°13' ~ PLAT

N04°24'40"E

126°13' ~ PLAT

S 04° 24' 40" W

126°13' ~ PLAT

N04°24'40"E

126°13' ~ PLAT

S 04° 24' 40" W

126°13' ~ PLAT

N04°24'40"E

126°13' ~ PLAT

S 04° 24' 40" W

126°13' ~ PLAT

N04°24'40"E

126°13' ~ PLAT

S 04° 24' 40" W

126°13' ~ PLAT

N04°24'40"E

126°13' ~ PLAT

S 04° 24' 40" W

126°13' ~ PLAT

N04°24'40"E

126°13' ~ PLAT

S 04° 24' 40" W

126°13' ~ PLAT

N04°24'40"E

126°13' ~ PLAT

S 04° 24' 40" W

126°13' ~ PLAT

N04°24'40"E

126°13' ~ PLAT

S 04° 24' 40" W

126°13' ~ PLAT

N04°24'40"E

126°13' ~ PLAT

S 04° 24' 40" W

126°13' ~ PLAT

N04°24'40"E

126°13' ~ PLAT

S 04° 24' 40" W

126°13' ~ PLAT

N04°24'40"E

126°13' ~ PLAT

S 04° 24' 40" W

126°13' ~ PLAT

N04°24'40"E

126°13' ~ PLAT

S 04° 24' 40" W

126°13' ~ PLAT

N04°24'40"E

126°13' ~ PLAT

S 04° 24' 40" W

126°13' ~ PLAT

N04°24'40"E

126°13' ~ PLAT

S 04° 24' 40" W

126°13' ~ PLAT

N04°24'40"E

126°13' ~ PLAT

S 04° 24' 40" W

126°13' ~ PLAT

N04°24'40"E

126°13' ~ PLAT

S 04° 24' 40" W

126°13' ~ PLAT

N04°24'40"E

126°13' ~ PLAT

S 04° 24' 40" W

126°13' ~ PLAT

N04°24'40"E

126°13' ~ PLAT

S 04° 24' 40" W

126°13' ~ PLAT

N04°24'40"E

126°13' ~ PLAT

S 04° 24' 40" W

126°13' ~ PLAT

N04°24'40"E

126°13' ~ PLAT

S 04° 24' 40" W

126°13' ~ PLAT

N04°24'40"E

126°13' ~ PLAT

S 04° 24' 40" W

126°13' ~ PLAT

N04°24'40"E

126°13' ~ PLAT

S 04° 24' 40" W

126°13' ~ PLAT

N04°24'40"E

126°13' ~ PLAT

S 04° 24' 40" W

126°13' ~ PLAT

N04°24'40"E

126°13' ~ PLAT

S 04° 24' 40" W

126°13' ~ PLAT

N04°24'40"E

126°13' ~ PLAT

S 04° 24' 40" W

126°13' ~ PLAT

N04°24'40"E

126°13' ~ PLAT

S 04° 24' 40" W

126°13' ~ PLAT

N04°24'40"E

126°13' ~ PLAT

S 04° 24' 40" W

126°13' ~ PLAT

N04°24'40"E

126°13' ~ PLAT

S 04° 24' 40" W

126°13' ~ PLAT

N04°24'40"E

126°13' ~ PLAT

S 04° 24' 40" W

126°13' ~ PLAT

N04°24'40"E

126°13' ~ PLAT

S 04° 24' 40" W

126°13' ~ PLAT

N04°24'40"E

126°13' ~ PLAT

S 04° 24' 40" W

126°13' ~ PLAT

N04°24'40"E

126°13' ~ PLAT

S 04° 24' 40" W

126°13' ~ PLAT

N04°24'40"E

126°13' ~ PLAT

S 04° 24' 40" W

126°13' ~ PLAT

N04°24'40"E

126°13' ~ PLAT

S 04° 24' 40" W

126°13' ~ PLAT

N04°24'40"E

126°13' ~ PLAT

S 04° 24' 40" W

126°13' ~ PLAT

N04°24'40"E

126°13' ~ PLAT

S 04° 24' 40" W

126°13' ~ PLAT

N04°24'40"E

126°13' ~ PLAT

S 04° 24' 40" W

126°13' ~ PLAT

N04°24'40"E

126°13' ~ PLAT

S 04° 24' 40" W

126°13' ~ PLAT

N04°24'40"E

126°13' ~ PLAT

S 04° 24' 40" W

126°13' ~ PLAT

N04°24'40"E

126°13' ~ PLAT

S 04° 24' 40" W

126°13' ~ PLAT

N04°24'40"E

126°13' ~ PLAT

S 04° 24' 40" W

126°13' ~ PLAT

N04°24'40"E

126°13' ~ PLAT

S 04° 24' 40" W

126°13' ~ PLAT

N04°24'40"E

126°13' ~ PLAT

S 04° 24' 40" W

126°13' ~ PLAT

N04°24'40"E

126°13' ~ PLAT

S 04° 24' 40" W

126°13' ~ PLAT

N04°24'40"E

126°13' ~ PLAT

S 04° 24' 40" W

126°13' ~ PLAT

N04°24'40"E

126°13' ~ PLAT

S 04° 24' 40" W

126°13' ~ PLAT

N04°24'40"E

126°13' ~ PLAT

S 04° 24' 40" W

126°13' ~ PLAT

N04°24'40"E

126°13' ~ PLAT

S 04° 24' 40" W

126°13' ~ PLAT

N04°24'40"E

126°13' ~ PLAT

S 04° 24' 40" W

126°13' ~ PLAT

N04°24'40"E

126°13' ~ PLAT

S 04° 24' 40" W

126°13' ~ PLAT

N04°24'40"E

126°13' ~ PLAT

S 04° 24' 40" W

126°13' ~ PLAT

N04°24'40"E

126°13' ~ PLAT

S 04° 24' 40" W

126°13' ~ PLAT

N04°24'40"E

126°13' ~ PLAT

S 04° 24' 40" W

126°13' ~ PLAT

N04°24'40"E

126°13' ~ PLAT