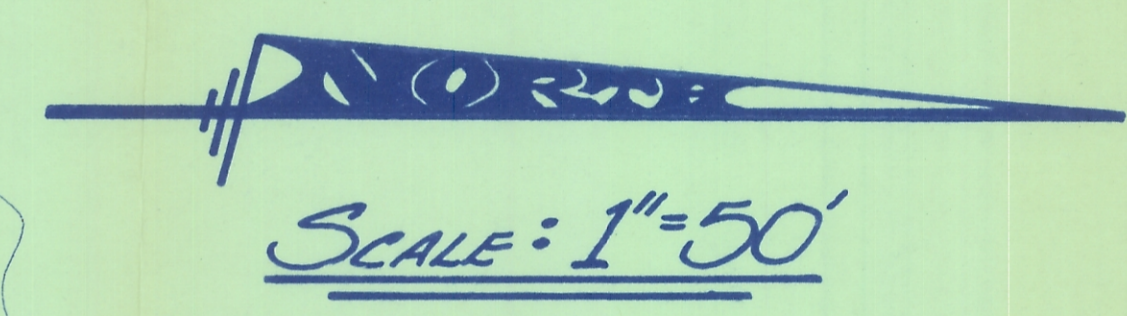
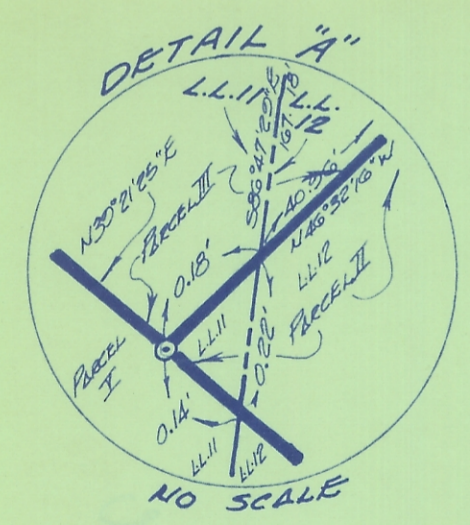


### PARCEL AREAS

PAR. NO.	TOTAL AREA	LEASE LOT 11	LEASE LOT 12	CITY OF ATH.	ATHENS TWP.	FIRST 289/TRACT 233	SECOND 289/TRACT 233
I	1.1651 Ac.	-0-	1.1651 Ac.	-0-	1.1651 Ac.	1.0706 Ac.	0.0945 Ac.
II	0.7628 Ac.	0.0000002 Ac.	0.7627998 Ac.	0.0268 Ac.	0.7360 Ac.	0.6264 Ac.	0.1364 Ac.
III	0.6915 Ac.	0.1103 Ac.	0.5812 Ac.	0.1420 Ac.	0.5495 Ac.	0.0495 Ac.	0.6420 Ac.
IV	0.9685 Ac.	0.8530 Ac.	0.1155 Ac.	0.6525 Ac.	0.3160 Ac.	-0-	0.9685 Ac.
V	0.3804 Ac.	0.2500 Ac.	0.1304 Ac.	0.2071 Ac.	0.0833 Ac.	0.0370 Ac.	0.3434 Ac.



<p>FOR:</p> <p style="text-align: center;"><b>Ms. VIRGINIA GRIFFIN</b> 51 LONGVIEW Hgts. ATHENS, OHIO 45701</p>	<p>BY:</p> <p style="text-align: center;"><b>GERALD W. BAYHA P.S.</b> REGISTERED PROFESSIONAL SURVEYOR No. 5-6139 Route No. 5 - Box No. 204 ATHENS OHIO ~ 45701 ..... (614) 592-4398</p>	<h1 style="margin: 0;">PLAT OF SURVEY</h1> <p style="font-size: small;">OF 5 TRACTS SITUATE IN LEASE LOTS 11 AND 12, SECTION 2, TOWN 9 - RANGE 14 - PARTIALLY IN THE CITY OF ATHENS, ATHENS TOWNSHIP, ATHENS COUNTY, OHIO.</p>		
<p>Drawn: <i>GB</i>    Checked: <i>GB</i>    Revisions:    Date: 17 Jun '76    Use No. 1275-06</p>		<table border="1" style="margin: 0 auto;"> <tr> <td style="width: 20px; height: 20px; border: 1px solid black; text-align: center;">1</td> </tr> <tr> <td style="width: 20px; height: 20px; border: 1px solid black; text-align: center;">1</td> </tr> </table> <p style="font-size: x-small; margin: 0;">Sht. No.</p>	1	1
1				
1				