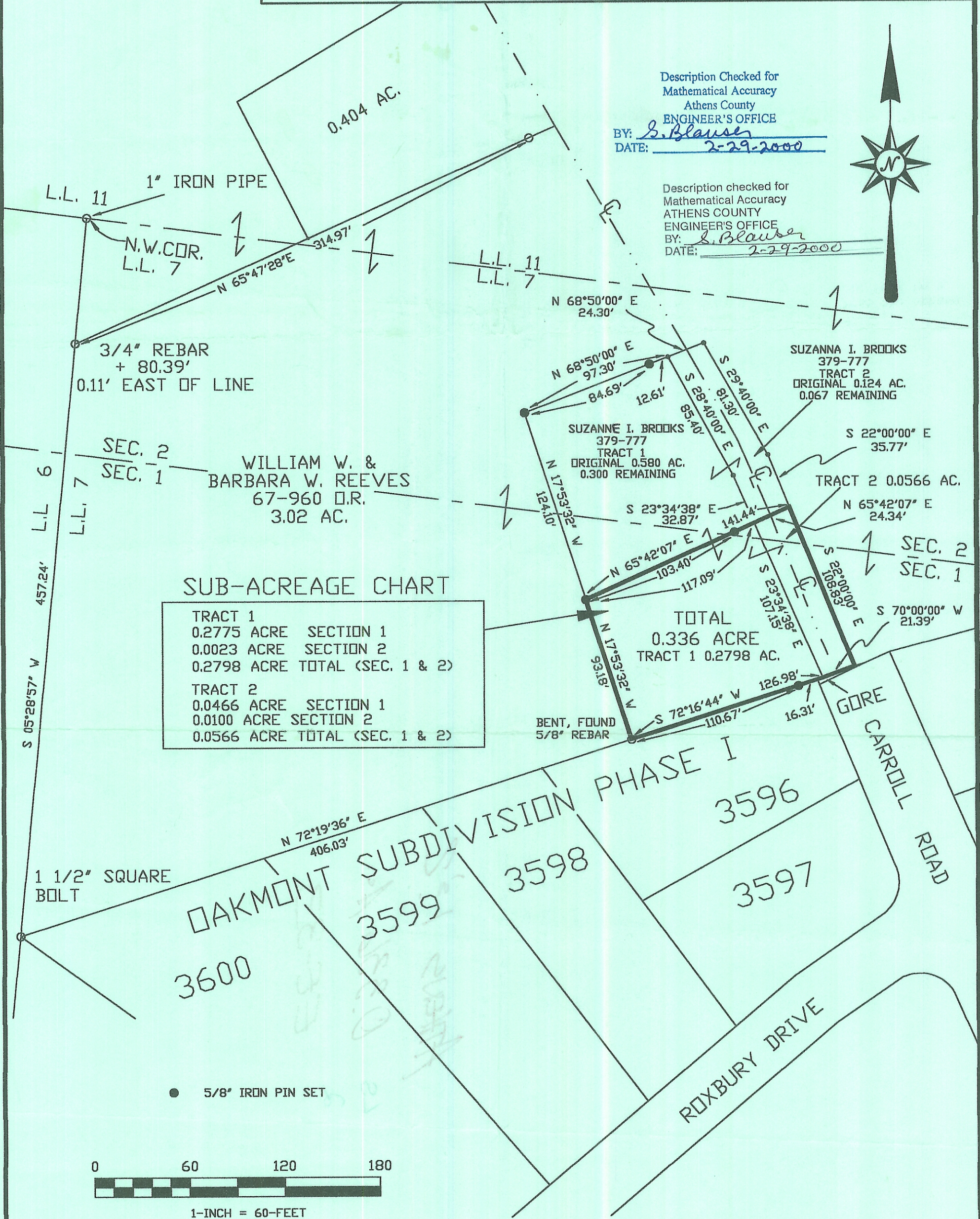


SOUTHEASTERN LAND SURVEYS

3428 PLEASANT HILL ROAD ATHENS, OHIO 45701 1-(740) 593-8701

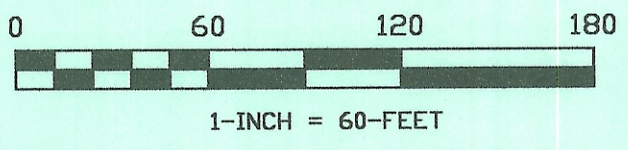
Description Checked for
Mathematical Accuracy
Athens County
ENGINEER'S OFFICE
BY: S. Blausen
DATE: 2-29-2000

Description checked for
Mathematical Accuracy
ATHENS COUNTY
ENGINEER'S OFFICE
BY: S. Blausen
DATE: 2-29-2000



SUB-ACREAGE CHART

TRACT 1	0.2775 ACRE	SECTION 1
	0.0023 ACRE	SECTION 2
	0.2798 ACRE	TOTAL (SEC. 1 & 2)
TRACT 2	0.0466 ACRE	SECTION 1
	0.0100 ACRE	SECTION 2
	0.0566 ACRE	TOTAL (SEC. 1 & 2)



PLAT OF 0.336 ACRE TOTAL SCALE 1" = 60'
 SURVEYED FOR GEORGE LEDBETTER DATE 02-14-2000
 SUBDIVISION N/A
 TOWNSHIP ATHENS SECTION 1 & 2 TOWN 9 RANGE 14
 CORPORATION ATHENS CITY COUNTY ATHENS STATE OHIO
 LEONARD F. SWOYER JR. REG. PROF. LAND SURVEYOR NO. 6765

