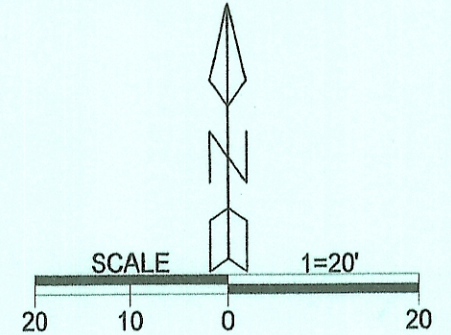
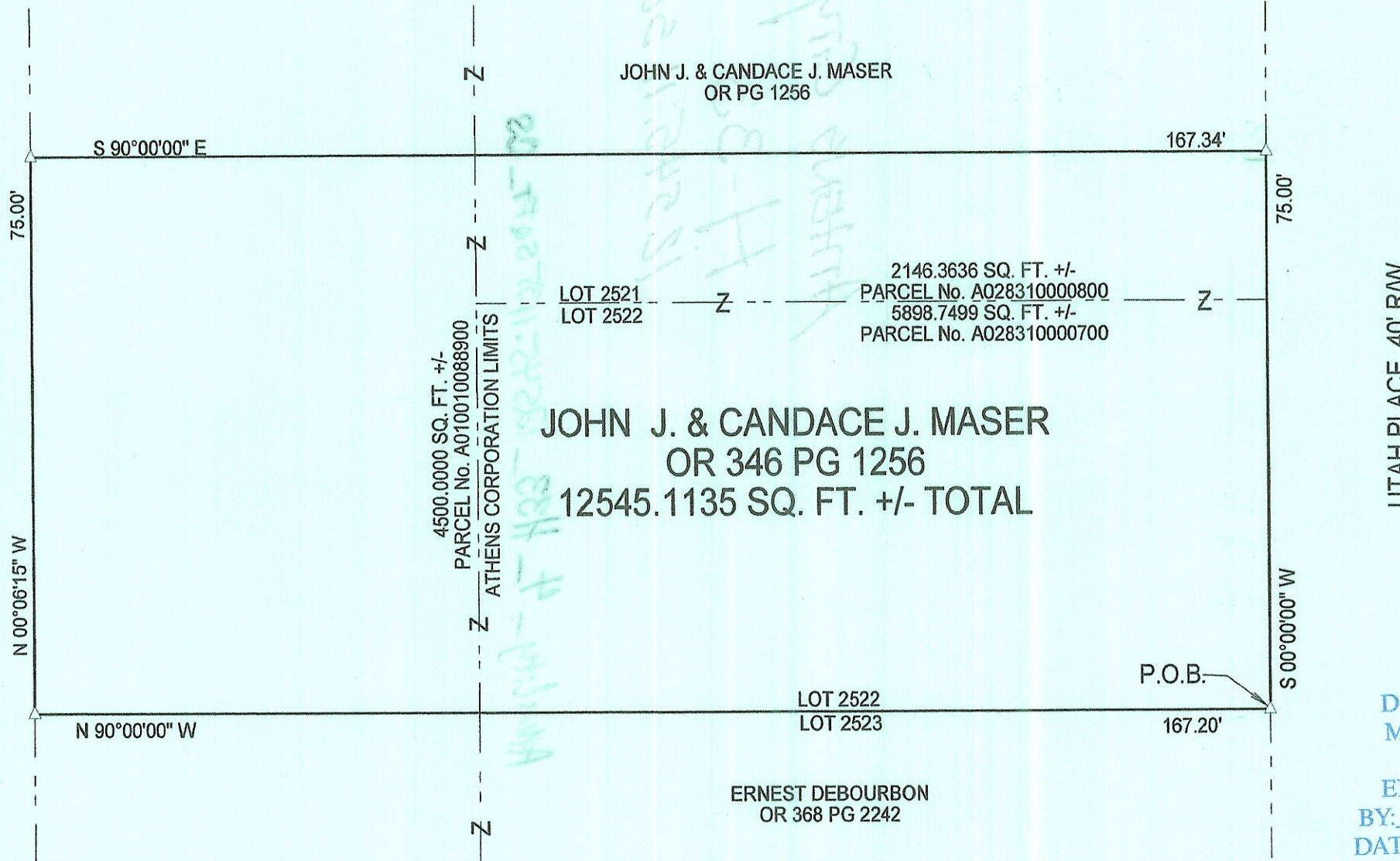


BEING LOT 2522 AND A PART OF LOT 2521 OF THE GRAND VIEW HIGHLAND ADDITION TO ATHENS AND A PART OF LEASE LOT 27, SECTION 4, TOWNSHIP-9, RANGE-14, ATHENS TOWNSHIP, ATHENS COUNTY, STATE OF OHIO.

BOARD OF ATHENS COUNTY COMMISSIONERS
DB 297 PG 595



LEGEND

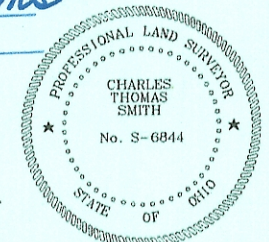
△	Iron pin set
▲	Iron pin found
•	Point

REFERENCES
Current Tax Plats
Previous surveys
Deeds: as noted
Aerial Photographs
U.S.G.S. Topo Maps
Plat Cabinet: Envelope 273A

Note: Bearings are assumed and are for the determination of angles only.

All iron pins set are 5/8"X30" rebar with plastic ID cap stamped "CTS-6844".

Description Checked for
Mathematical Accuracy
Athens County
ENGINEER'S OFFICE
BY: *C. Williams*
DATE: *6/6/13*



Surveyed and platted by
C. Thomas Smith
Ohio Professional Surveyor No 6844
P.O. Box 393
Racine, Ohio 45771
740-949-2524

Plat prepared from an actual survey made on the 3rd day of May, 2013 by,

C. Thomas Smith
C. Thomas Smith Ohio Professional Surveyor No. 6844