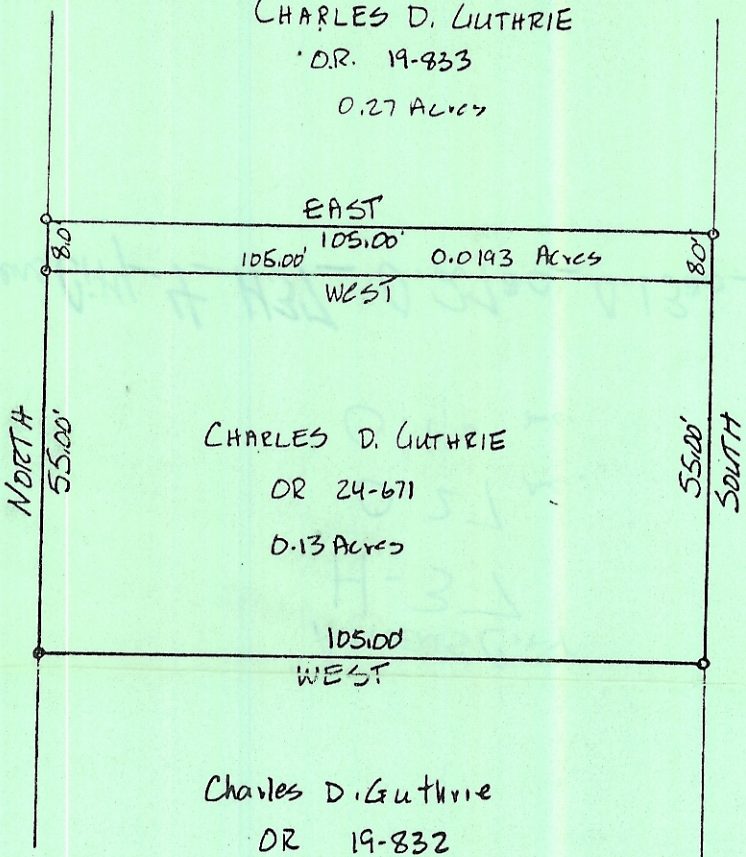


H-37

CHARLES D. LUTHRIE
D.R. 19-833
0.27 Acres

FARM LOT 25
(BANK ONE)



TOWNSEND PLACE (50')

o = IRON PIN SET

Charles D. Luthrie
D.R. 19-832
0.27 Acres

Plat of Survey of 2 PARCELS
SITUATED IN FARM LOT 26
IN THE CITY OF ATHENS, OHIO
FOR:

CHARLES D. LUTHRIE



Deborah W. Wirtz
REGISTERED SURVEYOR S-6535