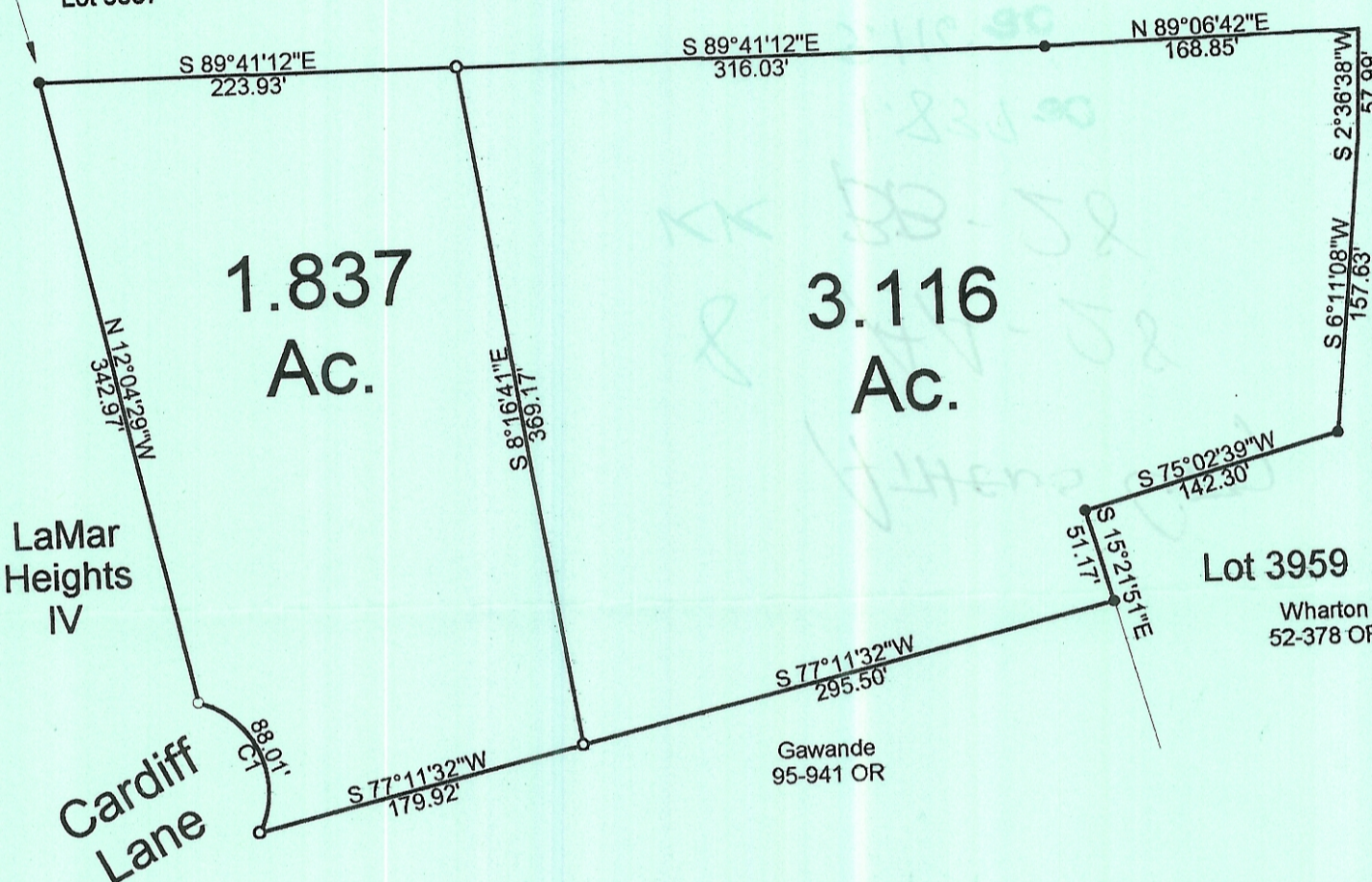




LaMar Heights III

S.W. corner of Lot 3667

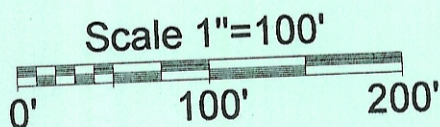


1.837
Ac.

3.116
Ac.

Curve	Delta Angle	Radius	Arc	Tangent	Chord	Chord Bearing
1	100°51'05.6"	50.000	88.010	60.495	77.080	N 22°48'52.0" W

- = Iron Pin Set
- = Iron Pin Found



Description checked for
Mathematical Accuracy
ATHENS COUNTY
ENGINEER'S OFFICE
BY: S. Blanks
DATE: 2-26-01

PLAT OF SURVEY OF TWO TRACTS

SURVEYED FOR SEAN JONES

SUBDIVISION _____

TOWNSHIP ATHENS SECTION _____ TOWN _____ RANGE _____

CORPORATION ATHENS COUNTY ATHENS STATE OHIO

SCALE 1" = 100' DATE FEB, 2001

Kenneth E. Highland
80 Fayette St.
Nelsonville, Ohio 45764
740-753-1264



Kenneth E. Highland S-7581