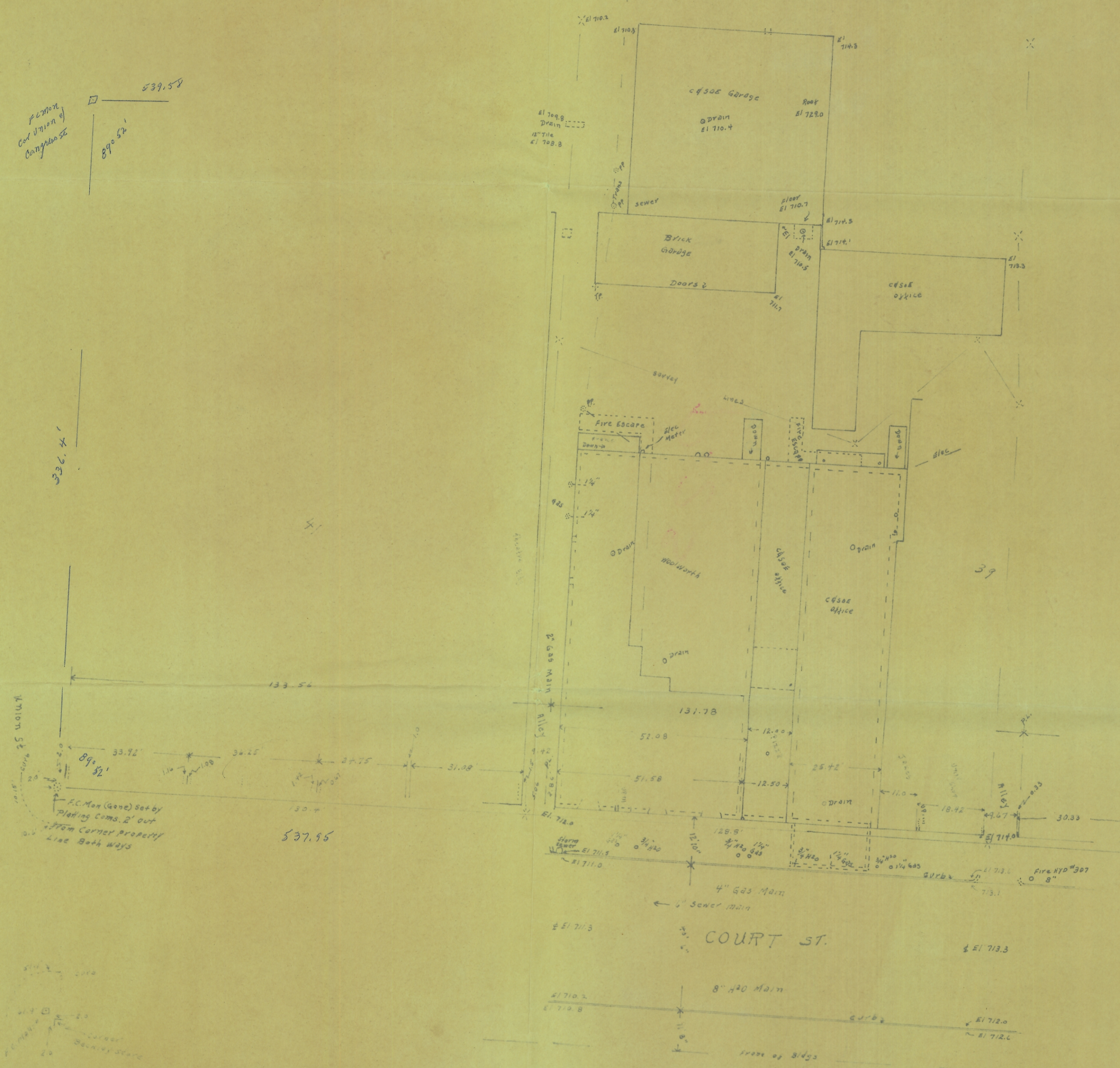


PC Mon
at the corner of
Washington St
87° 52'

PC Mon
at the corner of
Washington St
89° 51'



P 23

Scale 1" = 20'

Survey of West side of Court Street
between Washington & Union Sts
showing buildings & alleys, as they
are now located & created thereon.
"Street" in places 8'-0" in width
& City of Athens Plat Code Ord. 1897
as surveyed by Wm. T. G. 1897
Jas. L. Galvin
Reg. Sur. 1897



sheet #1
LOCATION MAP
Court Street Athens Ohio
Surveyed 7-31-1897
compiled by Jas. L. Galvin
Reg. Sur. 1897

Court Street

Athens Co.
Court House

Athens Co.
Court House

U.S.G.S.
Elev. 723.2

PC Mon
2' from corner
S.W. by Platting
Com. 1897

