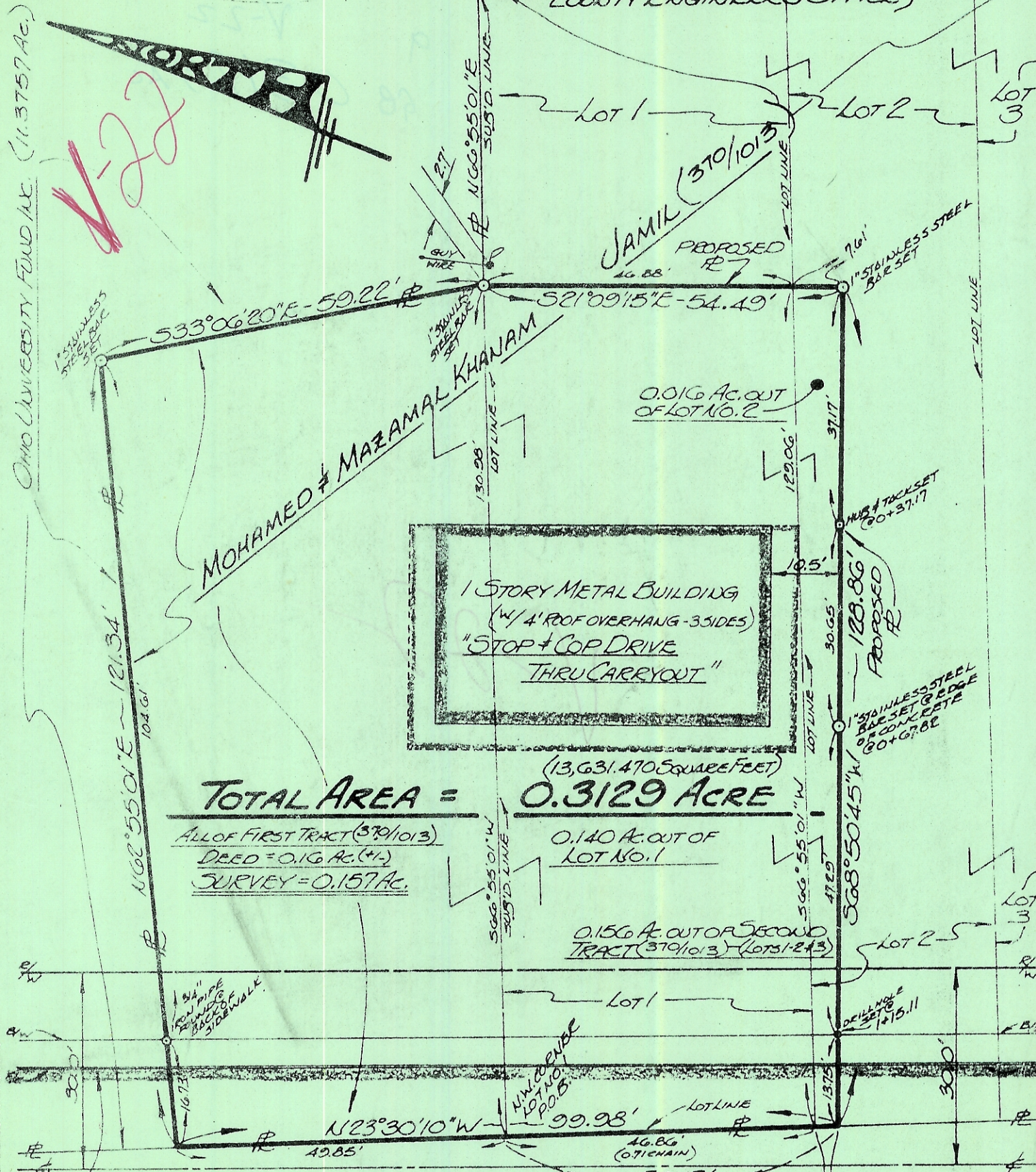


"COAT'S SUBDIVISION" (1875)
 (BOOK 5 - PAGE 3 IN THE ATHENS
 COUNTY ENGINEER'S OFFICE)

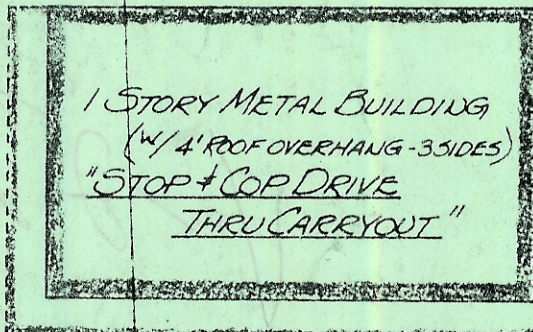


TOTAL AREA = 0.3129 ACRE

ALL OF FIRST TRACT (370/1013)
 DEED = 0.16 AC. (+/-)
 SURVEY = 0.157 AC.

0.140 AC. OUT OF
 LOT NO. 1

0.156 AC. OUT OF SECOND
 TRACT (370/1013) (LOTS 1-243)



RICHLAND AVENUE

Description checked for
 Mathematical Accuracy
 ATHENS COUNTY
 ENGINEER'S OFFICE

Archie W. Stutz

OHIO UNIVERSITY FUND INC. (11.3757 AC.)

V-22

JAMIL (370/1013)
 PROPOSED R7

MOHAMED & MAZAMAL KHANAM

N.W. CORNER
 LOT NO. 1
 P.O.B.

(31.5' ASPHALT PAVT)

"STAINLESS STEEL
 BAR SET @ EDGE
 OF CONCRETE
 20+G.82

MUS # TACK SET
 20+37.17

0.016 AC. OUT
 OF LOT NO. 2

1 1/4" PIPE
 FOUND @
 BACK OF
 SIDEWALK

30.0'
 16.73'

DELL HOLE
 SET @
 20+15.11

300'

50.15'

46.86'
 (0.71 CHAIN)

99.98'

49.85'

N 23° 30' 10" W

LOT 1

LOT 2

LOT 3

LOT 3

LOT 3

LOT 3

LOT 3

LOT 3

LOT 3

LOT 3

LOT 3

LOT 3

LOT 3

LOT 3

LOT 3

LOT 3

LOT 3

LOT 3

LOT 3

LOT 3

LOT 3

LOT 3

LOT 3

LOT 3

LOT 3

LOT 3

LOT 3

LOT 3

LOT 3

LOT 3

LOT 3

LOT 3

LOT 3

LOT 3

LOT 3

LOT 3

LOT 3

LOT 3

LOT 3

LOT 3

LOT 3

LOT 3

LOT 3

LOT 3

LOT 3

LOT 3

LOT 3

LOT 3

LOT 3

LOT 3

LOT 3

LOT 3

LOT 3

LOT 3

LOT 3

LOT 3

LOT 3

LOT 3

LOT 3

LOT 3

LOT 3

LOT 3

LOT 3

LOT 3

LOT 3

LOT 3

LOT 3

LOT 3

LOT 3

LOT 3

LOT 3

LOT 3

LOT 3

LOT 3

LOT 3

LOT 3

LOT 3

LOT 3

LOT 3

LOT 3

LOT 3

LOT 3

LOT 3

LOT 3

LOT 3

LOT 3

LOT 3

LOT 3