

NE. COR L.L. 14

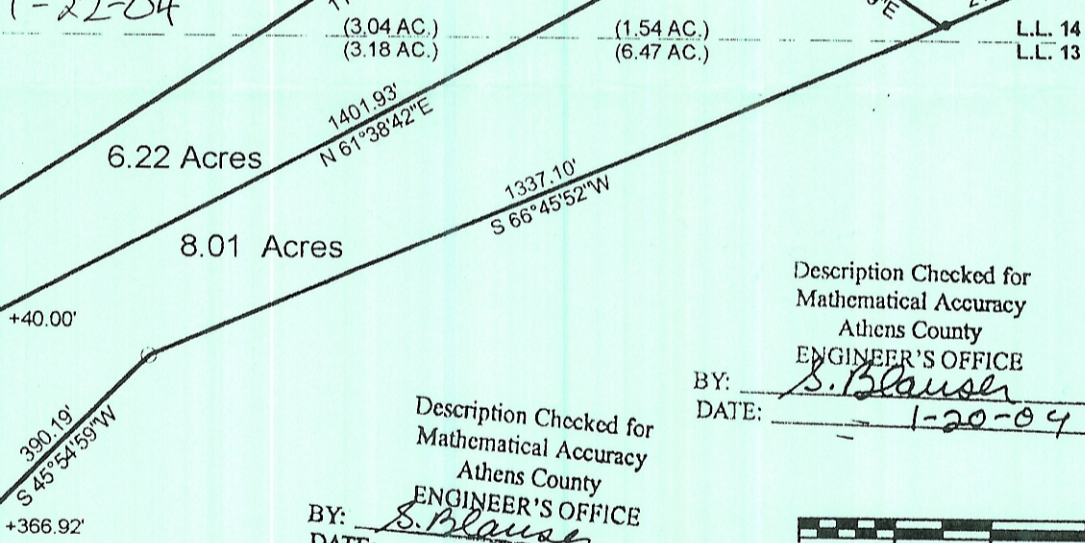
Line	Bearing	Distance
1	N 9°36'08"W	111.79'
2	N 3°41'21"E	109.01'
3	N 8°37'15"E	96.18'
4	N 3°54'15"W	79.68'
5	N 17°00'02"W	75.22'
6	N 50°16'40"E	40.94'

1613.42'  
S 0°00'00"W

OK TO TRANSFER  
Michael Ceper, R.S.  
ATHENS CITY-COUNTY HEALTH DEPT.  
1-22-04

COUNTY RD 89

L1 L2 L3 L4 L5 L6

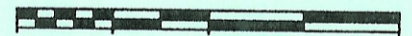


Description Checked for  
Mathematical Accuracy  
Athens County  
ENGINEER'S OFFICE

BY: S. Blausen  
DATE: 1-20-04

Description Checked for  
Mathematical Accuracy  
Athens County  
ENGINEER'S OFFICE

BY: S. Blausen  
DATE: 1-20-04



SCALE 1 INCH = 200 FEET  
● = IRON PIN SET  
○ = IRON PIN FD.  
ASSUMED BEARINGS  
TO BE USED TO DENOTE  
INTERIOR ANGLE ONLY

**SURVEY OF 2 TRACTS  
IN L.L. 13 AND L.L. 14 SECTION 2 AN 3 ,  
T.9 , R.14 , ATHENS TOWNSHIP  
ATHENS COUNTY, OHIO  
SURVEYED NOVEMBER 2003**

BY: John M. Branner  
**JOHN M. BRANNER P.S. 6805  
12500 N. PEACH RIDGE ROAD  
ATHENS, OHIO 45701  
(740) 592-5778**

